



**Weirdale Avenue, Whetstone, N20 0AH**

**Asking Price: £850,000**

*Freehold*

# Weirdale Avenue, Whetstone, N20 0AH

This immaculate FOUR bedroom house with extended kitchen & two reception rooms is well located for Brunswick Park Primary School and Russell Lane's array of shops.

Accommodation comprises of two spacious receptions rooms, modern fitted kitchen, downstairs bathroom. Upstairs there are three bedrooms with four piece family bathroom and master en-suite to the top floor. To the front there is parking for multiple cars with the facilities for an electric charging point. There is a South East facing garden with raised decking leading to low maintenance lawn and large office outbuilding benefiting from a power supply and currently used as office.

The house is well placed for highly regarded local schools including Brunswick Park Primary & East Barnet Secondary and is within walking distance to Oakleigh Park Overground Station which offers direct transport links into London's Kings Cross & Moorgate

- **CHAIN FREE FOUR BEDROOM HOUSE**
- **EXTENDED KITCHEN**
- **MODERN FITTINGS THROUGHOUT**
- **TWO RECEPTION ROOMS**
- **GARDEN OFFICE**
- **OFF STREET PARKING**
- **EN-SUITE TO MAIN BEDROOM**
- **THREE BATHROOMS**
- **RAISED DECKING AREA**
- **COUNCIL TAX BAND E**

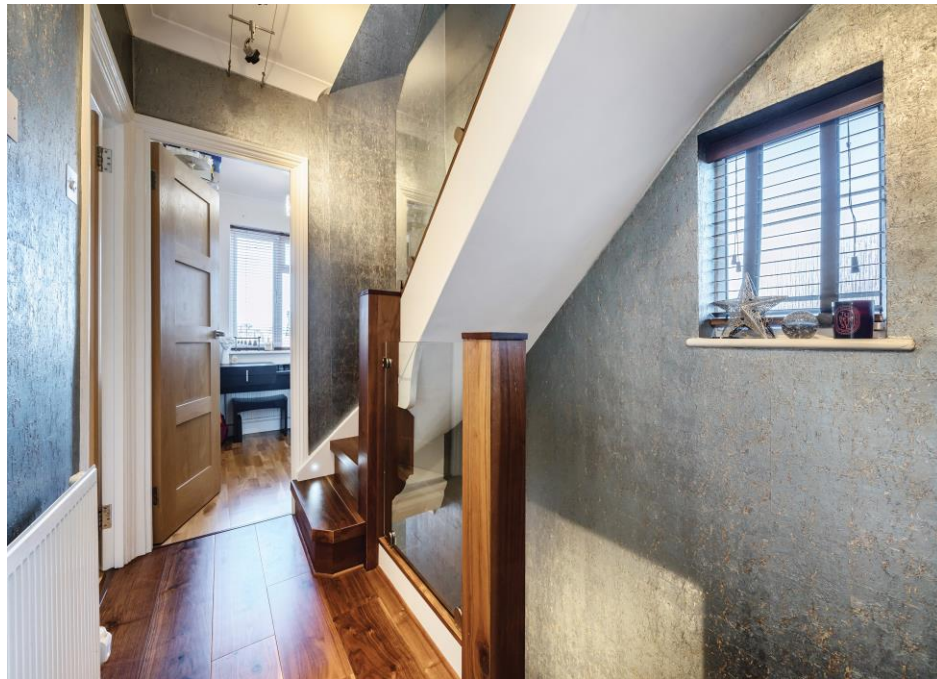


Illustration for identification purposes only, measurements are approximate, not to scale. floorplansUsketch.com © (ID1027278)











Score	Energy rating	Current	Potential
92+	A		
81-91	B		
69-80	C		80 C
55-68	D	57 D	
39-54	E		
21-38	F		
1-20	G		

**Disclaimer**

The agent has not checked any apparatus, fixtures or fittings or services and cannot verify they are in working order or fit for their purpose. Neither has the agent checked the legal documentation to verify the Freehold / Leasehold status of the property. Photographs are for illustration only and may depict items which are not for sale or included in the sale of the property.

**Hunters Whetstone**

99 Russell Lane  
 Whetstone  
 N20 0BA

T: 020 8368 7138

E: [info@hunters-whetstone.co.uk](mailto:info@hunters-whetstone.co.uk)

[www.hunters-whetstone.co.uk](http://www.hunters-whetstone.co.uk)