

HUNTERS®

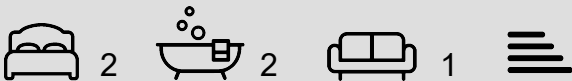
HERE TO GET *you* THERE



Victoria House, Leeds, West Yorkshire £1,400 Per Calendar Month

Council Tax: F

Tenure:



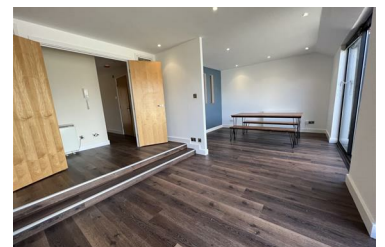
DEPOSIT ALTERNATIVE OPTION AVAILABLE OR DEPOSIT EQUIVALENT OF 5 WEEKS RENT

Victoria House is located on the Headrow in the heart of the city centre just across from the Art Gallery, Library and Town hall. The property is just 0.4 miles from the train station and 0.3 to Leeds University.

This top floor apartment benefits from having a large living/kitchen area with private roof terrace, two double bedrooms each with en-suites and a separate guest WC. The apartment is finished to a high standard.

The Light, The Core, Trinity and Victoria Gate are only a short walk from this development. There are plenty of surrounding restaurants, bars and coffee shops to take advantage of on your doorstep too so you are ideally located for city living.

- TOP FLOOR FURNISHED APARTMENT WITH ROOF TERRACE AND CITY VIEWS
- LARGE LIVING / KITCHEN AREA
- 0.4 MILES FROM TRAIN STATION, 0.3 MILES FROM LEEDS UNIVERSITY
- COUNCIL TAX BAND: F
- TWO BEDS / TWO BATHS
- DEPOSIT FREE OPTION AVAILABLE OR DEPOSIT EQUIVALENT OF 5 WEEKS RENT
- EPC: C



15 Park Place, Leeds, LS1 2SJ
Tel: 0113 218 2448 Email: leedslettings@hunters.com
<https://www.hunters.com>