

# HUNTERS<sup>®</sup>

HERE TO GET *you* THERE

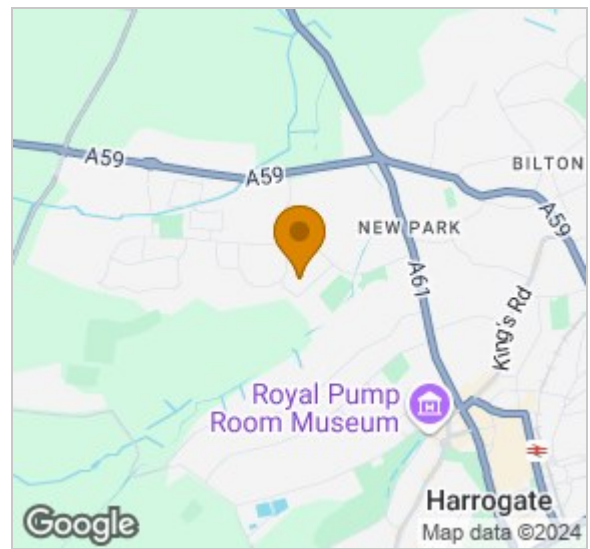


## Hartwith Close

Harrogate, HG3 2XW

Offers Over £90,000





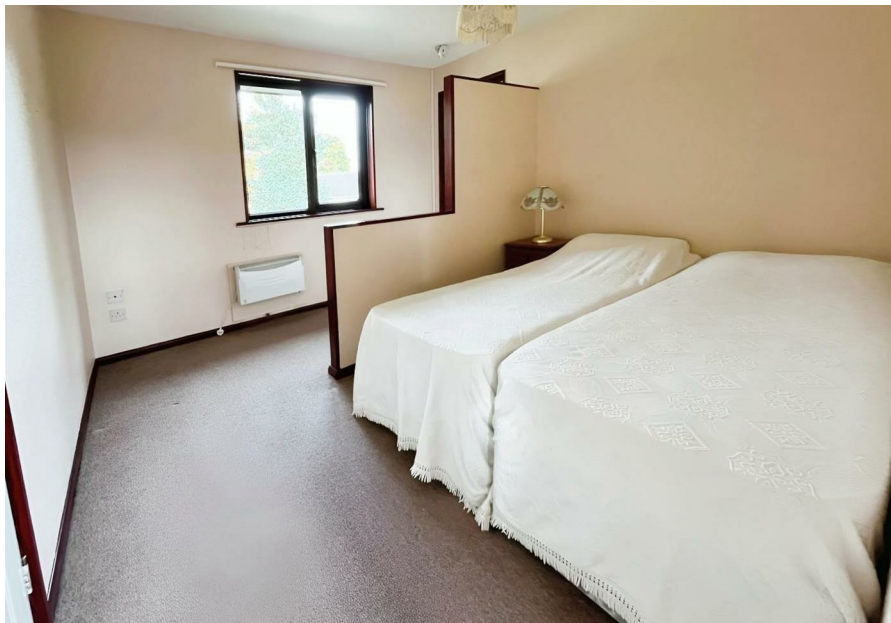
**ATTENTION INVESTORS & FIRST TIME BUYERS.** A spacious first floor studio apartment, with allocated parking space and attractive elevated views, situated in a highly sought-after location close to a range of local amenities on Jenny Field Drive and regular bus service into the town centre.

The accommodation has been well maintained by the current owner but would now benefit from some updating and comprises: Communal hallway and stairs to the first floor, private open plan living space to include, lounge area and sleeping area, kitchen, inner hallway with two storage cupboards and a sliding door opens to bathroom.

To the outside is a communal garden, allocated parking space and un-restricted on-street parking.

The property comes to the market with no onward chain and an early viewing comes highly recommended.

GROUND FLOOR  
316 sq.ft. (29.4 sq.m.) approx.



- ATTENTION INVESTORS & FIRST TIME BUYERS
- Well maintained but some updating required
- Close to amenities on Jenny Field Drive & regular bus service to town
- Attractive elevated views
- Council Tax Band A
- No onward chain
- Studio flat with lounge area and sleeping area
- Early viewing recommended
- Allocated parking space & un-restricted on-street parking

