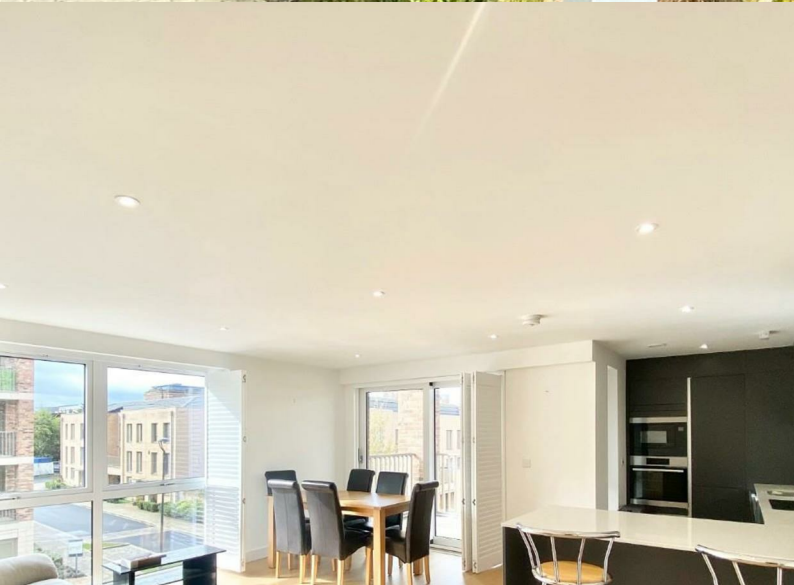


HUNTERS[®]

HERE TO GET *you* THERE

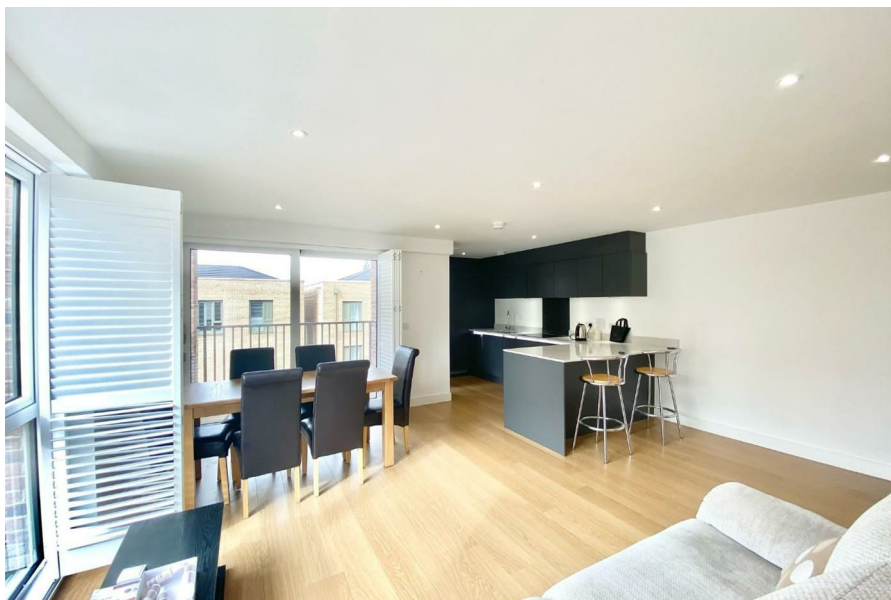


Joseph Terry Grove

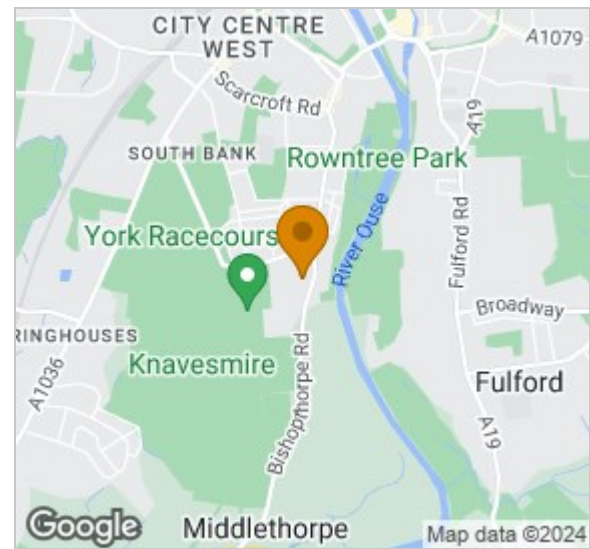
York, YO23 1FN

£1,400 Per Month





Area Map

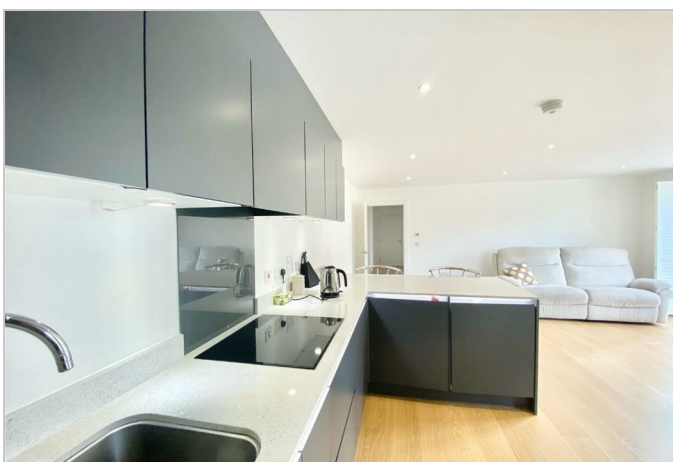


Energy Efficiency Rating		Current	Potential
Very energy efficient - lower running costs			
(92 plus) A		86	86
(81-91) B			
(69-80) C			
(55-68) D			
(39-54) E			
(21-38) F			
(1-20) G			
Not energy efficient - higher running costs			
England & Wales		EU Directive 2002/91/EC	

Environmental Impact (CO ₂) Rating		Current	Potential
Very environmentally friendly - lower CO ₂ emissions			
(92 plus) A			
(81-91) B			
(69-80) C			
(55-68) D			
(39-54) E			
(21-38) F			
(1-20) G			
Not environmentally friendly - higher CO ₂ emissions			
England & Wales		EU Directive 2002/91/EC	

- POPULAR JOSEPH TERRY GROVE COMPLEX
- TWO BEDROOM APARTMENT
- BALCONY
- OPEN PLAN LIVING/KITCHEN/DINING
- ONE ALLOCATED PARKING SPACE INCLUDED
- CALL HUNTERS TO ARRANGE A VIEWING
- COUNCIL TAX BAND E

- EN-SUITE BATHROOM
- OFFERED UNFURNISHED
- EPC RATING B



These particulars are intended to give a fair and reliable description of the property but no responsibility for any inaccuracy or error can be accepted and do not constitute an offer or contract. We have not tested any services or appliances (including central heating if fitted) referred to in these particulars and the purchasers are advised to satisfy themselves as to the working order and condition. If a property is unoccupied at any time there may be reconnection charges for any switched off/disconnected or drained services or appliances - All measurements are approximate. **THINKING OF SELLING OR LETTING?** If you are thinking of selling or letting your home or just curious to discover the value of your property, Hunters would be pleased to provide free, no obligation sales and marketing advice. Even if your home is outside the area covered by our local offices we can arrange a Market Appraisal through our national network of Hunters estate agents.