



01932 560777
johnsonandjones.co.uk

Highcross Place
Chertsey,

Johnson & Jones

41 Highcross Place Chertsey, KT16 9FN

Guide Price £425,000

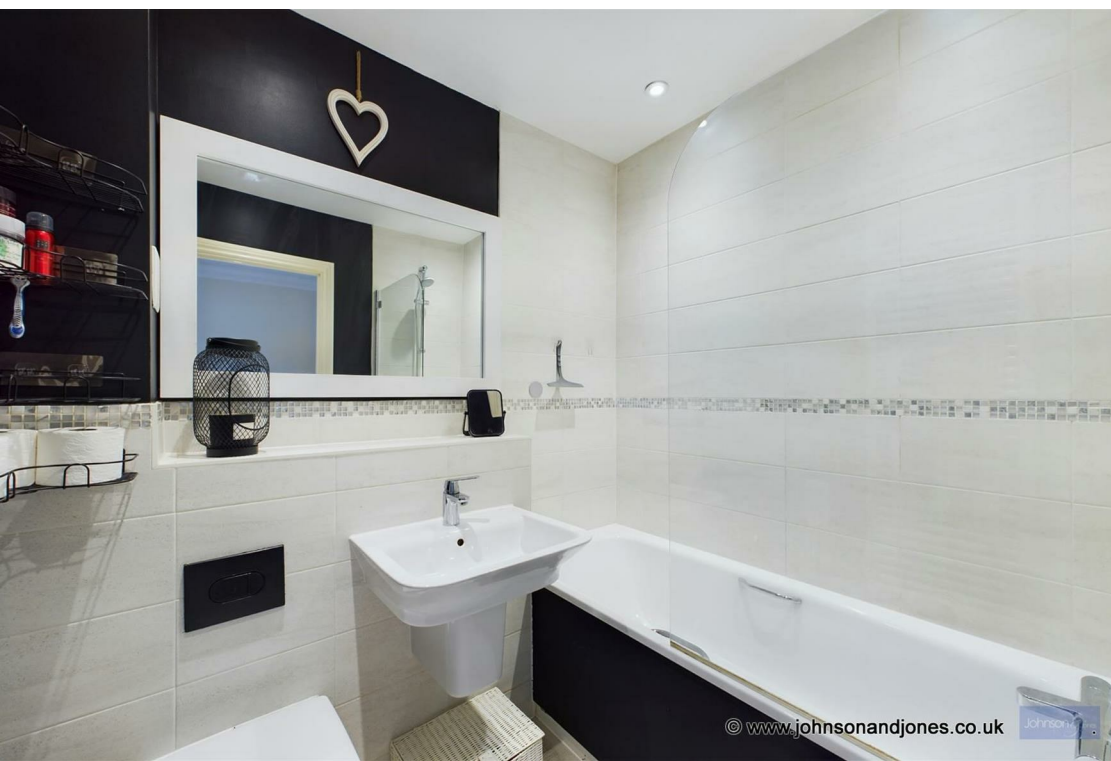
Built by Bewley Homes in 2015 we have this charming and contemporary home, located in a desirable cul-de-sac in the heart of Chertsey with the added benefit of no onward chain!

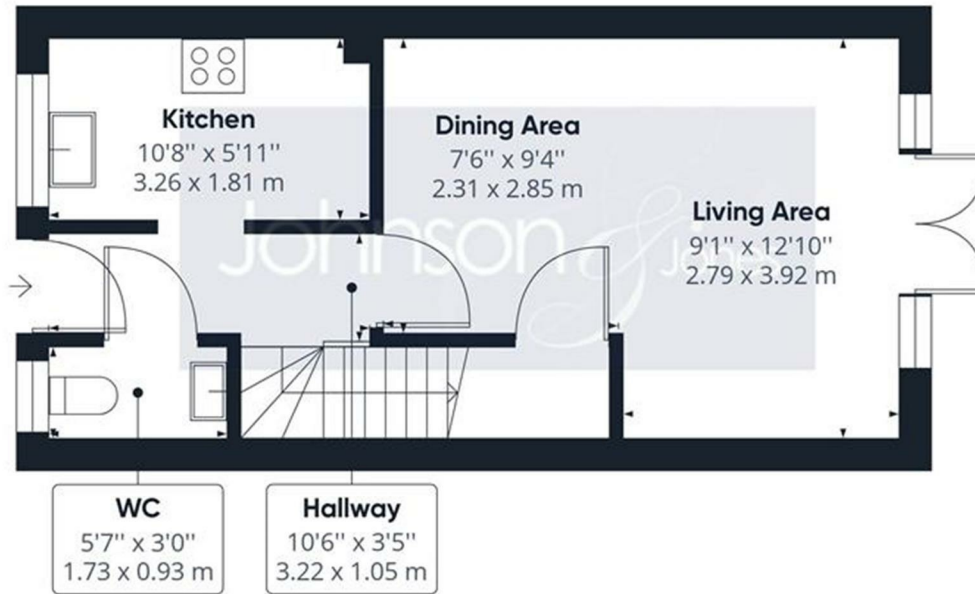
Entering the property we have a very spacious entrance hall providing access to the lounge, downstairs W/C and kitchen. Fitted to an impeccable standard the kitchen boasts an array of fitted cabinets along with an integrated fridge-freezer, oven, hob, and dishwasher. Leading through to the rear the open plan lounge/diner is a great size with contemporary wood flooring and patio doors out to the rear.

The first floor continues to impress with two generous double bedrooms. The master overlooking the rear and the second benefiting from built-in wardrobes. The bathroom is tastefully tiled with chrome fixtures and fittings and a shower above the bath.

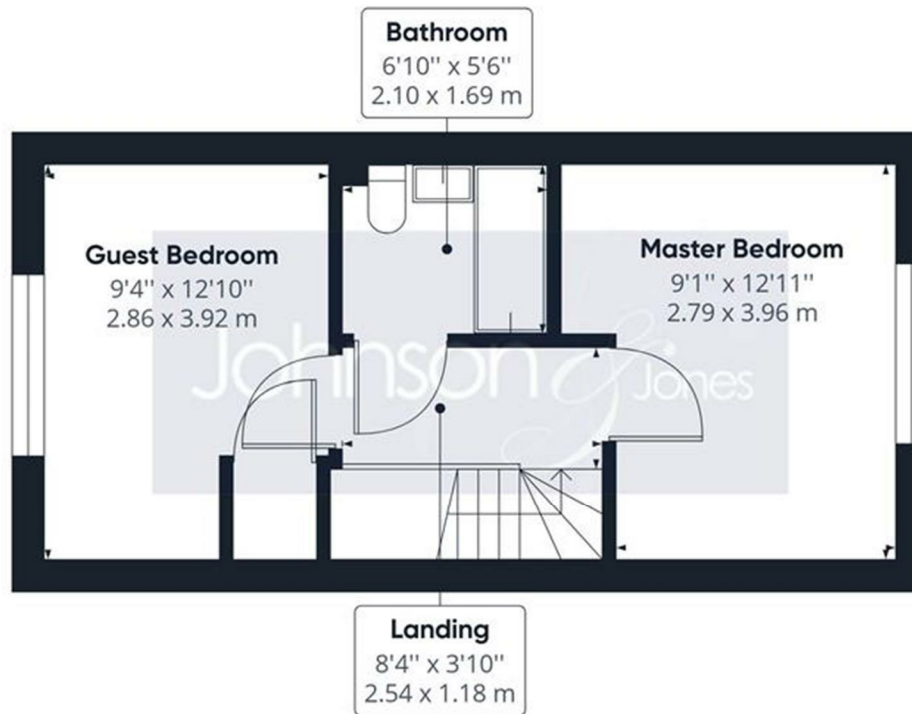
Externally we have immaculately kept front and rear gardens. The driveway is located to the side of the house and there is a gate providing rear access. Further benefits include gas central heating, double glazing, and no onward chain, allowing for a very quick purchase to be possible!







Floor 0



Floor 1

Approximate total area⁽¹⁾

663.89 ft²

61.68 m²

(1) Excluding balconies and terraces

While every attempt has been made to ensure accuracy, all measurements are approximate, not to scale. This floor plan is for illustrative purposes only.



10 London Street, Chertsey
Surrey, KT16 8AA

Johnson & Jones