



01932 560777
johnsonandjones.co.uk

Meadow View
Chertsey, Surrey

Johnson & Jones

6 Meadow View Chertsey, KT16 8QH

Guide Price £599,950

A beautifully presented and extremely spacious mid terrace town house located in a smart, modern development with good access to Chertsey town centre and the M25, moments away from the River Thames and Chertsey Meads.

Accommodation on the ground floor comprises a large family room/fourth bedroom overlooking the garden, which would make an ideal home office. A utility room with garden access, and separate cloakroom. On the first floor we have a spacious, L-shaped living/dining room with a run of three large windows keeping it beautifully bright. To the front we have a large kitchen/diner fitted out to a great standard with an array of integral appliances. Leading up the stairs from here to the top floor we have a lovely master suite with built in wardrobes and an en-suite shower room, two further bedrooms and a beautifully fitted three piece family bathroom.

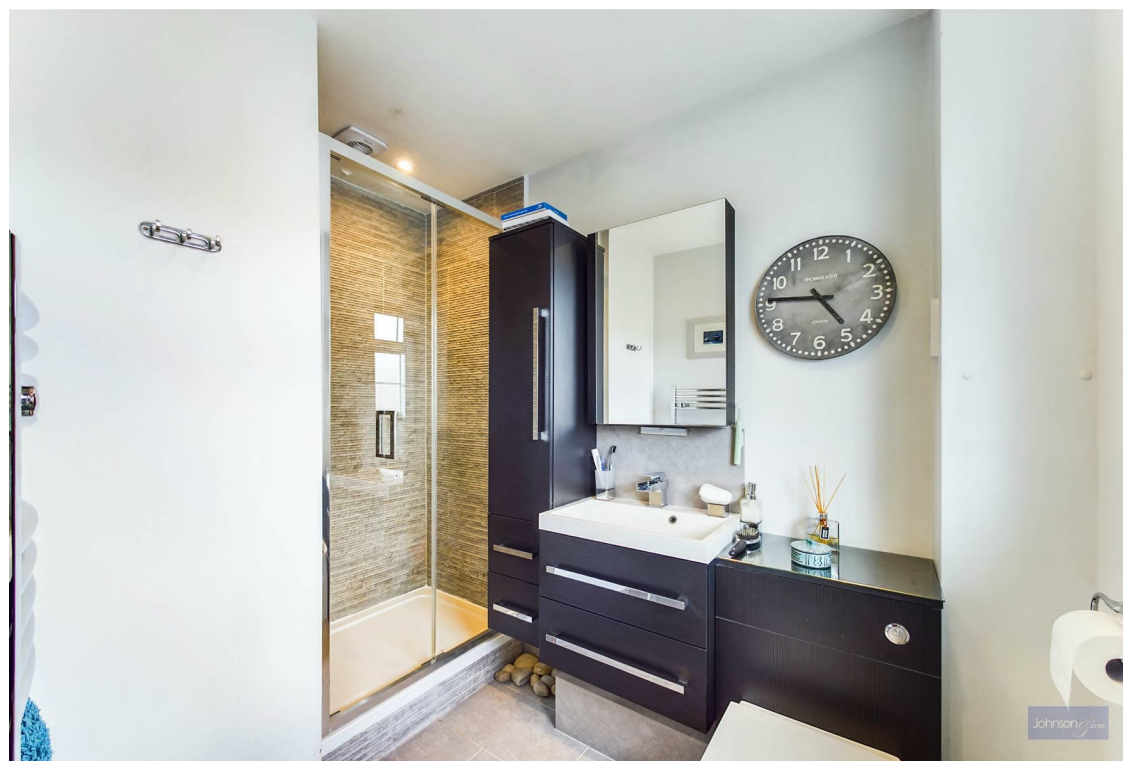
Outside there is a good size low maintenance rear garden which has been landscaped to the highest of standards, boasting a paved entertaining space with a glazed pergola for all year round enjoyment, mature planting to the borders and a summer house to the end. There is ample off street parking to the front and an integral garage. With an abundance of storage throughout the property, immaculate decor and an incredibly desirable location, early internal inspections are highly recommended to avoid missing out.

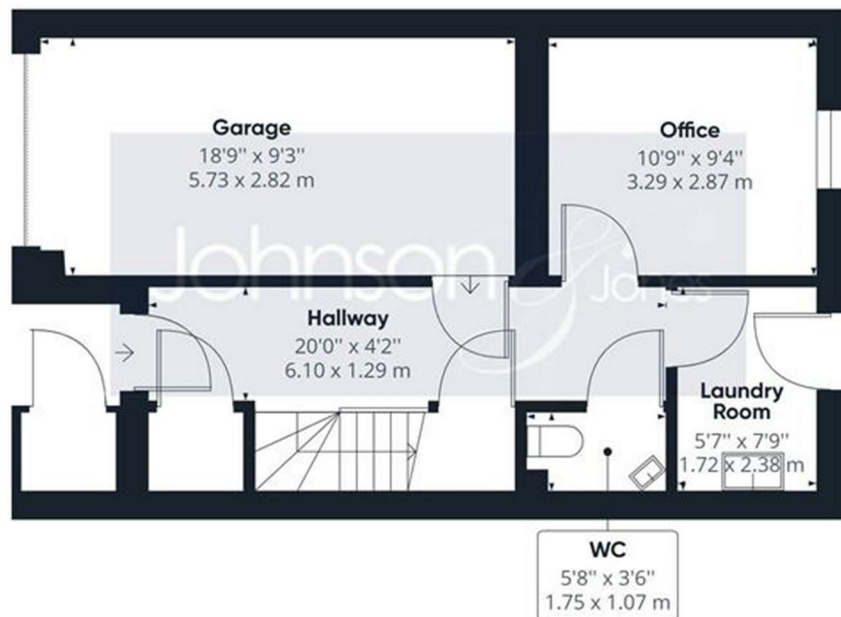
Tenure: Freehold

Council Tax: Band F: 3135.27



Disclaimer: Johnson and Jones Estate Agents cannot verify that the equipment, apparatus, fittings or services within this property are in working order, as they have not tested the relevant items. The buyer is advised to obtain verification from the solicitor dealing with the conveyancing or survey.

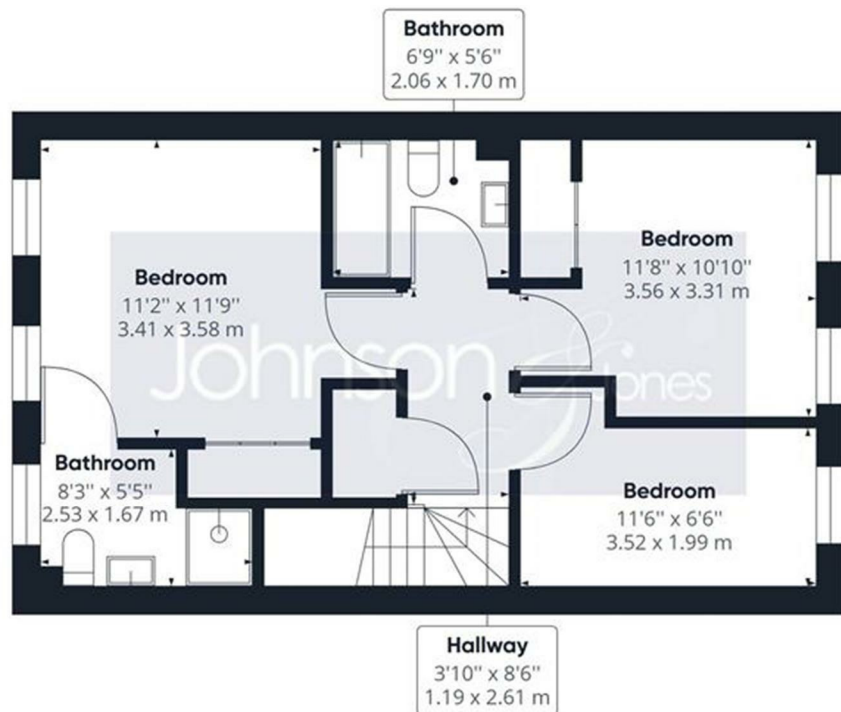




Floor 0



Floor 1



Floor 2

Approximate total area⁽¹⁾

1503.73 ft²

139.70 m²

(1) Excluding balconies and terraces

While every attempt has been made to ensure accuracy, all measurements are approximate, not to scale. This floor plan is for illustrative purposes only.



10 London Street. Chertsey
Surrey. KT16 8AA

Johnson & Jones