



01932 560777
johnsonandjones.co.uk

Ruxbury Road
Chertsey, Surrey

Johnson & Jones

Log House Ruxbury Road Chertsey, KT16 9NH

£700,000

Measuring circa 3.26 Acres with an access road leading form Ruxbury Road at the bottom of St Ann's Hill in Chertsey, we have this fantastic opportunity to purchase a log cabin with a vast amount of land.

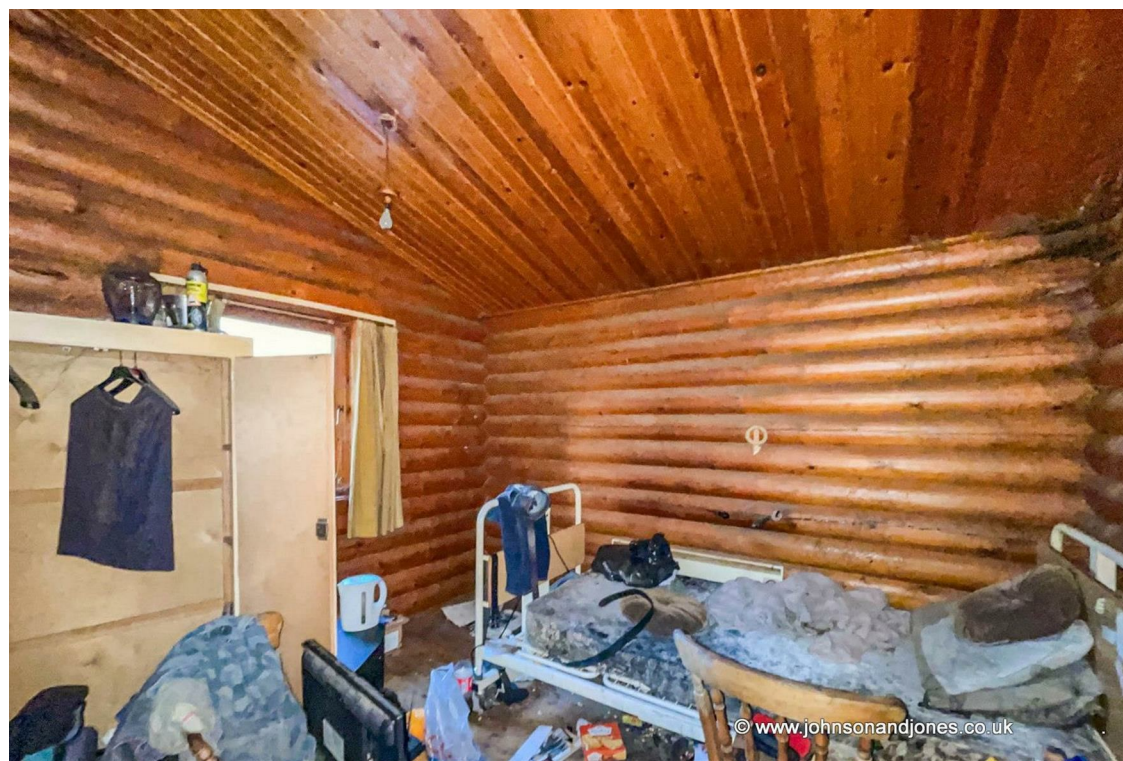
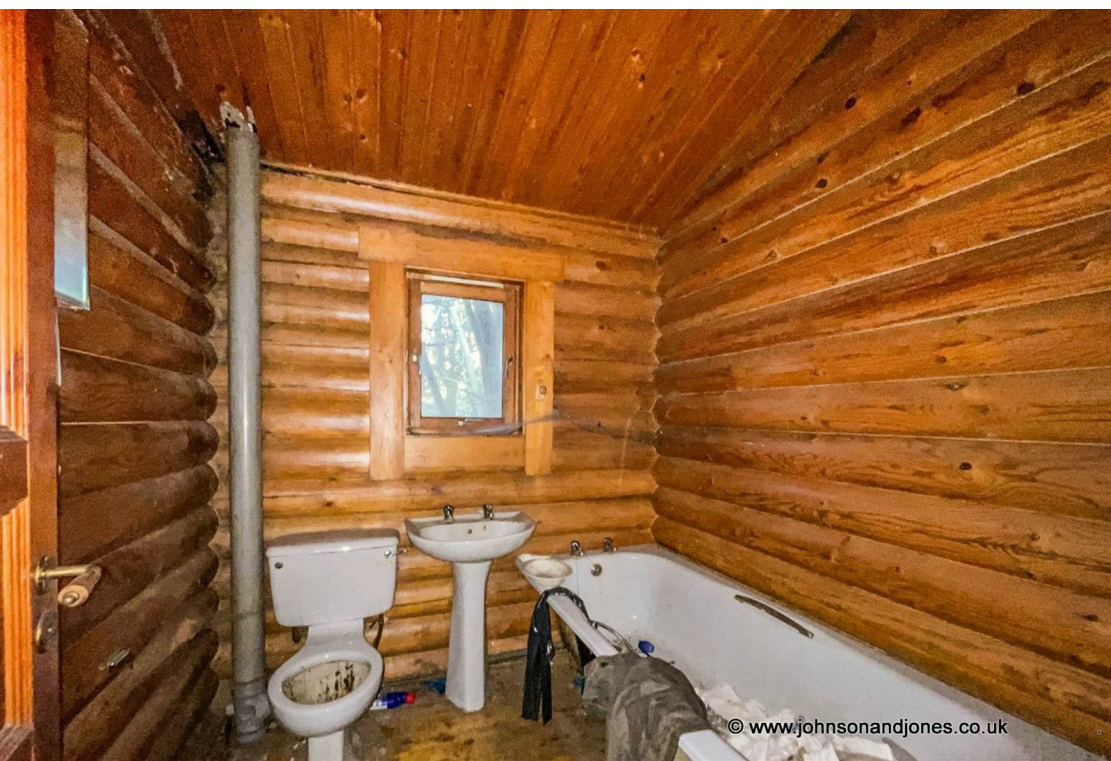
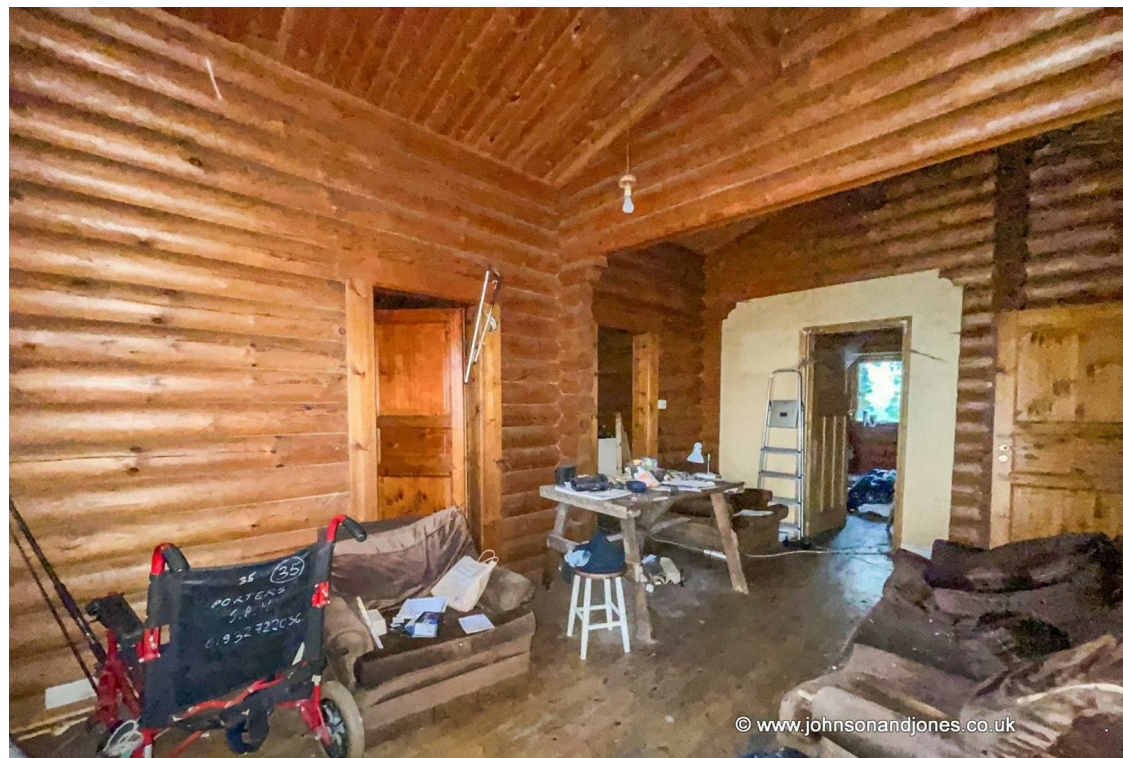
The land had been used by the previous occupier as a Christmas tree farm, however it has not been farmed for many years now. The cabin will require internal renovation but is in sound condition with what appears to be a new roof in recent years. The services are currently disconnected, but there is plumbing and electrics.

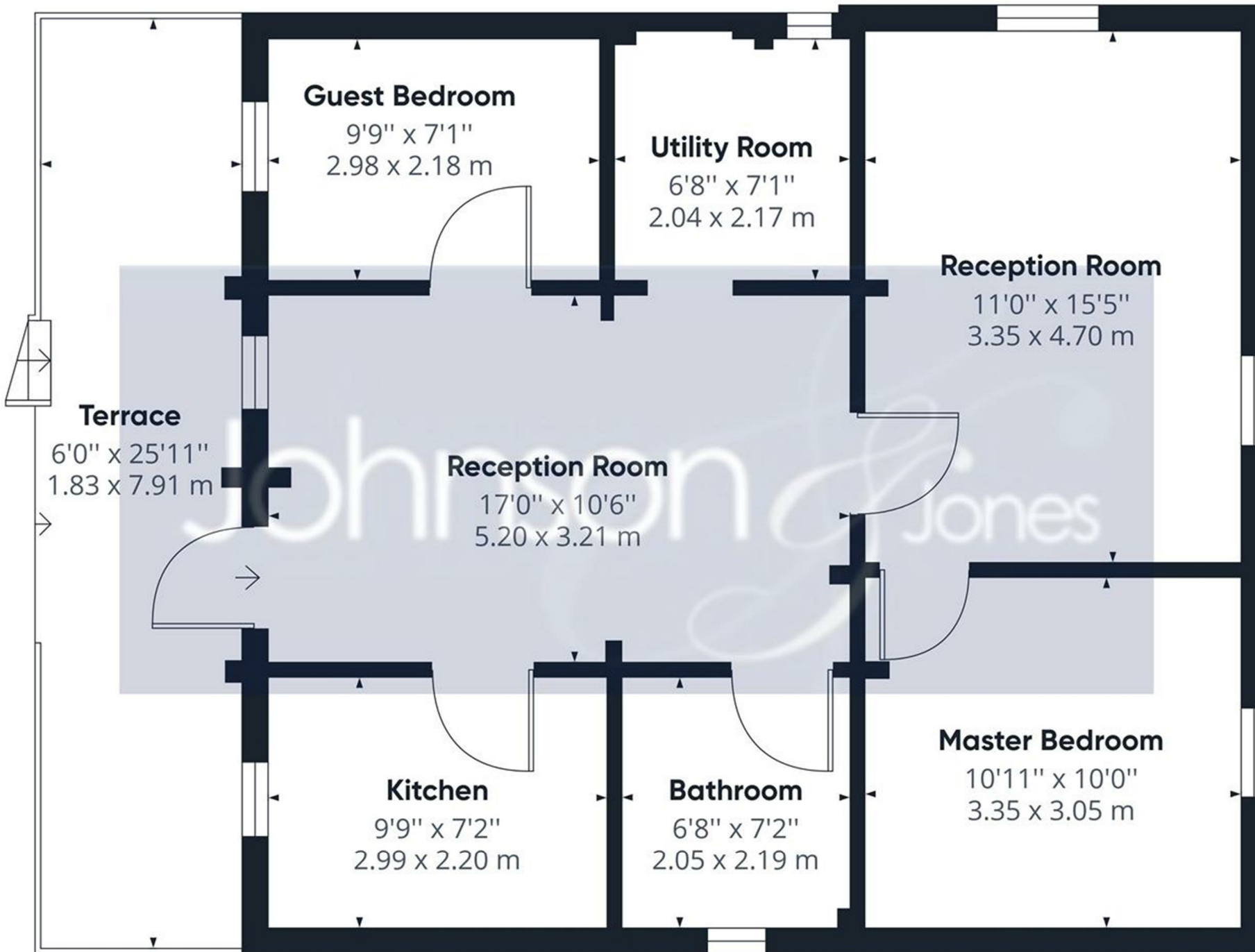
At present there is a planning constraint stating: planning permission RU.88/0060 which restricts the occupation of the dwelling to a person solely or mainly employed, or last employed, in the locality in agriculture, or in forestry, or a dependent of such a person residing with him or her, or a widow or widower of such a person.

The property is being sold as is and it would be to down to the new owners to seek any changes to this planning. if they so wish.

Viewing strictly by appointment only.







Approximate total area⁽¹⁾

703.97 ft²

65.40 m²

(1) Excluding balconies and terraces

While every attempt has been made to ensure accuracy, all measurements are approximate, not to scale. This floor plan is for illustrative purposes only.



Circa 3.26 Acres