

FOR SALE

Thurlow Terrace, Kentish Town, NW5

PRICE £735,000.00

OliverTown | 189 Kentish Town Road | Kentish Town | London | NW5 2JU Tel: 0207 284 1222 Email: hello@oliverstown.com



2 Bedroom



Kitchen



1 Reception



1 Bathroom



Roof Terrace



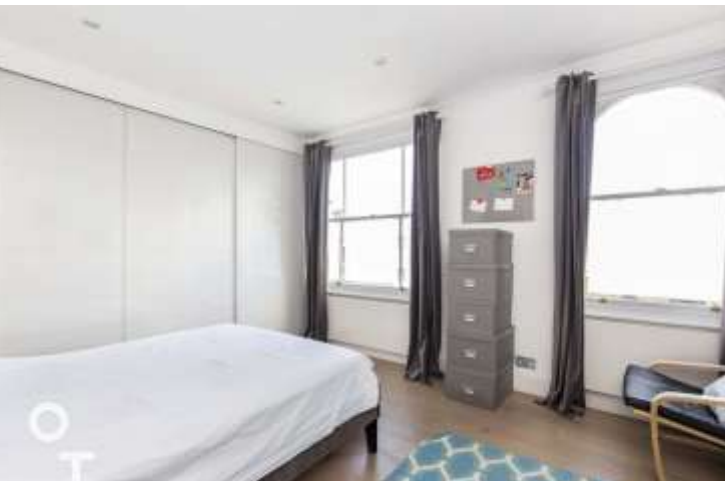
Parking Permit

Thurlow Terrace, Kentish Town, NW5

PRICE £735,000.00

A beautifully presented and generously proportioned two-bedroom duplex apartment, arranged over the first and second floors of an attractive period building. The property features a stylish contemporary kitchen with modern fitted units, a sleek bathroom/WC, and the added luxury of a delightful private roof terrace.

Superbly located within easy reach of a wide selection of shops, cafés, and restaurants, the apartment also offers excellent transport links via Chalk Farm and Kentish Town West stations. Offered chain-free, this is a must-see home&viewings are highly recommended.







735,000.00



Leasehold



London Borough of Camden



Council Tax Band



EPC Band



2 Bedroom



1 Bathroom



1 Reception



Roof Terrace



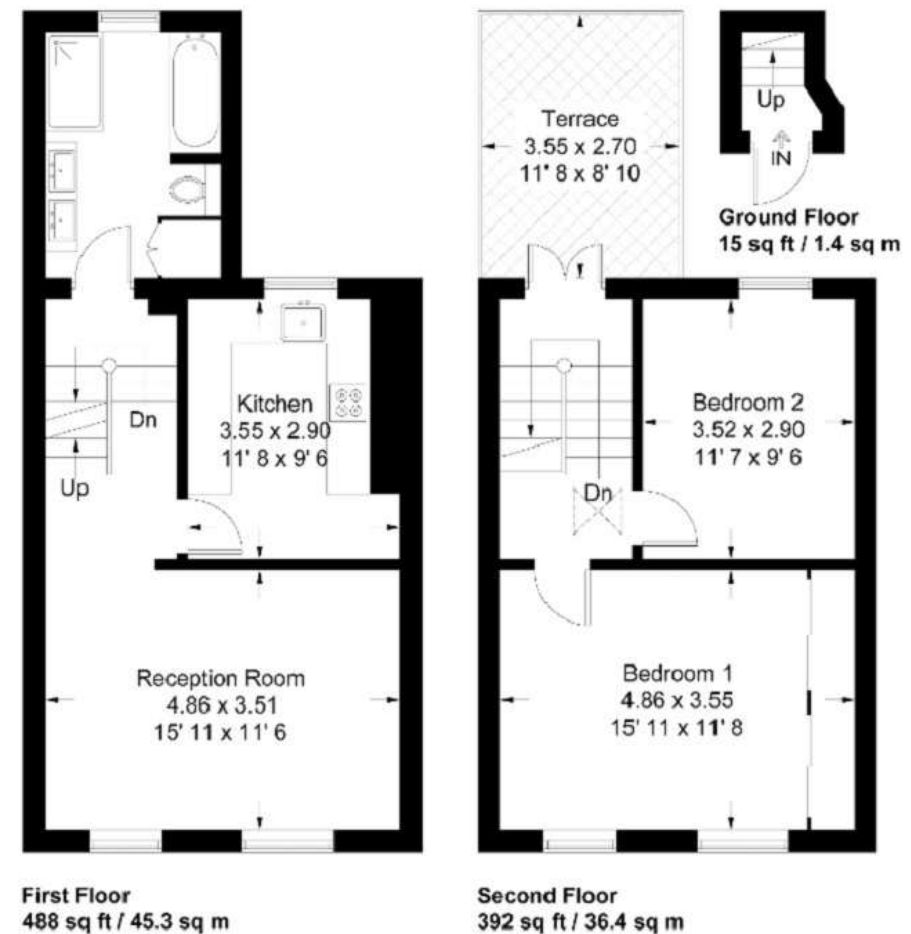
Parking Permit

KENTISH TOWN | 189 Kentish Town Rd | London | NW5 2JU | T: 020 7284 1222 | hello@oliverstown.com

ASSOCIATED MAYFAIR | 121 Park Lane | London | W1K 7AG | T: 020 3368 8602 | hello@oliverstown.com

Thurlow Terrace

Approximate Gross Internal Area = 895 sq ft / 83.1 sq m



Not to scale, for guidance only and must not be relied upon as a statement of fact
All measurements and areas are approximate only and have been prepared in
accordance with the current edition of the RICS Code of Measuring Practice

Whilst every attempt has been made to ensure the accuracy of the floorplan contained here, measurements
of doors, windows, rooms and any other items are approximate and no responsibility is taken for any error,
omission or mis-statement. This plan is for illustrative purposes only and should be used as such by any
prospective purchaser. The services, systems and appliances shown have not been tested and no guarantee
as to their operability or efficiency can be given.