

FOR SALE

## Patshull Road, Kentish Town NW5

ASKING PRICE £2,750,000.00

OliverTown | 189 Kentish Town Road | Kentish Town | London | NW5 2JU Tel: 0207 284 1222 Email: [hello@oliverstown.com](mailto:hello@oliverstown.com)



4 Bedroom



Kitchen



1 Reception



3 Bathroom



Garden



Parking Permit

# Patshull Road, Kentish Town NW5

ASKING PRICE £2,750,000.00

Situated on the highly sought-after Patshull Road in NW5, this exceptional four-bedroom, three-bathroom semi-detached house offers an exquisite blend of period charm and contemporary luxury. Available for sale at £2,750,000, this freehold property has been fully renovated to a high specification, presenting a stunning family home in a prime residential location.

The property features elegant bay windows and retains original period features, complemented by engineered timber flooring throughout. The bespoke kitchen, complete with marble worktops, seamlessly integrates with the open-plan living space, creating a perfect environment for both entertaining and everyday living.

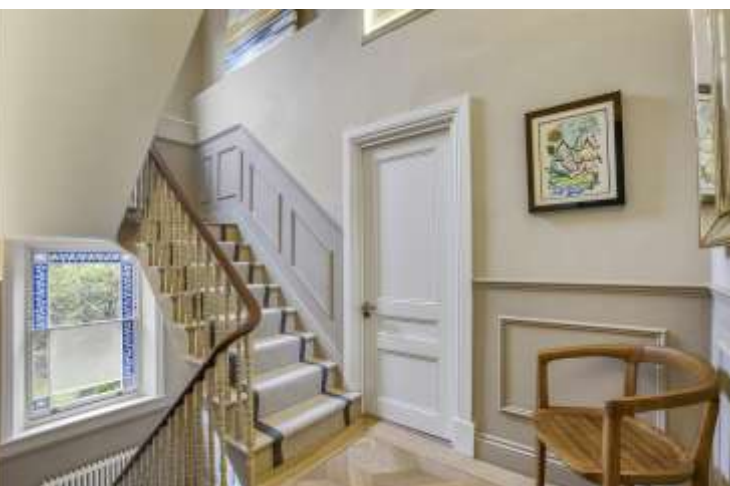
Externally, the front and rear gardens have been thoughtfully landscaped, providing generous outdoor space for relaxation and recreation. The exterior has also been recently renovated, ensuring excellent curb appeal and durability.

Located within close proximity to reputable local schools and a range of amenities, this property combines convenience with an enviable lifestyle. With an EPC rating of E, this beautifully appointed home represents a rare opportunity to acquire a distinguished residence on one of NW5's premier streets. Viewings are highly recommended.

Bio from the sellers:









2,750,000.00



4 Bedroom



Freehold



3 Bathroom



London Borough of Camden



1 Reception



Council Tax Band



Garden



EPC Band



Parking Permit

Patshull Road, NW5

Approximate Gross Internal Area = 229.29 m<sup>2</sup> / 2468.07 ft<sup>2</sup>



Ground Floor

Estimated Area with Height Restrictions: 48.26 m<sup>2</sup> / 519.47 ft<sup>2</sup>

First Floor

Second Floor

Third Floor

Loft

Brought to you by:

OLIVERS TOWN

This plan is for layout guidance only and is not to scale unless stated. All dimensions, including windows, doors, fittings, and the total area, are approximate measurements. Produced by a



Certified  
Property  
Measurer

KENTISH TOWN | 189 Kentish Town Rd | London | NW5 2JU | T: 020 7284 1222 | hello@oliverstown.com

ASSOCIATED MAYFAIR | 121 Park Lane | London | W1K 7AG | T: 020 3368 8602 | hello@oliverstown.com

