

FOR SALE

Malden Crescent, Chalk Farm NW1

PRICE £610,000.00

OliverTown | 189 Kentish Town Road | Kentish Town | London | NW5 2JU Tel: 0207 284 1222 Email: hello@oliverstown.com



3 Bedroom



Kitchen



1 Reception



1 Bathroom



Balcony



Parking Permit

Malden Crescent, Chalk Farm NW1

PRICE £610,000.00

Situated in the sought-after Malden Crescent, Chalk Farm NW1, this impressive second-floor apartment offers a fantastic opportunity for those seeking a stylish urban lifestyle. This leasehold property boasts a spacious floor area of 861 square feet, featuring 3 bedrooms, 1 bathroom, and a generous reception room perfect for entertaining guests.

The property is elegantly designed with a modern touch, offering a turnkey solution for the new owners. Enjoy the convenience of a purpose-built apartment with a large balcony, providing a peaceful outdoor space to relax and unwind. The prime location adds to the allure, with easy access to local amenities, transport links, and vibrant city life.

With an EPC rating of D, this property is not only aesthetically pleasing but also energy efficient. Priced at £610,000, this apartment presents a fantastic opportunity to own a spacious and well-appointed home in the heart of Chalk Farm. Don't miss out on the chance to make this urban oasis your own.







610,000.00



3 Bedroom



Leasehold



1 Bathroom



London Borough of Camden



1 Reception



Council Tax Band



Balcony



EPC Band



Parking Permit



KENTISH TOWN | 189 Kentish Town Rd | London | NW5 2JU | T: 020 7284 1222 | hello@oliverstown.com
ASSOCIATED MAYFAIR | 121 Park Lane | London | W1K 7AG | T: 020 3368 8602 | hello@oliverstown.com

Malden Crescent, NW1

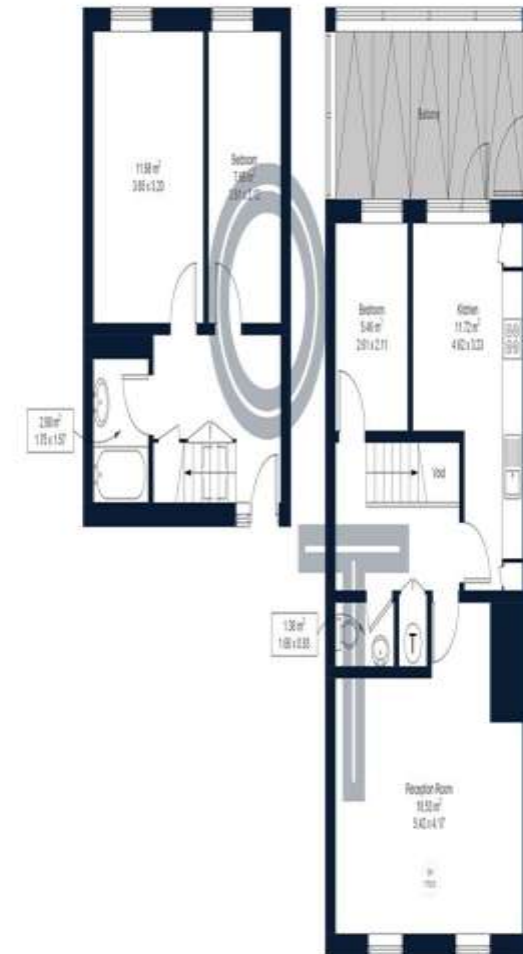
Approximate Gross Internal Area = 79.98 m² / 860.89 ft²



Second Floor

Third Floor

Estimated Area with
Height Restrictions:
0.48 m² / 5.16 ft²



Brought to you by:

OLIVERS TOWN

This plan is for layout guidance only and is not to scale unless stated. All dimensions, including windows, doors, fittings, and the total area, are approximate measurements. Produced by a

