

FOR SALE

Queen's Crescent, Kentish Town NW5

PRICE £510,000.00



1 Bedroom



Kitchen



1 Reception



1 Bathroom



Roof Terrace



Parking Permit

Queen's Crescent, Kentish Town NW5

PRICE £510,000.00

This contemporary one-bedroom apartment occupies the first-floor position of this end of the terraced building on Queen's Crescent.

The space has been exquisitely reconfigured and refurbished by the current owner with exceptional attention to detail, making use of a refined palette of neutral materials, with use of exposed brickwork, and wooden floors, complementing the high ceilings.

An open-plan reception and kitchen sit to the front of the plan, acting as a superb entertaining space, light-filled with dual-aspect windows overlooking Queen's Crescent. The room is set out with a zonal feeling, with a distinctive reception area, kitchen, and dining areas. The kitchen is designed in two parts with mid-blue cabinetry, a solid wood preparation surface contrasted by a white composite surrounding the butler sink.

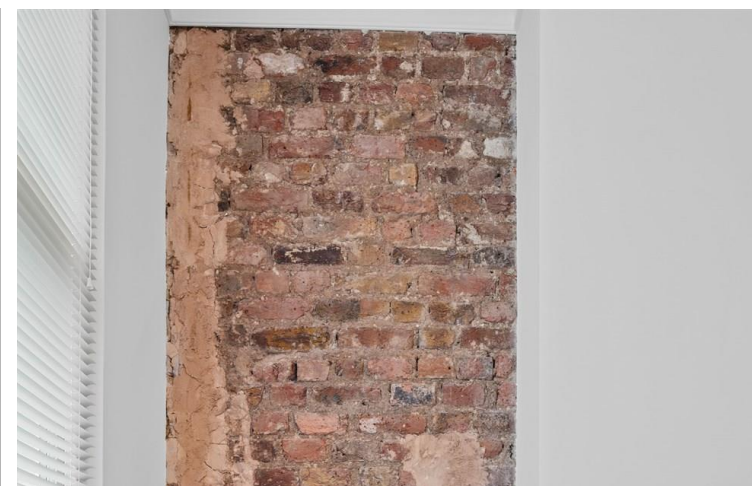
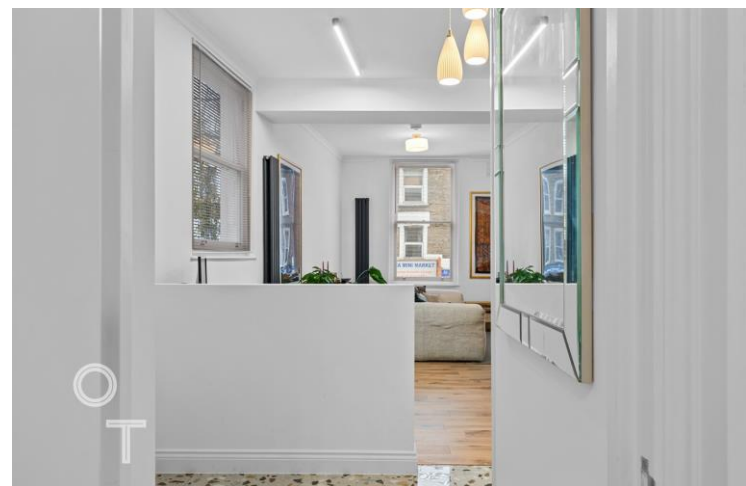
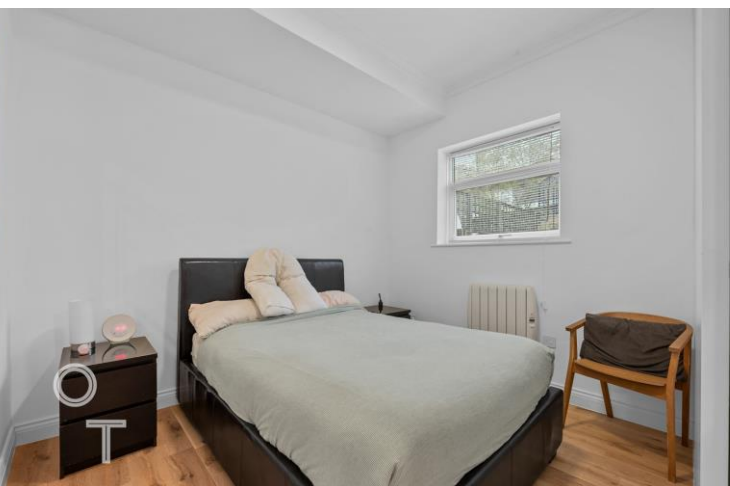
The principal bedroom is set to the rear of the property, continuing some of the interior themes. With an additional study/ occasional second bedroom adjacent. The outside space comes in the form of a large terrace (Undemised) from the bedroom area, ideal for potted plants, a bistro table, and chairs, creating an oasis with this urban setting.

The apartment is in a fantastic position, within walking distance of the green open spaces Hampstead Heath, offering a plethora of recreational facilities and leisurely walks. Gospel Oak Overground is also on your doorstep giving access to Shoreditch & East London, Richmond, and the South London Rail Network.

Grafton Road takes you south onto Prince of Wales Road, with nearby Kentish Town & Chalk Farm underground stations giving access to the Northern Line, while Kentish Town West and Gospel Oak are served by Overground.

Many favoured retailers, restaurants bars are found at Southend Green, Kentish Town, and Swain's Lane opening onto the Holy Lodge Estate with M & S, Kalendar, independent butchers, and a farmer's market near to hand.





£ 510,000.00

1 Bedroom

Leasehold

1 Bathroom

London Borough of Camden

1 Reception

C Council Tax Band

Roof Terrace

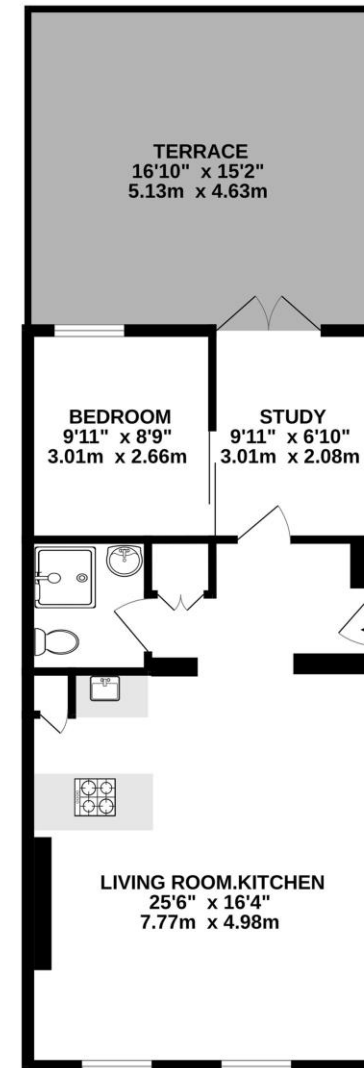
58 EPC Band

Parking Permit

KENTISH TOWN | 189 Kentish Town Rd | London | NW5 2JU | T: 020 7284 1222 | hello@oliverstown.com

ASSOCIATED MAYFAIR | 121 Park Lane | London | W1K 7AG | T: 020 3368 8602 | hello@oliverstown.com

FIRST FLOOR



TOTAL FLOOR AREA : 590sq.ft. (54.8 sq.m.) approx.

Whilst every attempt has been made to ensure the accuracy of the floorplan contained here, measurements of doors, windows, rooms and any other items are approximate and no responsibility is taken for any error, omission or mis-statement. This plan is for illustrative purposes only and should be used as such by any prospective purchaser. The services, systems and appliances shown have not been tested and no guarantee as to their operability or efficiency can be given.

Made with Metropix ©2024