



FOR SALE

## Ferdinand Street, Chalk Farm, NW1

PRICE £575,000.00



3 Bedroom



Kitchen



1 Reception



1 Bathroom



Balcony



Parking Permit

# Ferdinand Street, Chalk Farm, NW1

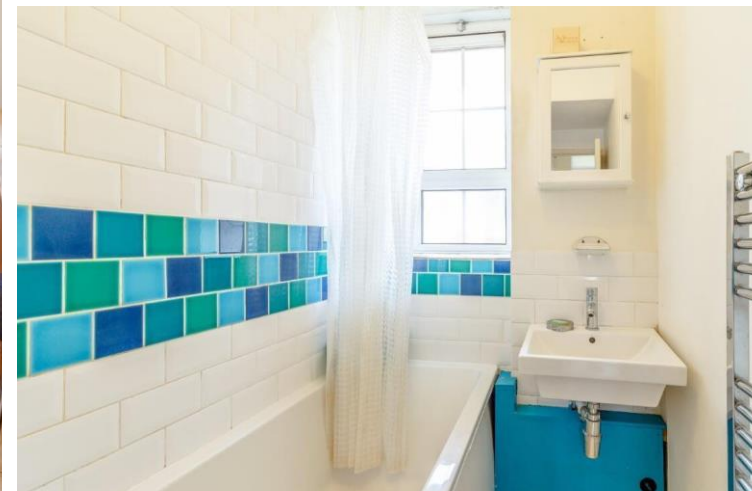
PRICE £575,000.00

A particularly spacious three double bedroom apartment, circa 876 SQ. Ft. - 81.47SQM. set on the third floor of this centrally located purpose-built block, on the borders of Camden & Chalk Farm. The accommodation includes a bright reception, with a separate adjacent kitchen, main bedroom to the rear of the build two further double bedrooms, bathroom suite, hallway with ample storage. The property benefits from high ceilings, double glazed window to rear, retains some period features with lift access to all floors, and abundance of natural light. Externally, there is also a substantial communal courtyard garden with a children's playground, seating area, to the rear of the building.

The property is set back from Ferdinand Street in Chalk Farm, a vibrant neighbourhood, very close to the vast array of independent boutiques, shops and restaurants surrounded by the Stables Market and the world-famous music venue of the Round House. Furthermore, the delightful green open spaces and village life of Primrose Hill next to Regents Park are all within easy walking distance. Excellent transport links nearby provide access to The City, West End and Canary Wharf via Chalk Farm and Camden Town's Underground Stations as well as Kentish Town West Overground Station. Also, on the doorstep; the Eurostar, main-line stations and connections to major Airports; With excellent schools within walking distance too!

**\*\*Offered Chain-Free\*\***





£ 575,000.00

3 Bedroom

Leasehold

1 Bathroom

London Borough of Camden

1 Reception

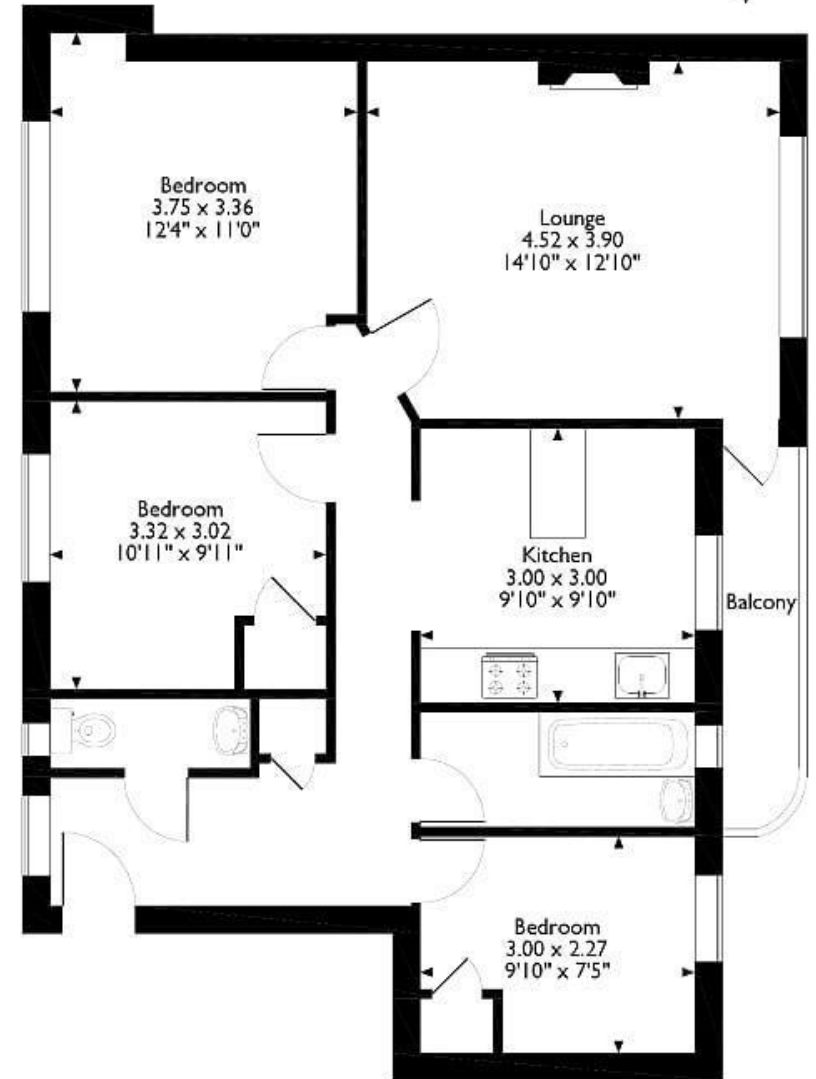
C Council Tax Band

Balcony

73 EPC Band

Parking Permit

## Ferdinand Street, London



Please note that the location of doors, windows and other items are approximate and this floorplan is to be used for illustrative purposes only. Unauthorized reproduction is prohibited.



KENTISH TOWN | 189 Kentish Town Rd | London | NW5 2JU | T: 020 7284 1222 | hello@oliverstown.com

ASSOCIATED MAYFAIR | 121 Park Lane | London | W1K 7AG | T: 020 3368 8602 | hello@oliverstown.com