



Located close to all amenities, schools and bus routes this property comes to the market with a spacious kitchen/diner with double doors opening onto the well maintained extended rear garden. The property comprises of an entrance hallway, cloakroom, excellent size living area and kitchen/diner on the ground floor. The upper level has a modern family bathroom, three bedrooms with the master bedroom having en-suite facilities. Externally it has an open aspect to the front elevation and a feeling of privacy as the property is set back. Extremely well presented throughout and for a three bedroom property it has a generous rear garden compared to your average. Really lovely property. You won't be disappointed!!

Gould Walk, Stockton-On-Tees, TS20 2FZ

3 Bed - House - Semi-Detached

£165,000

EPC Rating: B

Council Tax Band: B

Tenure: Freehold



**SMITH &
FRIENDS**
ESTATE AGENTS

Gould Walk, Stockton-On-Tees, TS20 2FZ



Entrance Hallway

9'0 x 3'2 (2.74m x 0.97m)

1 x Radiator, 1 door to the front, and flooring.

Cloakroom

5'2 x 3'0 (1.57m x 0.91m)

W/c. wash hand basin, 1 x radiator and flooring.

Lounge

15'11 x 11'9 (4.85m x 3.58m)

1 x front double glazed window, 1 x radiator and carpet flooring.

Kitchen/Diner

10'5 x 15'0 (3.18m x 4.57m)

1 x rear double glazing window, double glazed double doors to the rear, sink/drainer and flooring.

Combi Boiler.

Storage Cupboard

Landing

12'0 x 6'2 (3.66m x 1.88m)

Carpet flooring, loft access, 1 x radiator and airing cupboard.

Bedroom

11'7 x 8'5 (3.53m x 2.57m)

1 x front double glazed window, 1 x radiator and carpet flooring.

Fitted Robes.

Ensuite

4'44 x 8'5 (1.22m x 2.57m)

Shower cubicle, w/c, wash hand basin, shaver point and extractor fan.

Bedroom

10'1 x 8'5 (3.07m x 2.57m)

1 x rear double glazed window, 1 x radiator and carpet flooring.

Bedroom

8'8 x 6'3 (2.64m x 1.91m)

1 x front double glazed window, 1 x radiator and carpet flooring.

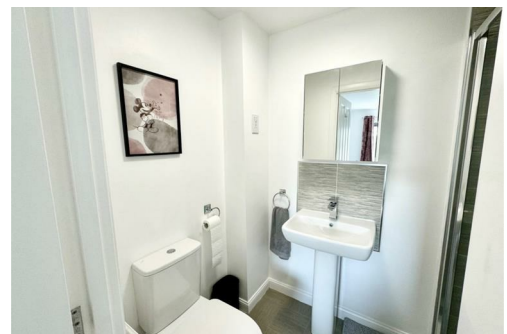
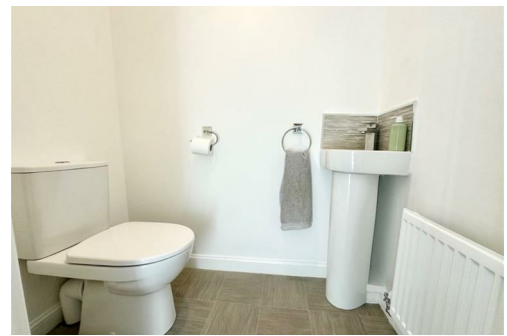
Bathroom

5'6 x 6'2 (1.68m x 1.88m)

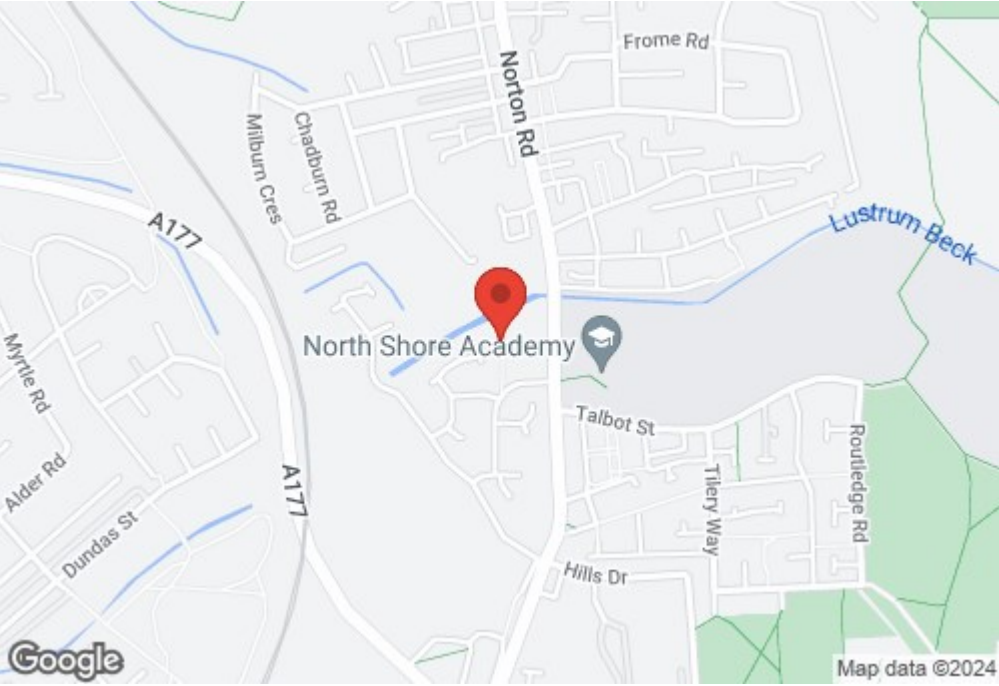
1 x rear double glazed window, wash hand basin, w/c, bath and flooring.

External

Allocated parking, generous extended enclosed rear garden and outside cold tap.



Gould Walk, Stockton-On-Tees, TS20 2FZ

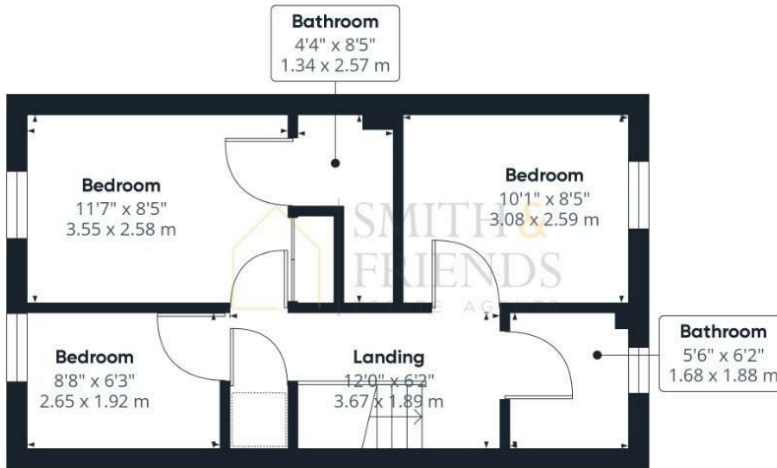


www.smith-and-friends.co.uk

Gould Walk, Stockton-On-Tees, TS20 2FZ



Ground Floor



Floor 1

Approximate total area¹⁾
754.29 ft²
70.08 m²

(1) Excluding balconies and terraces

While every attempt has been made to ensure accuracy, all measurements are approximate, not to scale. This floor plan is for illustrative purposes only.

GIRAFFE 360

Energy Efficiency Rating		Current	Potential
Very energy efficient - lower running costs			96
(92 plus) A			
(81-91) B		84	
(69-80) C			
(55-68) D			
(39-54) E			
(21-38) F			
(1-20) G			
Not energy efficient - higher running costs			
England & Wales		EU Directive 2002/91/EC	

For clarification we wish to inform prospective purchasers that we have prepared these sales particulars as a general guide. We have not carried out a detailed survey, nor tested the services, appliances and specific fittings. Room sizes should not be relied upon for carpets and furnishings, if there are important matters which are likely to affect your decision to buy, please contact us before viewing the property. Smith & Friends Estate Agents can recommend financial services, surveying and conveyancing services to sellers and buyers. Smith & Friends Estate Agents staff may benefit from referral incentives relating to these services.

21 Bishop Street, Stockton-on-Tees, TS18 1SY

01642 607555

stockton@smith-and-friends.co.uk

www.smith-and-friends.co.uk

