



25 Pavilions Court, Windsor Road
Trowbridge BA14 0FY

Monthly Rental Of £965



Wrights Residential, 24 Fore Street , Trowbridge, BA14 8ER
Phone: 01225 755553, Email: enquiries@wrightsresidential.co.uk
www.wrightsresidential.co.uk

Two bedroom apartment

High specification kitchen with integrated white goods

Stunning bathroom with four piece suite

Double glazing

First floor

Open plan living area

Modern electric heating

Allocated parking for two vehicles

This extremely spacious new luxury two bedroom first floor apartment is situated within the popular Pavilions Court on the outskirts of Trowbridge, close to Trowbridge retail park. Features include a high specification kitchen with integrated white goods, open plan living area and a stunning high quality bathroom, modern electric heating, double glazing and allocated parking for two vehicles. Available from late February, unfurnished.

The property comprises

First Floor

Entrance Hall

With wood laminate flooring and cupboard housing hot water cylinder and washer/dryer.

Open plan Kitchen/Living Room 26' 7" x 11' 4" (8.10m x 3.45m) max

With wood laminate flooring, a range of eye level and base units, worktops with tiled splashbacks, integrate electric oven and ceramic hob with extractor hood over, integrated fridge/freezer and slimline dishwasher, one and a half bowl sink/drain unit, wall mounted modern electric heater and double glazed window.

Bedroom 1 13' 10" x 8' 8" (4.21m x 2.63m)

With wall mounted modern electric heater and double glazed window.

Bedroom 2 9' 4" x 14' 9" (2.85m x 4.50m)

With wall mounted modern electric heater and double glazed window.

Bathroom

With tiled flooring, fully tiled walls, suite comprising large walk in shower enclosure with mains rainfall shower, bath, hand basin and W.C, heated towel rail, LED illuminated mirror and extractor fan.

Parking

Allocated parking for two vehicles. Further visitor spaces available.

Council tax

The property is in council tax band B.

Energy Performance

The current EPC rating is D (64)

Services

Mains electricity, water and drainage are connected. Please note that the Agent has not tested any appliances.

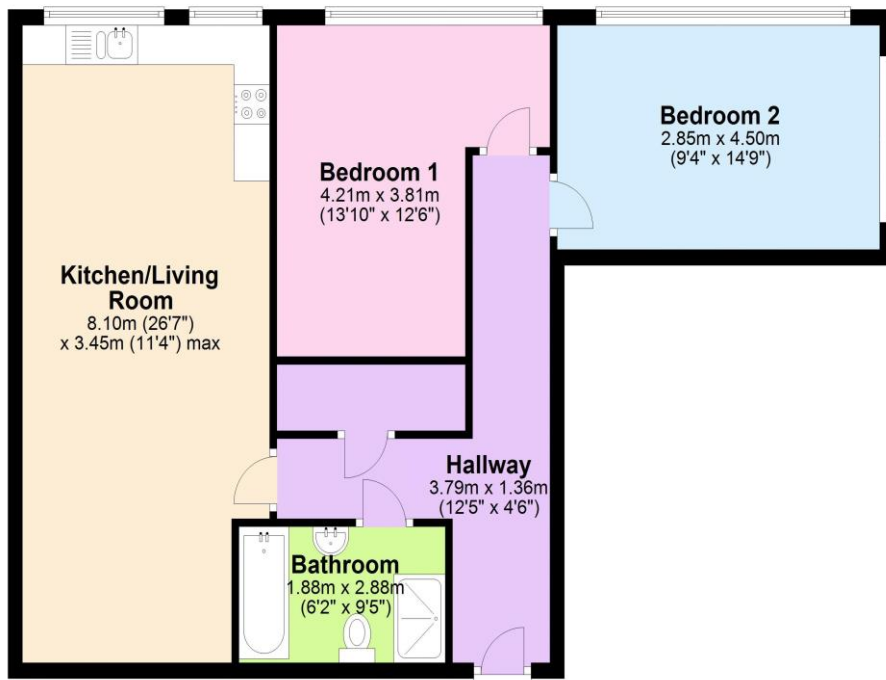
Disclaimer

Every reasonable effort has been made to ensure the accuracy of these particulars. However, please note the following: Property details, including references to furnishings, fittings, or equipment, are provided in good faith but do not form part of any offer or contract unless specifically confirmed in writing by the Landlord or Agent. Any items shown in photographs may not be included in the tenancy and should be confirmed with the Agent prior to application. Descriptions of the property's condition or specification are for guidance only. Room sizes and measurements are approximate and for general guidance only. Prospective tenants must satisfy themselves of their accuracy.



First Floor

Approx. 73.2 sq. metres (787.5 sq. feet)



Total area: approx. 73.2 sq. metres (787.5 sq. feet)