

Wrights



Flat 2 Pentagon House Castle Street
Trowbridge BA14 8AU

Monthly Rental Of £995



Wrights Residential, 24 Fore Street , Trowbridge, BA14 8ER
Phone: 01225 755553, Email: enquiries@wrightsresidential.co.uk
www.wrightsresidential.co.uk

Large two bedroom top floor bathroom

Two double bedrooms

Modern electric heating

Unfurnished

Spacious lounge

Modern kitchen and shower room

Double glazing

Parking space available for £50pcm

This spacious two bedroom top floor apartment is situated in Trowbridge town centre. Features include two double bedrooms, modern electric heating, double glazing and a modern fitted kitchen and shower room. A parking space is also available for an additional charge of £50pcm. Available from mid October, unfurnished.

The property comprises

Entrance Hall

With intercom phone and large storage cupboard.

Lounge 24' 9" x 12' 2" (7.54m x 3.72m) *max*

With Dimplex Quantum electric storage heater and double glazed windows.

Kitchen 12' 2" x 9' 10" (3.72m x 2.99m) *max*

With a range of eye level and base units, worktops with splash backs, one and a half bowl sink/drainers, integrated electric oven and ceramic hob with extractor hood over, space for fridge/freezer, washing machine and condenser tumble drier, extractor fan and skylight window.

Bedroom 1 14' 5" x 12' 8" (4.40m x 3.85m)

With Dimplex Quantum electric storage heater and double glazed windows.

Bedroom 2 12' 6" x 12' 8" (3.81m x 3.86m) *max plus wardrobe*

With built in wardrobe, Dimplex Quantum electric storage heater and double glazed windows.

Shower Room

With white suite comprising double shower enclosure with electric shower, hand basin with vanity unit and low level W.C, heated towel rail and extractor fan.

Council tax

The property is currently in council tax band A.

Services

Mains electricity, water and drainage are connected. Please note that the Agent has not tested any appliances.

Broadband

Ultrafast broadband is available (source - Ofcom)
Predicted maximum download speed - 1000Mbps

Mobile phone coverage

Both indoor and outdoor coverage are likely - source Ofcom.

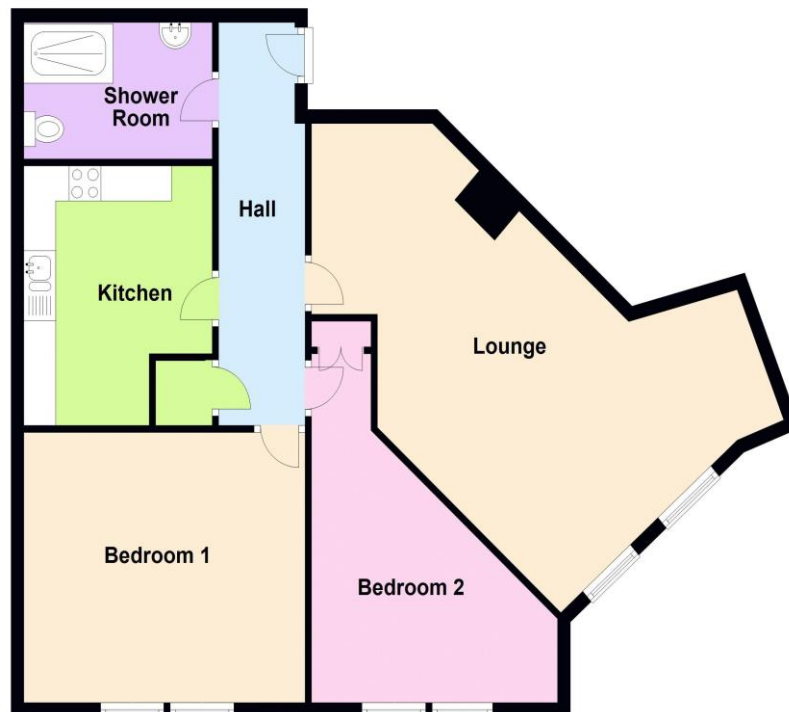
Disclaimer

Every reasonable effort has been made to ensure the accuracy of these particulars. However, please note the following: Property details, including references to furnishings, fittings, or equipment, are provided in good faith but do not form part of any offer or contract unless specifically confirmed in writing by the Landlord or Agent. Any items shown in photographs may not be included in the tenancy and should be confirmed with the Agent prior to application. Descriptions of the property's condition or specification are for guidance only. Room sizes and measurements are approximate and for general guidance only. Prospective tenants must satisfy themselves of their accuracy.



Top Floor

Approx. 83.7 sq. metres (900.8 sq. feet)



Total area: approx. 83.7 sq. metres (900.8 sq. feet)