

Wrights



2A Fleur-De-Lys Drive

Trowbridge BA14 9QH

Monthly Rental Of £895



Wrights Residential, 24 Fore Street , Trowbridge, BA14 8ER
Phone: 01225 755553, Email: enquiries@wrightsresidential.co.uk
www.wrightsresidential.co.uk

Two bedroom house

Situated within the popular village of Southwick

Garden

Gas central heating

PVCu double glazing

Unfurnished

Available late August

This two bedroom mid terrace property is situated on a cul-de-sac within the popular village of Southwick. Features include an open plan kitchen/living room, gas central heating, double glazing and an enclosed rear garden. Available late August, unfurnished.

The property comprises:

Externally

Enclosed rear garden. Off road parking available (non allocated).

Ground Floor:

Council tax

The property is currently in council tax band B

Open plan kitchen/living room *23' 0" x 11' 9" (7.02m x 3.59m)*

The spacious open plan kitchen/living room benefits a PVCu double glazed window to the front and PVCu French doors leading to the rear garden. The recently fitted kitchen comprises a range of modern wall and base units with wood laminate worktops, integrated electric oven and four ring gas hob with extractor hood over, stainless steel sink/drain, space for fridge and freezer and plumbing for washing machine.

Services

Mains gas, electricity, water and drainage are connected. The property is heated by a gas fired central heating boiler to radiators. Please note that the Agent has not tested any appliances.

First Floor:

Broadband

Ultrafast available (source - Ofcom) Predicted maximum download speed - 1000Mbps

Landing

Mobile phone coverage

Outdoor coverage is likely - source Ofcom.

Bedroom 1 *11' 8" x 9' 8" (3.55m x 2.95m)*

With storage cupboard and PVCu double glazed window to the front.

Bedroom 2 *11' 9" max x 7' 3" max (3.59m x 2.21m)*

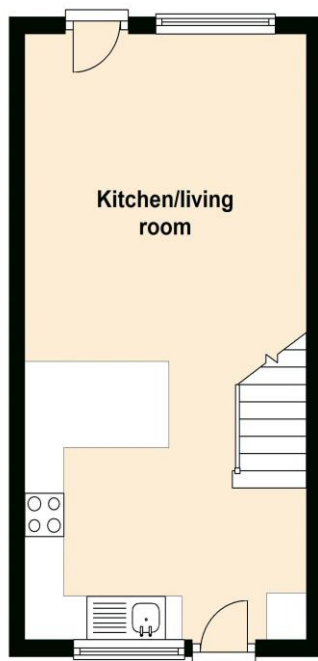
With PVCu double glazed window to the rear.

Bathroom

With recently fitted white suite comprising bath with shower over, W.C and corner hand basin.



Ground Floor



First Floor

