

Wrights



27 Pavilions Court, Windsor Road
Trowbridge BA14 0FY

Monthly Rental Of £885



Wrights Residential, 24 Fore Street , Trowbridge, BA14 8ER
Phone: 01225 755553, Email: enquiries@wrightsresidential.co.uk
www.wrightsresidential.co.uk

Spacious two bedroom apartment

Open plan kitchen/living room with integrated white goods

Modern bathroom

Modern electric heating

First floor

Two double bedrooms

En-suite shower room

Double glazing

This spacious two bedroom first floor apartment is situated within the popular Pavilions Court development on the outskirts of Trowbridge, close to Trowbridge retail park. Features include an open plan kitchen/living room with integrated white goods, en-suite shower room, modern electric heating, double glazing and allocated parking for two vehicles. Available from mid July, unfurnished.

The property comprises

First Floor

Hallway

With wood laminate flooring and cupboard housing hot water cylinder and washer/dryer.

Open plan kitchen/living room *16' 8" x 16' 0" (5.09m x 4.88m)*

With wood laminate flooring, a range of eye level and base units, worktops with tiled splashbacks, integrate electric oven and ceramic hob with extractor hood over, integrated fridge/freezer and slimline dishwasher, one and a half bowl sink/drain unit, wall mounted modern electric heater and double glazed window.

Bedroom 1 *10' 8" x 20' 1" (3.24m x 6.13m)*

With wall mounted modern electric heater and double glazed window.

En-suite

With tiled flooring, white suite comprising shower enclosure with mains shower, hand basin and W.C, heated towel rail and extractor fan.

Bedroom 2 *13' 1" x 11' 1" (4.00m x 3.38m)*

With wall mounted modern electric heater and double glazed window.

Bathroom

With tiled flooring, fully tiled walls, white suite comprising bath, hand basin and W.C, heated towel rail, LED illuminated mirror and extractor fan.

Parking

Allocated parking for two vehicles.

Council tax

The property is currently in council tax band B.

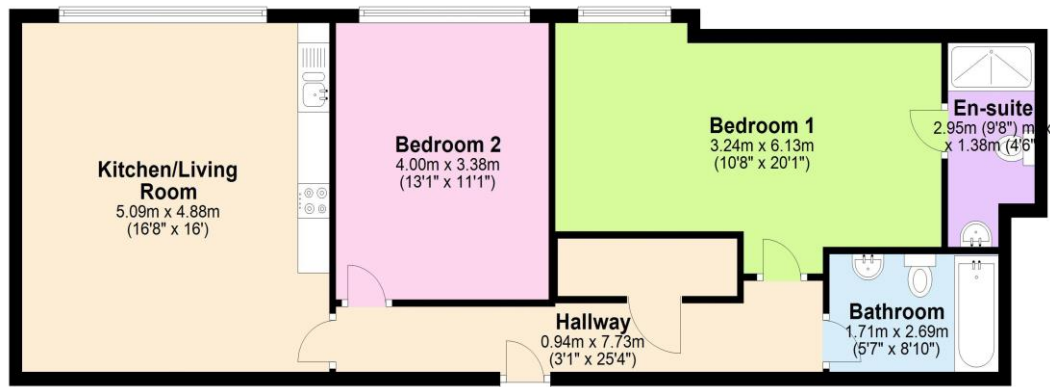
Services

Mains electricity, water and drainage are connected. Please note that the Agent has not tested any appliances.



First Floor

Approx. 78.3 sq. metres (842.8 sq. feet)



Total area: approx. 78.3 sq. metres (842.8 sq. feet)