

Wrights



Flat 3A White Hart Yard
Trowbridge BA14 8BY

Monthly Rental Of £850



Wrights Residential, 24 Fore Street, Trowbridge, BA14 8ER
Phone: 01225 755553, Email: enquiries@wrightsresidential.co.uk
www.wrightsresidential.co.uk

Two bedroom first floor apartment

Private entrance

PVCu double glazing

Two double bedrooms

Town centre location

Gas central heating

Open plan kitchen/living room

Spacious shower room

This spacious two bedroom first floor apartment is situated in the the heart of Trowbridge town centre. Features include gas central heating, PVCu double glazing, an open plan kitchen/living area, two double bedrooms and a spacious shower room. Available from late July, unfurnished.

The property comprises

Entrance Hall

With radiator, storage cupboard and stairs to the first floor.

First floor

Landing

With cupboard housing gas boiler and sky light.

Open plan kitchen/living room

With wood laminate flooring, a range of eye level and base units, worktops with upstands, integrated electric oven and ceramic hob with extractor hood over, space for fridge/freezer and washing machine, radiator and two PVCu double glazed windows.

Hall

With wood laminate flooring and radiator.

Bedroom 1

With wood laminate flooring, radiator and double glazed window.

Bedroom 2 *10' 0" x 10' 2" (3.04m x 3.11m)*

With wood laminate flooring, radiator and PVCu double glazed window.

Shower Room

With tiled floor, white suite comprising shower enclosure with mains shower, hand basin with vanity unit and W.C, heated towel rail, inset ceiling spotlights, extractor fan and obscured PVCu double glazed window.

Council tax

The property is in council tax band A.

Services

Mains gas, electricity, water and drainage are connected. The property is heated by a gas fired central heating boiler to radiators. Please note that the Agent has not tested any appliances.

Broadband

Superfast available (source - Ofcom) Predicted maximum download speed - 80Mbps

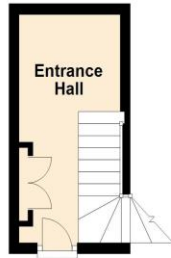
Mobile phone coverage

Both indoor and outdoor coverage are likely - source Ofcom



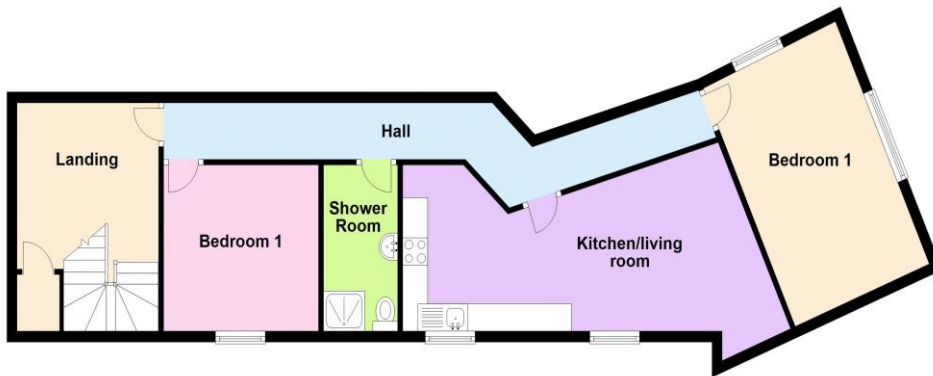
Ground Floor

Approx. 8.5 sq. metres (91.4 sq. feet)



First Floor

Approx. 74.9 sq. metres (806.4 sq. feet)



Total area: approx. 83.4 sq. metres (897.8 sq. feet)