

# Wrights



**1 Times Square Duke Street**  
Trowbridge BA14 8GN

**Monthly Rental Of £1,050**



Wrights Residential, 24 Fore Street , Trowbridge, BA14 8ER  
Phone: 01225 755553, Email: [enquiries@wrightsresidential.co.uk](mailto:enquiries@wrightsresidential.co.uk)  
[www.wrightsresidential.co.uk](http://www.wrightsresidential.co.uk)

**Stunning two bedroom cottage**

**One allocated parking space**

**Kitchen/breakfast room**

**Electric heating**

**Situated within walking distance to Trowbridge town centre and railway station**

**Communal rear garden**

**Downstairs w.c**

**Unfurnished**

**This stunning two bedroom cottage is situated within walking distance to Trowbridge town centre and railway station. Features include one allocated parking space, communal rear garden, kitchen/breakfast room, downstairs w.c and electric heating. Available immediately, unfurnished.**

**The property comprises**

### **Ground Floor**

**Lounge** *15' 11" x 11' 6" (4.84m x 3.50m)*

With wall mounted electric heater and window to the front.

**Rear Hall**

With stairs to the first floor with storage area under.

**Kitchen/Breakfast Room** *13' 6" x 12' 8" (4.11m x 3.85m) max*

With a range of eye level and base units, integrated electric oven and ceramic hob with extractor hood over, integrated fridge freezer, freestanding washing, sink/drainage unit, inset ceiling spotlights and PVCU double glazed back door.

**Cloakroom**

With white suite comprising low level w.c and pedestal hand basin, heated towel rail, extractor fan and cupboard housing hot water cylinder.

### **First Floor**

**Landing**

With wall mounted electric heater.

**Bedroom 1** *15' 11" x 11' 6" (4.84m x 3.50m)*

With wall mounted electric heater and two sash windows to the front.

**Bedroom 2** *12' 8" x 7' 10" (3.87m x 2.38m)*

With wall mounted electric heater and double glazed window to the rear.

**Bathroom**

With white suite comprising bath with rainfall shower over, pedestal hand basin and low level w.c, inset ceiling spotlights, heated towel rail and extractor fan.

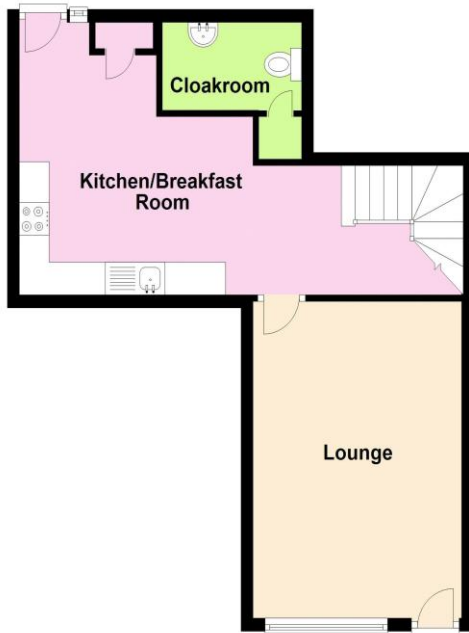
**Externally**

Block paved communal garden and one allocated parking space.



**Ground Floor**

Approx. 44.0 sq. metres (474.1 sq. feet)



**First Floor**

Approx. 40.8 sq. metres (438.9 sq. feet)

