



Wrights
01225 755553

Orchard House, Kingsdown, Corsham, Wiltshire, SN13 8AY

£225,000

Wrights Residential are delighted to offer this one/two bedroom annexe with its own private garden, situated in Kingsdown with great transport links to Bath.

The property offers a lounge, kitchen, ground floor bedroom, mezzanine bedroom and wet room.

Externally the property offers an enclosed garden and off road parking for one vehicle.

The property comprises

Ground Floor

Lounge

With stone tiled flooring, spotlights, stairs to the mezzanine bedroom and french doors to the garden. Opens into...

Kitchen

With stone tiled flooring, a range of eye level and base units with wooden worktops and tiled splashbacks, belfast sink, integrated oven and hob and two velux windows.

Mezzanine Bedroom

With spotlights and velux window.

Rear Hall

With tiled flooring and double doors to...

Bedroom/Second living room

With stone tiled flooring, rood window and doors to the communal hall.

Shower Room

With tiled flooring, low level w.c, pedestal hand basin, large walk in shower and velux windows.

Externally

The property offers a spacious enclosed garden laid to patio and off road parking for one vehicle.

Tenure

The property is sold as freehold.

Council tax

The property is currently in council tax band B.

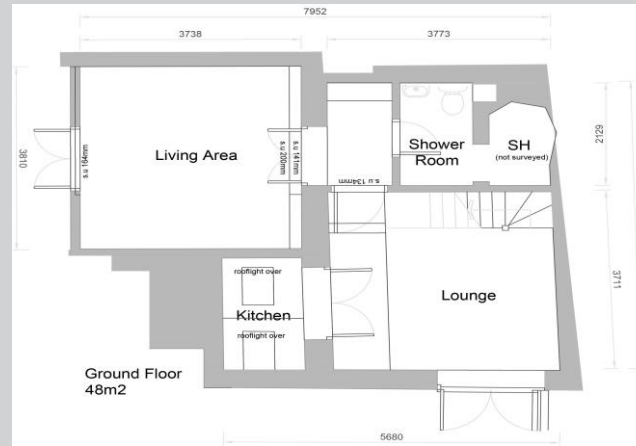


EXCLUSIVE MORTGAGE
ADVICE FOR WRIGHTS
RESIDENTIAL WITH

**GEM
MORTGAGES**

Gemma Coleman
Telephone 01225 755553
Mobile: 07717 749944
Email: gemma@gemmortgages.co.uk

CALL NOW FOR FREE MORTGAGE
ADVICE THAT YOU CAN TRUST



Wrights
01225 755553

info@wrightsresidential.co.uk | www.wrightsresidential.co.uk

01225 755553



T 01225 755553

E info@wrightsresidential.co.uk

W www.wrightsresidential.co.uk

A 24 Fore Street, Trowbridge, Wiltshire, BA14 8ER

Disclaimer

While every reasonable effort is made to ensure the accuracy of descriptions and content, we should make you aware of the following guidance or limitations: The Agent has not tested any apparatus, equipment, fixtures or fittings or services and so cannot verify that they are in working order or fit for the purpose. A Buyer is advised to obtain verification from their Solicitor or Surveyor. References to the Tenure of a Property are based on information supplied by the Seller. The Agent has not had sight of the title documents. A Buyer is advised to obtain verification from their Solicitor. Items shown in photographs are NOT included unless specifically confirmed with the Vendor's solicitor. They may however be available by separate negotiation. The room sizes are approximate and only intended as general guidance. You must verify the dimensions carefully to satisfy yourself of their accuracy.