



WHERE STANDARDS MATTER

Spencer Munson
128 High Road
Loughton IG10 4BE

Tel: 020 8502 2222

loughton@spencermunson.co.uk
Website: spencermunson.co.uk



Smarts Lane Mews, Smarts Lane, Loughton, IG10

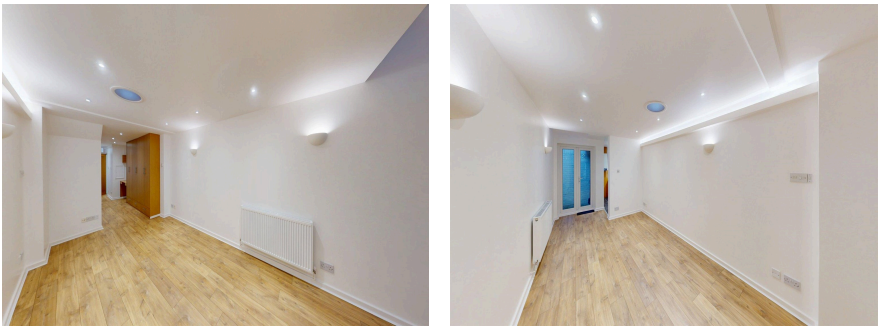
****MODERN GROUND FLOOR STUDIO APARTMENT WITH COURTYARD** ** MODERN FITTINGS AND AMPLE STORAGE** **SHORT WALK TO LOUGHTON CENTRAL LINE STATION** ** LOCAL TO SHOPS AND AMENITIES** ** IDEAL FOR COMMUTERS** ** AVAILABLE NOW ON A MINIMUM 12 MONTHS TENANCY ** ** EPC RATING C. COUNCIL TAX BAND B****

Rent: £1,400 - Monthly



Smarts Lane Mew, Loughton, IG10

Lounge/Bedroom



Wardrobe Area

Kitchen
Kitchen



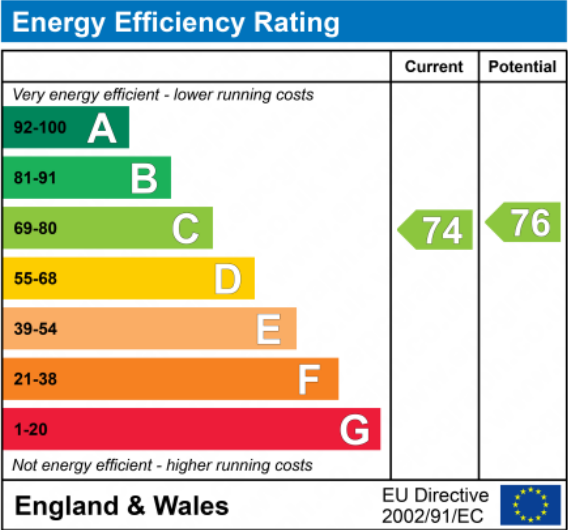
Bathroom



Small Garden

Central Heating

Double Glazing



Introducing a stunning modern STUDIO apartment located in the highly sought after area of Loughton. This ground floor apartment is offering a modern and stylish living space. Boasting a spacious reception area, a fully fitted kitchen with appliances, and a modern shower room. The apartment also benefits from ample fitted

wardrobes, double glazing, gas central heating, and a small private courtyard.

Located just a 5 minute walk from Loughton Tube, this apartment is perfect for commuters looking for easy access to London. The property is also situated close to the High Street, which offers a range of local shops including Marks & Spencer.

This property is available to rent from the 13th February 2026 and is offered unfurnished. Don't miss out on this fantastic opportunity to experience luxury living in a prime location. Contact us today to arrange a viewing.
Council Tax B EPC Rating C

Smarts Lane Mew, Loughton, IG10**Disclaimer**

These particulars are intended to give a fair and substantially correct overall description for the guidance of intending tenants/purchasers and do not constitute an offer or part of a contract. Prospective tenants/purchasers and/or lessees should seek their own professional advice. All descriptions, dimensions, reference to condition, fixtures, fittings and necessary permissions for use and occupation and other details are given in good faith and are believed to be correct. However, intending tenants/purchasers should not rely on them as statements or representations of fact, but must satisfy themselves by inspection or otherwise as to the correctness of each of them. Fixtures and fittings shown in pictures and on viewings may well not be included in any tenancy/sale and any prospective tenant/purchaser must clarify this for themselves. All measurements and floorplans are approximate and produced as a guide in good faith. Please note that some of the furniture and decor items shown in these images have been digitally added using AI technology for illustrative purposes. The actual property may differ in appearance. Prospective buyers or renters are encouraged to visit the property in person to get an accurate representation.