



Spencer Munson  
128 High Road  
Loughton IG10 4BE

Tel: 020 8502 2222

[loughton@spencermunson.co.uk](mailto:loughton@spencermunson.co.uk)

Website: [spencermunson.co.uk](http://spencermunson.co.uk)



### Beehive Lane, Gants Hill, IG1

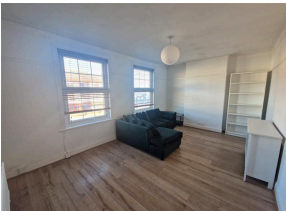
**\*\* ONE BEDROOM FLAT ABOVE A SHOP \*\* \*\* GOOD SIZED LOUNGE \*\* \*\* DOUBLE BEDROOM \*\***  
**\*\* UNFURNISHED \*\* \*\* SHORT WALK TO GANTS HILL CENTRAL LINE STATION \*\* \*\* FIRST FLOOR \*\***  
**\*\* CLOSE TO SHOPS AND AMENITIES \*\* \*\* AVAILABLE NOW ON A MINIMUM 12 MONTHS**  
**TENANCY \*\* \*\* EPC RATING D COUNCIL TAX BAND B \*\***

**Rent: £1,250 - Monthly**



Beehive Lane, Ilford, IG1

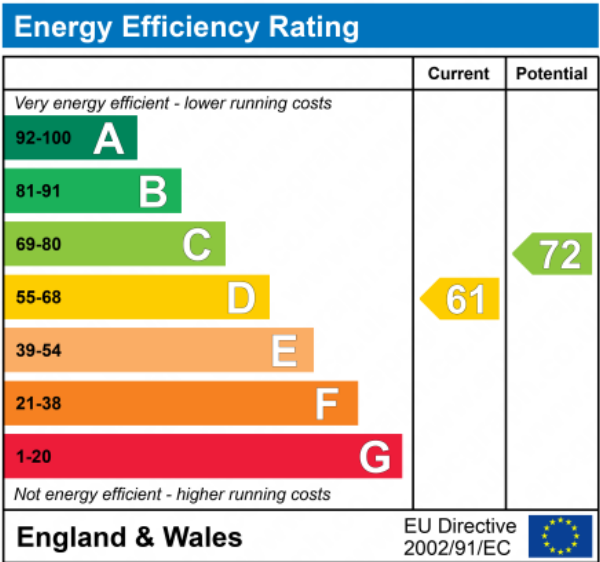
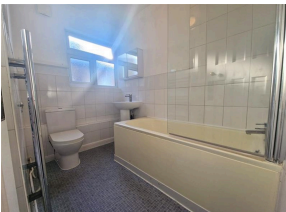
Reception 1  
Reception 1



Kitchen



Bathroom



Spencer Munson are pleased to offer this one bedroom flat above a shop. Within a 9 minute walk to Gants Hill central line station according too Google maps. Busy location and close to local amenity's. Good size flat perfect for a couple or single person. Double bedroom. CALL US TODAY TO ARRANGE YOUR VIEIWNG. Available now on an unfurnished basis EPC rating: D Council Tax Band B

**Beehive Lane, Ilford, IG1****Disclaimer**

These particulars are intended to give a fair and substantially correct overall description for the guidance of intending tenants/purchasers and do not constitute an offer or part of a contract. Prospective tenants/purchasers and/or lessees should seek their own professional advice. All descriptions, dimensions, reference to condition, fixtures, fittings and necessary permissions for use and occupation and other details are given in good faith and are believed to be correct. However, intending tenants/purchasers should not rely on them as statements or representations of fact, but must satisfy themselves by inspection or otherwise as to the correctness of each of them. Fixtures and fittings shown in pictures and on viewings may well not be included in any tenancy/sale and any prospective tenant/purchaser must clarify this for themselves. All measurements and floorplans are approximate and produced as a guide in good faith. Please note that some of the furniture and decor items shown in these images have been digitally added using AI technology for illustrative purposes. The actual property may differ in appearance. Prospective buyers or renters are encouraged to visit the property in person to get an accurate representation.