



WHERE STANDARDS MATTER

Spencer Munson
128 High Road
Loughton IG10 4BE

Tel: 020 8502 2222

loughton@spencermunson.co.uk
Website: spencermunson.co.uk



Branch Road, London, E14

**** MODERN TWO BEDROOM APARTMENT WITH CITY VIEWS ** ** TWO DOUBLE BEDROOMS ****
**** FURNISHED** ** ENSUITE ** ** PARKING ** ** CONCIERGE ** ** LARGE BALCONY ** ****
VIEWS OF LIMEHOUSE ** ** AVAILABLE 17TH MAY 2025 ON A MINIMUM 12 MONTHS TENANCY
**** ** EPC RATING: D ** ** COUNCIL TAX BAND : F ****

Rent: £2,795 - Monthly

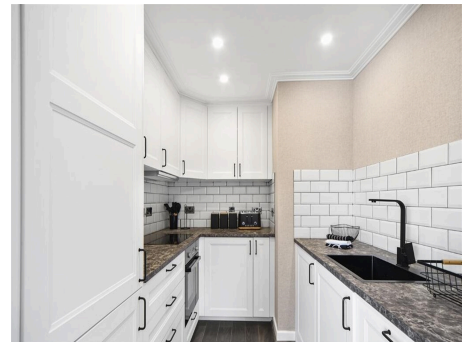
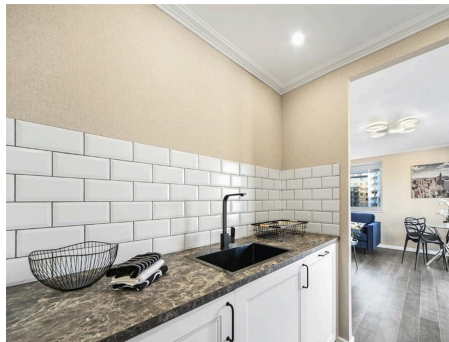


Medland House, Tower Hamlets, London, E14

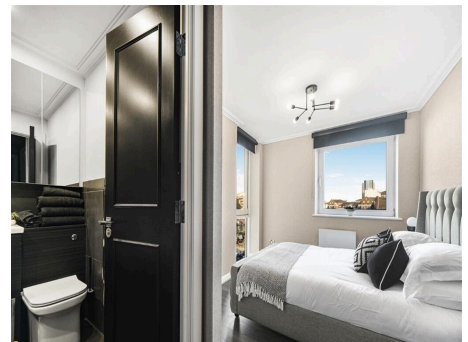
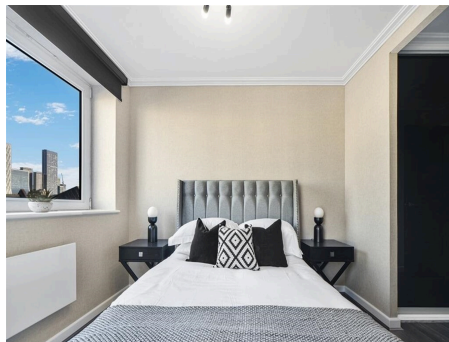
Reception 1



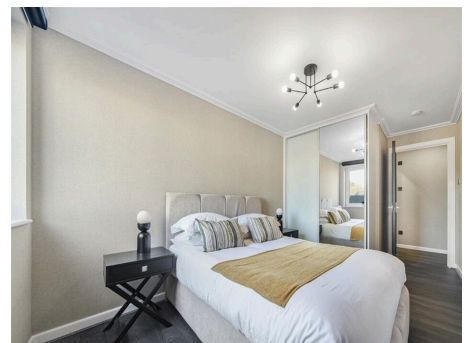
Kitchen



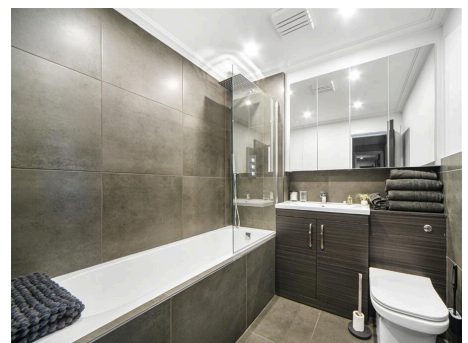
Bedroom 1



Bedroom 2



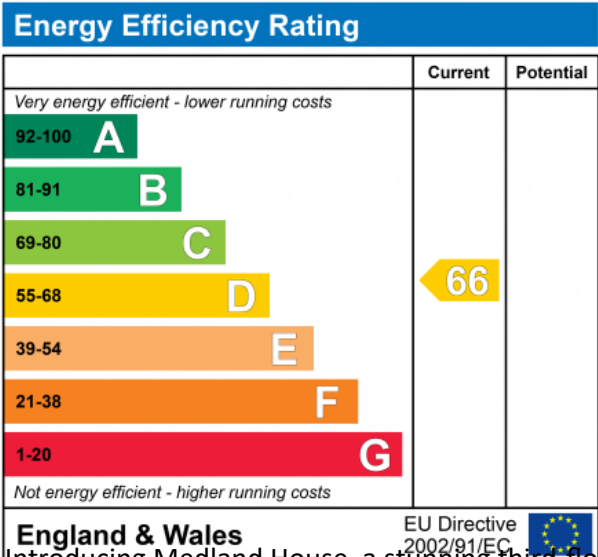
Bathroom 1



Ensuite

Private balcony Garden

Parking



Introducing Medland House, a stunning third floor apartment located in the vibrant area of Tower Hamlets, London, E14. This contemporary property boasts 2 bedrooms, 2 bathrooms, and a stylish reception room, making it an ideal choice for those seeking modern city living. The apartment features a sleek design with high-quality finishes throughout, creating a welcoming and comfortable atmosphere. The open-plan layout enhances the sense of space and light, perfect for both relaxing and entertaining. Situated in a sought-after location, residents of Medland House can enjoy easy access to a variety of local amenities, including shops, restaurants, and transport links. The property is available for rent at £2817 pcm, offering excellent value for its prime location and desirable features. Don't miss the opportunity to make this contemporary apartment your next home. Contact us today to arrange a viewing and experience the best of city living at Medland House.

Medland House, Tower Hamlets, London, E14

Disclaimer

These particulars are intended to give a fair and substantially correct overall description for the guidance of intending tenants/purchasers and do not constitute an offer or part of a contract. Prospective tenants/purchasers and/or lessees should seek their own professional advice. All descriptions, dimensions, reference to condition, fixtures, fittings and necessary permissions for use and occupation and other details are given in good faith and are believed to be correct. However, intending tenants/purchasers should not rely on them as statements or representations of fact, but must satisfy themselves by inspection or otherwise as to the correctness of each of them. Fixtures and fittings shown in pictures and on viewings may well not be included in any tenancy/sale and any prospective tenant/purchaser must clarify this for themselves. All measurements and floorplans are approximate and produced as a guide in good faith. Please note that some of the furniture and decor items shown in these images have been digitally added using AI technology for illustrative purposes. The actual property may differ in appearance. Prospective buyers or renters are encouraged to visit the property in person to get an accurate representation.