



WHERE STANDARDS MATTER

Spencer Munson  
128 High Road  
Loughton IG10 4BE

Tel: 020 8502 2222

[loughton@spencermunson.co.uk](mailto:loughton@spencermunson.co.uk)  
Website: [spencermunson.co.uk](http://spencermunson.co.uk)



### **Sultan Road, Wanstead, E11**

Introducing this charming 1-bedroom, 1-bathroom apartment in Wanstead. **\*\*Brand new fitted kitchen\*\*** **\*\* Brand new fitted Bathroom and Shower\*\*** **\*\*Modern elegance in Wanstead\*\***  
**\*\*School Nearby \*\*** **\*\*Close to Green Space\*\*** **\*\*Book your viewing today \*\*** **\*\*Available now \*\***  
**\*\*EPC - D\*\*** **\*\*Council Tax B\*\***

**Rent: £1,450 - Monthly**



Sultan Road, E11, Wanstead

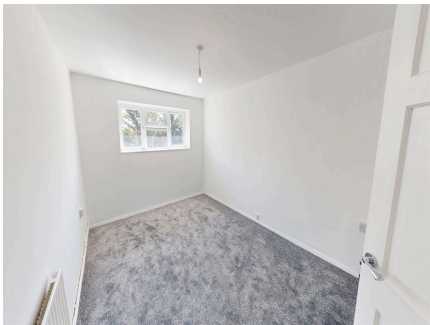
Reception



Kitchen



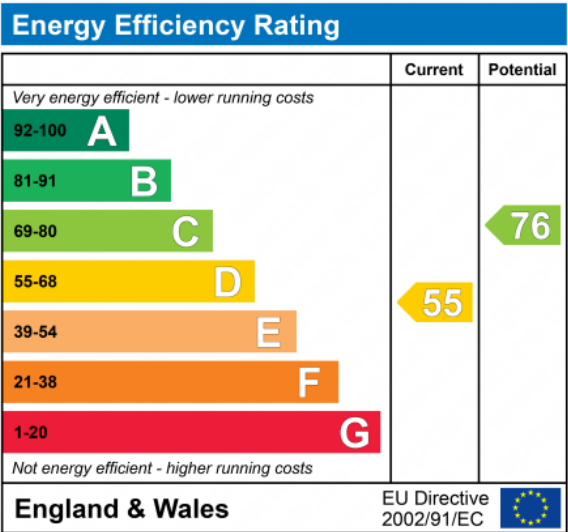
Bedroom



Bathroom

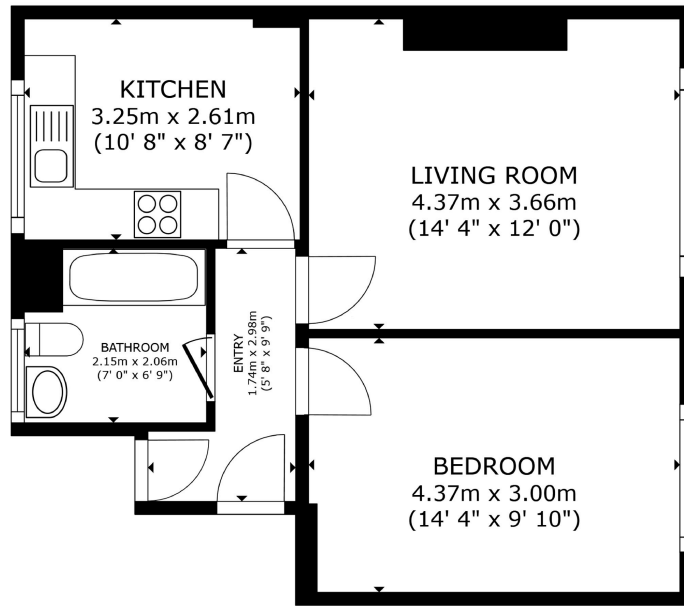


EPC



Introducing a newly refurbished 1-bedroom top-floor apartment located in Sultan Road, Wanstead. Situated on the 3rd floor, the property has a brand new fitted kitchen and bathroom, complete with a shower, along with new laminate flooring and carpets in the bedroom and lounge. The double-glazed windows allow ample natural light to fill the space. With excellent transport links and green spaces nearby, this apartment is perfect for those seeking convenience. Don't miss the opportunity to make this apartment your new home, available now. Contact us to arrange a viewing. EPC rating - D. Council Tax Band - B.

## Sultan Road, E11, Wanstead



FLOOR PLAN



GROSS INTERNAL AREA  
FLOOR PLAN 47.3 m<sup>2</sup> (509 sq. ft.)  
TOTAL : 47.3 m<sup>2</sup> (509 sq. ft.)  
SIZES AND DIMENSIONS ARE APPROXIMATE, ACTUAL MAY VARY.



### **Disclaimer**

These particulars are intended to give a fair and substantially correct overall description for the guidance of intending tenants/purchasers and do not constitute an offer or part of a contract. Prospective tenants/purchasers and/or lessees should seek their own professional advice. All descriptions, dimensions, reference to condition, fixtures, fittings and necessary permissions for use and occupation and other details are given in good faith and are believed to be correct. However, intending tenants/purchasers should not rely on them as statements or representations of fact, but must satisfy themselves by inspection or otherwise as to the correctness of each of them. Fixtures and fittings shown in pictures and on viewings may well not be included in any tenancy/sale and any prospective tenant/purchaser must clarify this for themselves. All measurements and floorplans are approximate and produced as a guide in good faith. Please note that some of the furniture and decor items shown in these images have been digitally added using AI technology for illustrative purposes. The actual property may differ in appearance. Prospective buyers or renters are encouraged to visit the property in person to get an accurate representation.