

Van Ryne House, High Road, Loughton, IG10

**** MODERN ONE BEDROOM GROUND FLOOR FLAT ** ** Modern Kitchen open to Lounge ** **
Just off Loughton High Road and close to Loughton Central line station & High Road shops ** **
UNFURNISHED ** ** EPC rating D ** ** Council Tax C** ** Secure Underground Parking Space **
** ** Available 12th June ****

Rent: £1,295 - Monthly



Van Ryne House, Loughton IG10

Lounge

4.06m (13'4) x 4.04m (13'3)



Kitchen



Bedroom One

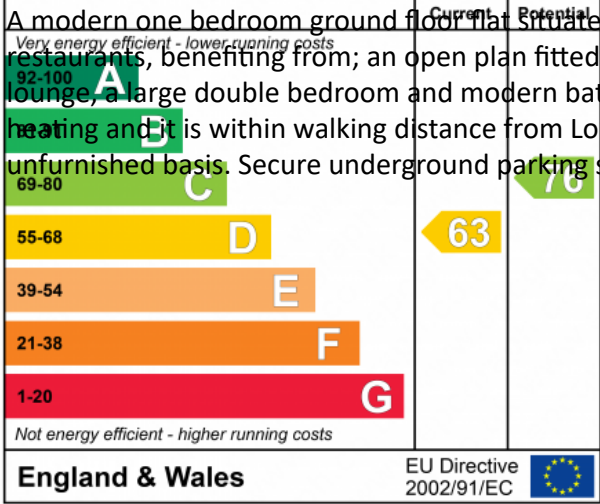
3.84m (12'7) x 2.92m (9'7)



Bathroom

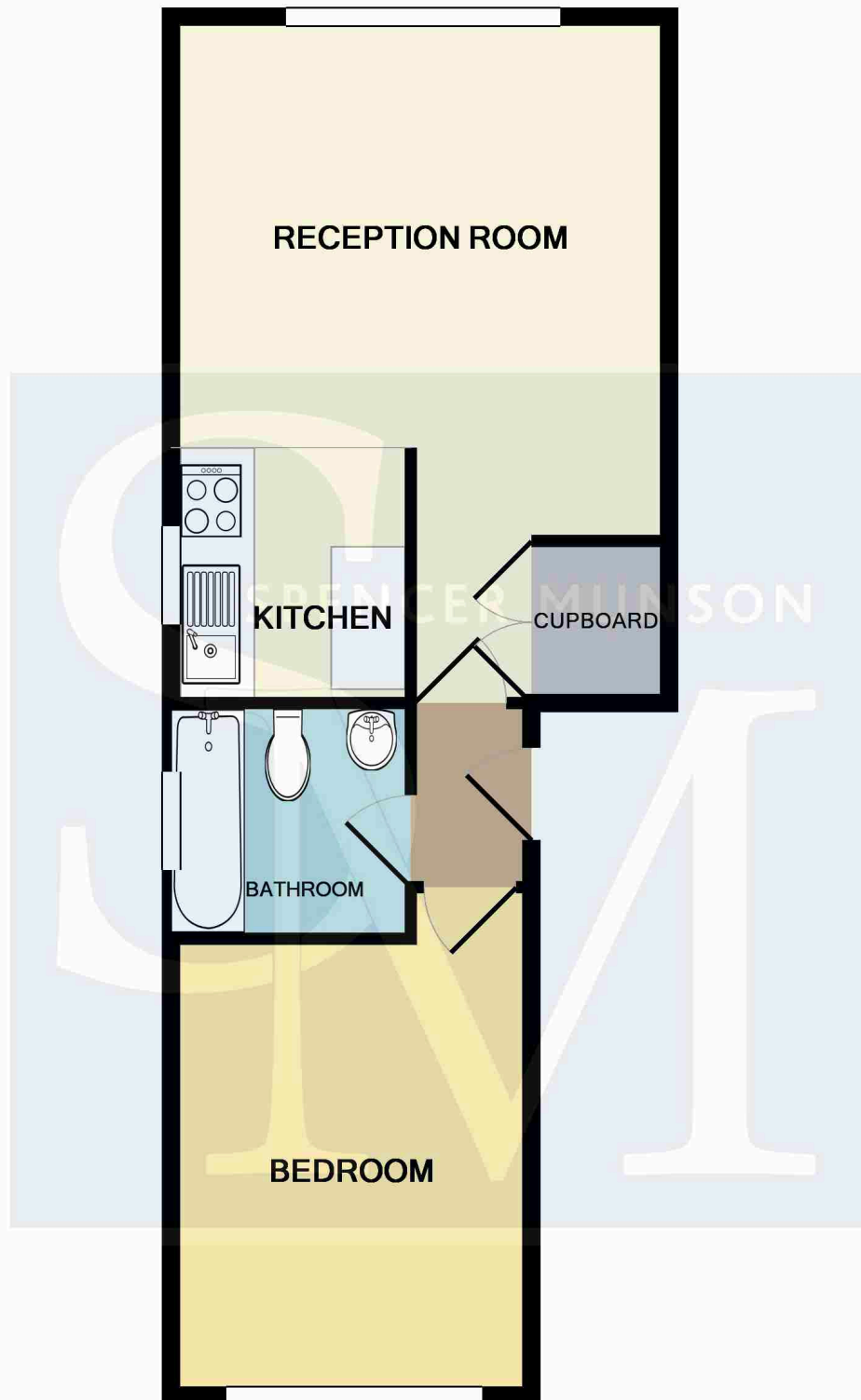


Energy Efficiency Rating



A modern one bedroom ground floor flat. Situated just off Loughton High Road with its shops bars and restaurants, benefiting from; an open plan fitted kitchen with polished wooden floor leading on to the good sized lounge, a large double bedroom and modern bathroom with overhead shower. Further benefits include electric heating and it is within walking distance from Loughton Central Line tube Station. Available 12th June on an unfurnished basis. Secure underground parking space. EPC Rating : D

Van Ryne House, Loughton IG10



Whilst every attempt has been made to ensure the accuracy of the floor plan contained here, measurements of doors, windows, rooms and any other items are approximate and no responsibility is taken for any error, omission, or mis-statement. This plan is for illustrative purposes only and should be used as such by any prospective purchaser. The services, systems and appliances shown have not been tested and no guarantee as to their operability or efficiency can be given

Made with Metropix ©2016

Disclaimer

These particulars are intended to give a fair and substantially correct overall description for the guidance of intending tenants/purchasers and do not constitute an offer or part of a contract. Prospective tenants/purchasers and/or lessees should seek their own professional advice. All descriptions, dimensions, reference to condition, fixtures, fittings and necessary permissions for use and occupation and other details are given in good faith and are

believed to be correct. However, intending tenants/purchasers should not rely on them as statements or representations of fact, but must satisfy themselves by inspection or otherwise as to the correctness of each of them. Fixtures and fittings shown in pictures and on viewings may well not be included in any tenancy/sale and any prospective tenant/purchaser must clarify this for themselves. All measurements and floorplans are approximate and produced as a guide in good faith.