



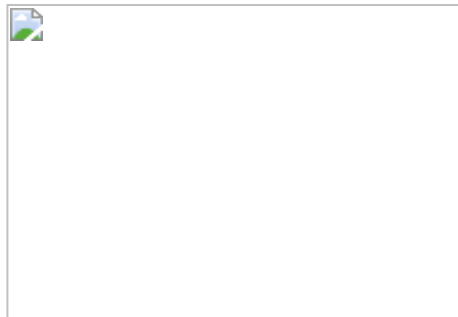
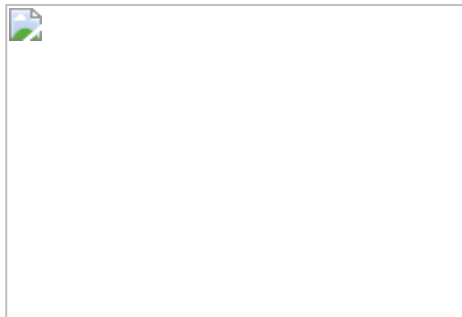
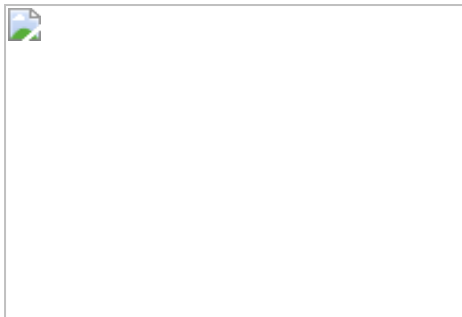
WHERE STANDARDS MATTER

Spencer Munson
128 High Road
Loughton IG10 4BE

Tel: 020 8502 2222

loughton@spencermunson.co.uk
Website: spencermunson.co.uk





Tewkesbury Close, Loughton, IG10

**** 2 BEDROOM MODERN HOUSE ** Will be NEWLY DECORATED & CARPETED THROUGHOUT ****
Walking distance of Loughton shops and station **** ** Parking ** ** Close to schools ** ** Garden**
**** ** Gas Central heating ** ** Double Glazed ** ** UNFURNISHED ** ** AVAILABLE 5th June ****
EPC rating: C & Cou



Rent: 11750 Monthly

Tewkesbury Close, Loughton IG10

Lounge



Kitchen/diner



Dining area



Bedroom One



Bedroom Two

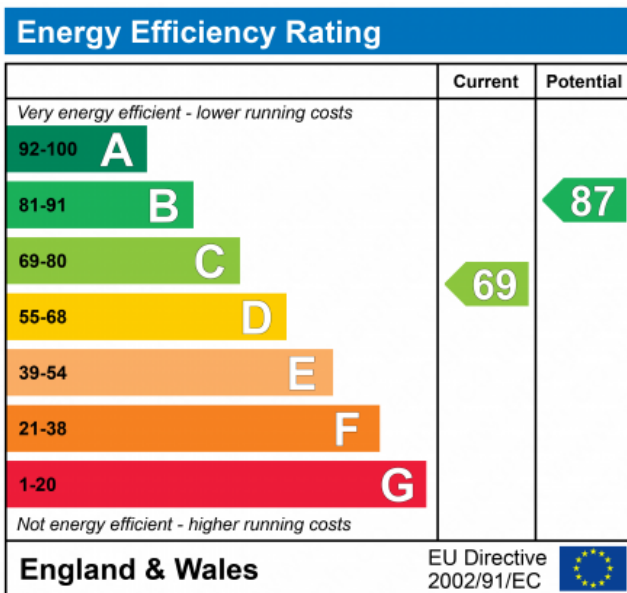


Bathroom



Tewkesbury Close, Loughton IG10

**Exterior
Garden**



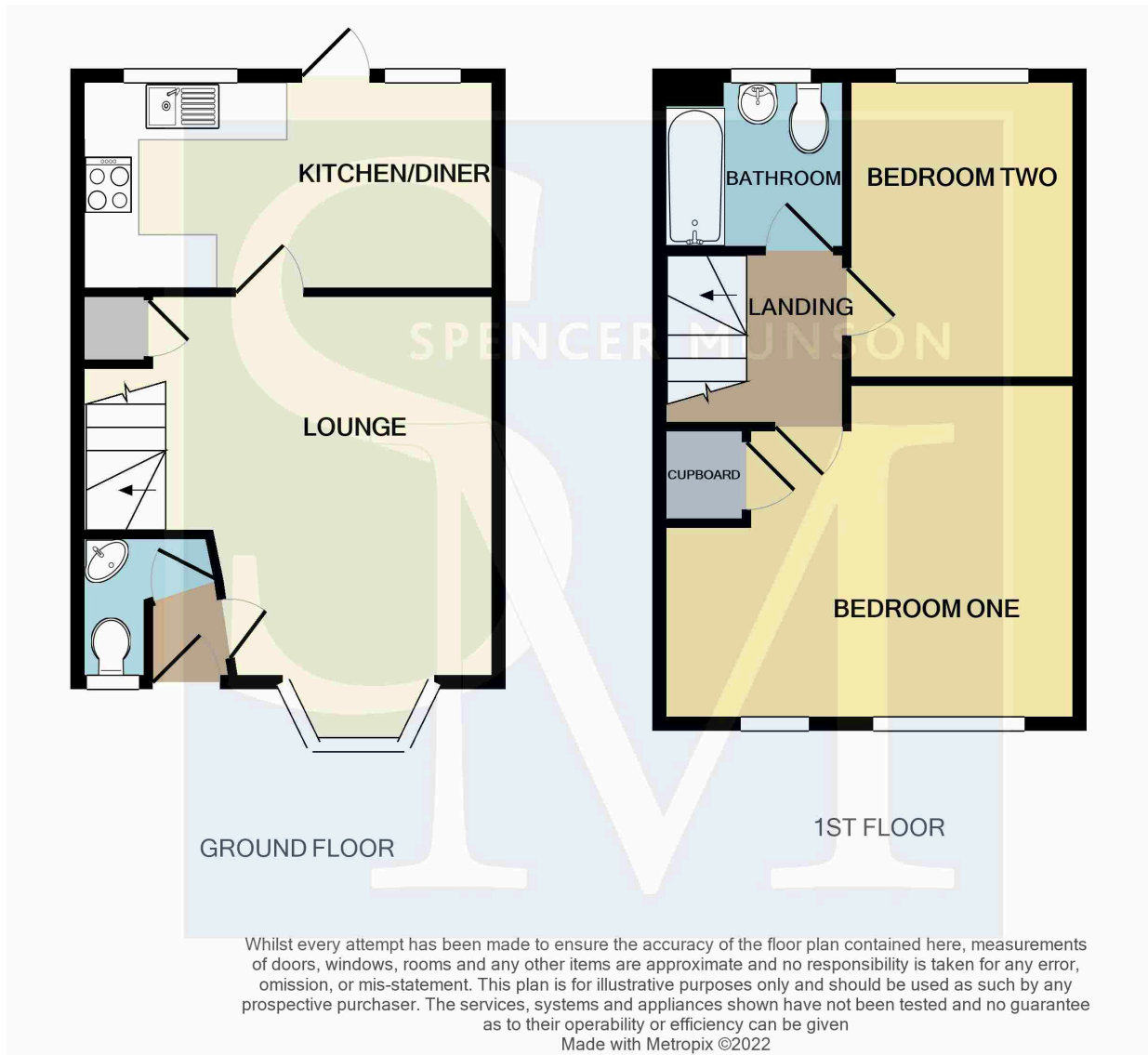
Double glazing

Gas fired central heating

A modern two bedroom house situated on the popular Hanbury Park development which is only a 10 minute walk to Loughton Central Line station, with direct access to Stratford (Westfield shopping and the Olympic Park) and onto The City and West End of London. It is also a short walk from Loughton High Road with its supermarkets, bars, restaurants and shops and further benefiting from good vehicular access to the Epping Forest Retail Park and Junction 5 of the M11 and M25 at Waltham Abbey. The property has a kitchen/diner with

appliances, lounge, cloakroom/wc, two double bedrooms, first floor bathroom , gas fired central heating, double glazing and one allocated parking space. The property is being offered unfurnished and is AVAILABLE 5th June! .
EPC rating: C and Council Tax band: D

Tewkesbury Close, Loughton IG10



Disclaimer

These particulars are intended to give a fair and substantially correct overall description for the guidance of intending tenants/purchasers and do not constitute an offer or part of a contract. Prospective tenants/purchasers and/or lessees should seek their own professional advice. All descriptions, dimensions, reference to condition, fixtures, fittings and necessary permissions for use and occupation and other details are given in good faith and are believed to be correct. However, intending tenants/purchasers should not rely on them as statements or representations of fact, but must satisfy themselves by inspection or otherwise as to the correctness of each of them. Fixtures and fittings shown in pictures and on viewings may well not be included in any tenancy/sale and any prospective tenant/purchaser must clarify this for themselves. All measurements and floorplans are approximate and produced as a guide in good faith.