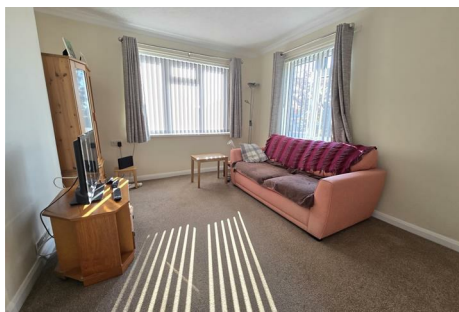




CHAFFERS
ESTATE AGENTS



19 Ambrose Close

Bradford Abbas, Sherborne, DT9 6RL

Set in a central position of a popular village and offered to the market in move-in condition, this quaint bungalow offers the perfect opportunity to downsize or get onto the property ladder!

Offers Over £200,000 Freehold

Council Tax Band: B

19 Ambrose Close

Bradford Abbas, Sherborne, DT9 6RL



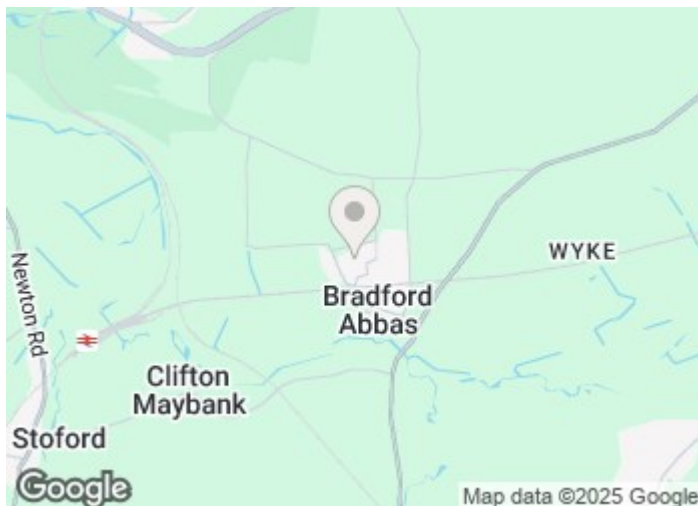
- Move-In Condition
- Bungalow
- Village Location
- Walking routes from Doorstep
- Low Maintenance
- Quiet Location

Description:

Set within the ever-popular village of Bradford Abbas which is nestled between the popular towns of Sherborne and Yeovil, this quaint two bedroomed bungalow is offered to the market in move-in condition. Internally, there are two spacious bedrooms, a light-filled sitting room, spacious kitchen with room for appliances and bathroom with shower. Externally the property offers ample parking, a Southerly Facing Garden which is partly enclosed with the ability for full enclosure.

Location:

Bradford Abbas is a quaint village in Dorset. The village is 3 miles south-east of Yeovil and 5 miles south-west of Sherborne, train stations can be found in both Yeovil and Sherborne with the nearest railway being located in Thornford. The primary school in Bradford Abbas, St Mary's CE Primary School, is situated in the village center. The secondary school that most of its pupils attend is The Gryphon School in Sherborne. Bradford Abbas Primary School is also part of the Sherborne Area Schools' Trust. The village itself has a wonderful community atmosphere and offers a great pub, The Rose & Crown. With bus services to this location being in short supply, the village hall will be trialing a monthly bus to Sherborne to help its residents.



Directions

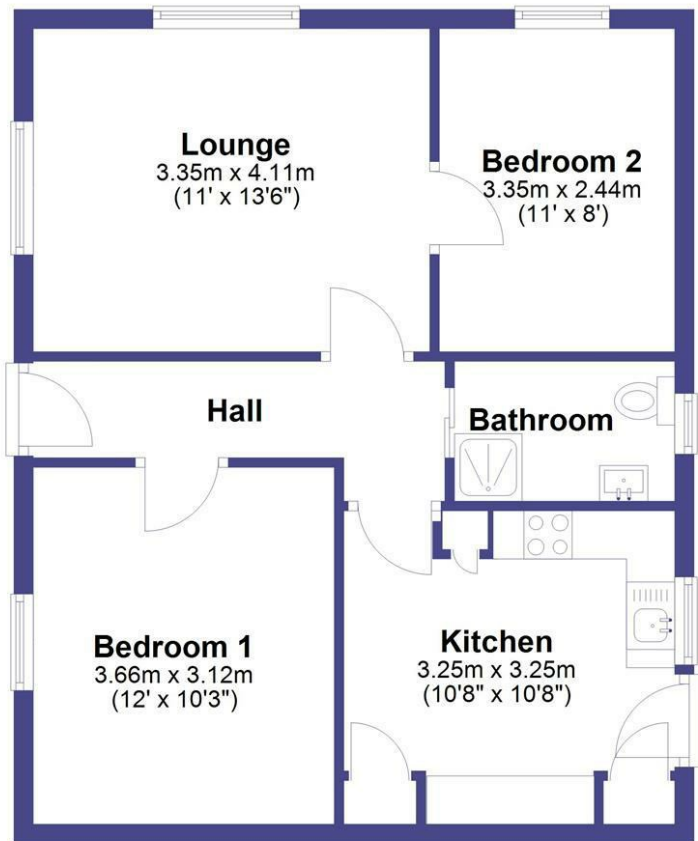
Postal Address: 19, Ambrose Close Bradford Abbas, Sherborne, DT9 6RL What3Words: ///bits.tennis.cars





Floor Plan

Ground Floor



Total area: approx. 54.2 sq. metres (582.9 sq. feet)

These particulars, whilst believed to be accurate are set out as a general outline only for guidance and do not constitute any part of an offer or contract. Intending purchasers should not rely on them as statements of representation of fact, but must satisfy themselves by inspection or otherwise as to their accuracy. No person in this firms employment has the authority to make or give any representation or warranty in respect of the property.

