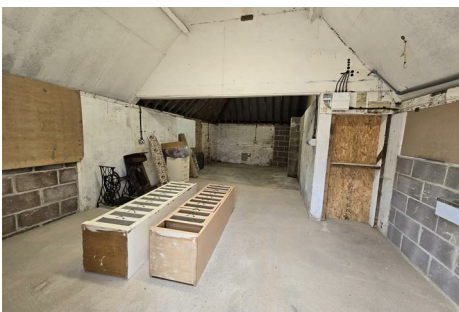




**CHAFFERS**  
ESTATE AGENTS



## Godmans Farm

Farrington, Blandford Forum, DT11 8RA

A light and dry storage unit which has recently been used for the refurbishment of antique furniture. The property is on its own electric meter and can be rented for long or short term usage. Parking is freely available and modifications to the unit are also negotiable.

**£200 PCM**

Council Tax Band: Exempt

# Godmans Farm

Farrington, Blandford Forum, DT11 8RA



## Description Unit 1

A light and dry storage unit which has recently been used for the refurbishment of antique furniture. The property is on its own electric meter and can be rented for long or short term usage. Parking is freely available and modifications to the unit are also negotiable.

This unit also offer a water point.

There are two other storage options available, register your information with Chaffers to find out more.



## Directions





# Floor Plan

These particulars, whilst believed to be accurate are set out as a general outline only for guidance and do not constitute any part of an offer or contract. Intending purchasers should not rely on them as statements of representation of fact, but must satisfy themselves by inspection or otherwise as to their accuracy. No person in this firm's employment has the authority to make or give any representation or warranty in respect of the property.

Market Place, Sturminster Newton, Dorset, DT10 1AS  
Tel: 01258 473900 Email: [sturminster@chaffersstateagents.co.uk](mailto:sturminster@chaffersstateagents.co.uk) [www.chaffersstateagents.co.uk](http://www.chaffersstateagents.co.uk)

Energy Efficiency Rating		Current	Potential
<i>Very energy efficient - lower running costs</i>			
(92 plus) <b>A</b>			
(81-91) <b>B</b>			
(69-80) <b>C</b>			
(55-68) <b>D</b>			
(39-54) <b>E</b>			
(21-38) <b>F</b>			
(1-20) <b>G</b>			
<i>Not energy efficient - higher running costs</i>			
<b>England &amp; Wales</b>		EU Directive 2002/91/EC	