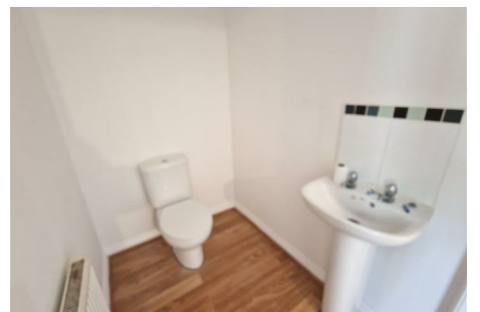




CHAFFERS
ESTATE AGENTS



40 Drovers

Old Market Walk, Sturminster Newton, DT10 1QY

A recently redecorated THREE bedroom terraced house close to Sturminster Newton town centre.

£1,000 PCM

Council Tax Band: C

40 Drovers

Old Market Walk, Sturminster Newton, DT10 1QY



DESCRIPTION

ENTRANCE HALL ~ CLOAKROOM ~
KITCHEN ~ GOOD SIZE LIVING ROOM
~ THREE BEDROOMS ~ FAMILY
BATHROOM ~ PATIO AREA

Leisure Centre. The Exchange is an award winning multi-purpose building offering a community/arts centre. Coarse fishing in the River Stour. Blandford 9 miles, Sherborne 12, Yeovil 17, Dorchester 20, Bournemouth and the South Coast 27 miles. Gillingham 10 miles has a mainline railway station. The A30 is 8 miles, and the A303 approximately 15 miles.

Sturminster Newton is an interesting Old Market Town and is the most centrally sited of North Dorset's five principal towns, standing halfway between Blandford Forum and Sherborne in a most delightful setting on the banks of the River Stour and in the heart of the beautiful Blackmore Vale. There are a wide range of Shops, a Primary School and a Secondary School, Church, Medical Centre and Health Clinic, NHS Dentist, Private Dentist and a modern



Directions



Floor Plan

These particulars, whilst believed to be accurate are set out as a general outline only for guidance and do not constitute any part of an offer or contract. Intending purchasers should not rely on them as statements of representation of fact, but must satisfy themselves by inspection or otherwise as to their accuracy. No person in this firm's employment has the authority to make or give any representation or warranty in respect of the property.

Market Place, Sturminster Newton, Dorset, DT10 1AS
Tel: 01258 473900 Email: sturminster@chaffersstateagents.co.uk www.chaffersstateagents.co.uk

