



**CHAFFERS**  
ESTATE AGENTS



## Cookswell

Shillingstone, Blandford Forum, DT11 0QZ

A Contemporary, light and airy apartment located in the sought after village of Shillingstone, Dorset. Located within a short distance of the village amenities this apartment offers stylish contemporary living throughout and has the huge benefit of Allocated parking. EPC Rating - D

**Asking Price £125,000 Leasehold**

Council Tax Band: A

# Cookswell

Shillingstone, Blandford Forum, DT11 0QZ

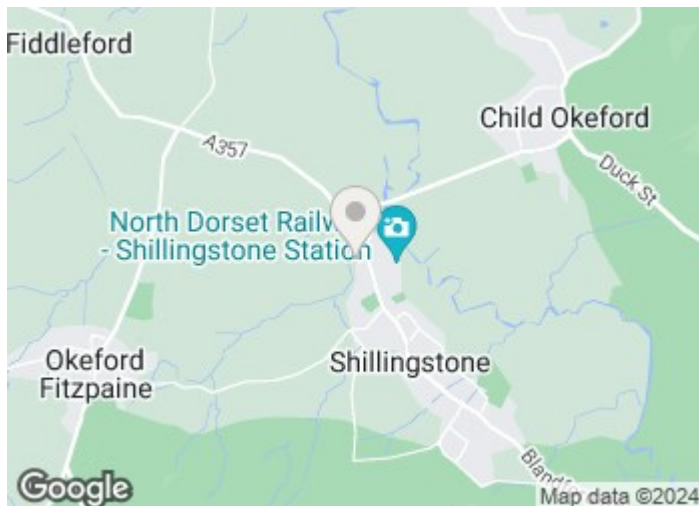


- Modern Apartment
- Very Well Presented Throughout
- Fully Fitted Kitchen
- Allocated Parking
- Double Glazing
- Light and Airy Apartment
- Great Village Location
- Character Features

## DESCRIPTION

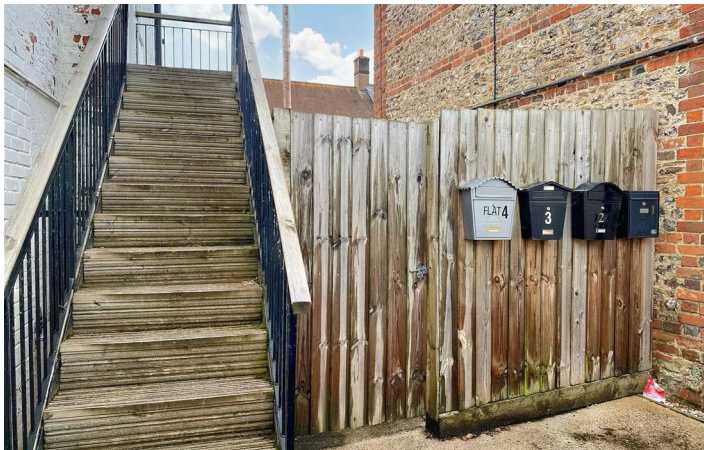
## LOCATION:

## ADDITIONAL INFORMATION



**Directions**

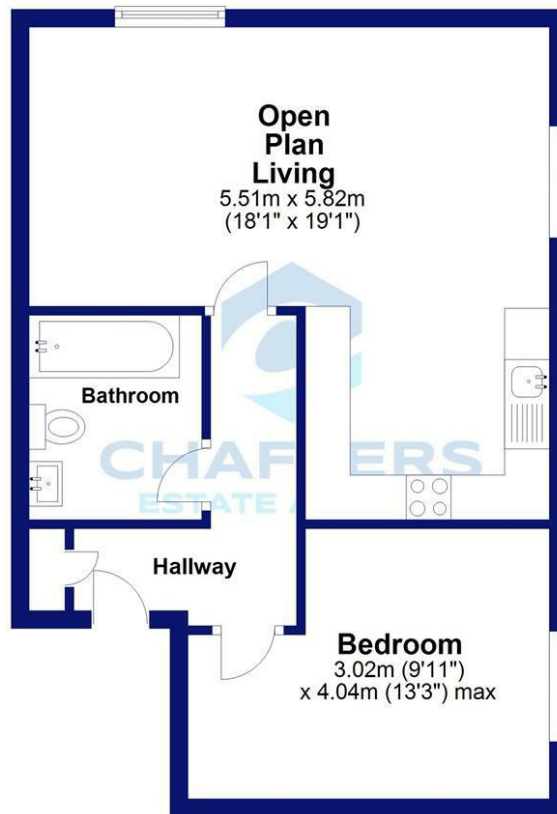




# Floor Plan

## Ground Floor

Approx. 46.8 sq. metres (503.8 sq. feet)



Total area: approx. 46.8 sq. metres (503.8 sq. feet)

Not to scale. For illustration purposes only. Plan indicates property layout only.  
Plan produced using PlanUp.

These particulars, whilst believed to be accurate are set out as a general outline only for guidance and do not constitute any part of an offer or contract. Intending purchasers should not rely on them as statements of representation of fact, but must satisfy themselves by inspection or otherwise as to their accuracy. No person in this firm's employment has the authority to make or give any representation or warranty in respect of the property.

Market Place, Sturminster Newton, Dorset, DT10 1AS

Tel: 01258 473900 Email: [sturminster@chaffersstateagents.co.uk](mailto:sturminster@chaffersstateagents.co.uk) <https://chaffersstateagents.co.uk/>

Energy Efficiency Rating		Current	Potential
Very energy efficient - lower running costs			
(92 plus) <b>A</b>			
(81-91) <b>B</b>			
(69-80) <b>C</b>			
(55-68) <b>D</b>		56	56
(39-54) <b>E</b>			
(21-38) <b>F</b>			
(1-20) <b>G</b>			
Not energy efficient - higher running costs			
<b>England &amp; Wales</b>		EU Directive 2002/91/EC	