

BRYN PARCIAU CRICCIETH

LL52 0AZ



**16 O GARTREFI
CYFOES NEWYDD**

Tom Parry
01766 512505
tomparry.co.uk

**16 CONTEMPORARY
NEW HOMES**

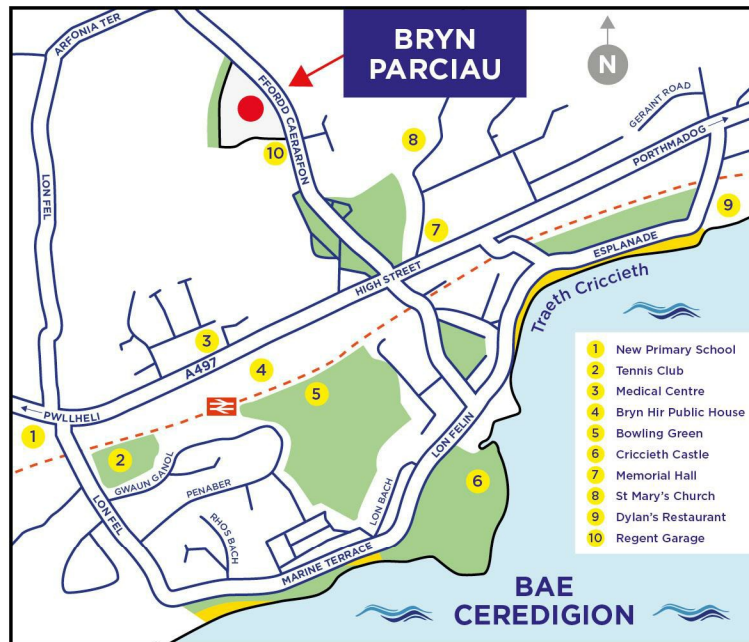
PLOT 1 BEDROOMS · 4 · YSTAFELL WELY £550,000

Y Datblygiad

Mae Criccieth yn dref ddeniadol a hanesyddol. Mae'n sefyll ar arfordir deheuol Gwynedd sy'n enwog am ei draethau godidog a'i lwybrau cerdded arfordirol.

Datblygiad o 23 o gartrefi yw Bryn Parciau ac mae wedi'i leoli ar safle oddeutu 500 metr uwchlaw canol tref Criccieth. Mae Afon Cwrt yn llifo ar hyd ochr ddwyreiniol y datblygiad a thir fferm agored sydd tua'r gorllewin.

- Bydd y tai yn cyflenwi angen am gartrefi newydd a modern gyda 16 ty i'w gwerthu ar y farchnad agored ynghyd 7 o dai fforddiadwy ar gyfer pobl leol.
- Mae'r cartrefi yn gyfuniad o dai 3 a 4 ystafell wely ac maent wedi'u cynllunio i'w hadeiladu i safon uchel gydag inswleiddio rhagorol, gwydro dwbl a gwres o dan y llawr.
- Bydd y ceginau yn cynnwys unedau ac offer integredig.
- Ystafelloedd eang gyda ffenestri mawr a fydd yn rhoi goleuni gwych.
- Lle parcio i ddau gar a garej sylweddol ynghyd â gerddi lawnt yn y blaen a'r cefn.



The Development

Criccieth is an attractive and historic town located on the picturesque southern coastline of Gwynedd famed for its pristine beaches and coastal walks.

Bryn Parciau is a development of 23 houses located on an elevated site lying about 500 metres from Criccieth town centre. Afon Cwrt runs along the eastern side of the development with open farmland to the west.

- The houses will provide much needed new and modern homes - 16 homes to be sold in the open market, together with seven houses which will be for local occupation and use.
- The homes will be a combination of three and four bedroom houses architecturally designed to be built to an excellent specification including high insulation levels, double glazing and underfloor heating.
- The kitchens will include integrated units and appliances.
- All of the rooms are spacious, with large windows which will ensure an uplifting sense of lightness.
- Two car parking spaces and a well proportioned garage and with lawned gardens to the front and rear.
- Adjoining the western boundary of the site will be a landscaping zone planted with native grasses and trees.

Scheme Layout

Type A - Four bedrooms

Plot 1 - Available

- Plot 4 - Sold
- Plot 6 - Reserved
- Plot 8 - Sold
- Plot 9 - Reserved

Type B - Four bedrooms

- Plot 5 - Reserved
- Plot 7 - Available**

Type C - Three bedrooms

- Plot 13 - Not yet available
- Plot 14 - Not yet available
- Plot 15 - Available**
- Plot 16 - Available**

Type C1 - Three bedrooms

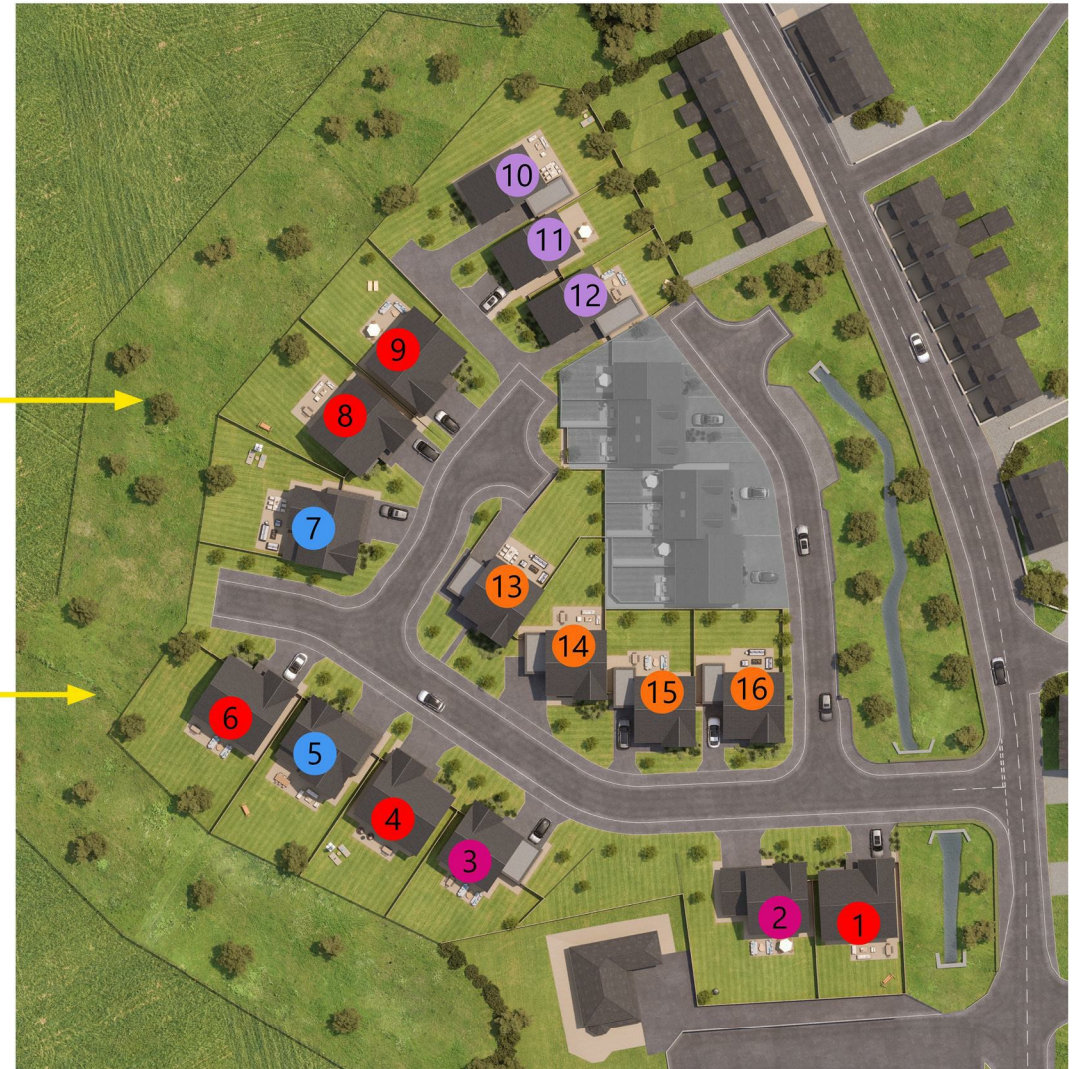
- Plot 2 - Available**
- Plot 3 - Reserved

Type D - Three bedrooms

- Plots 10, 11 and 12 - Not yet available



Biodiversity landscaping zone



Specification

Kitchen

- Contemporary fitted kitchens with stone work surface and upstand
- Under wall unit LED lighting
- Undermounted stainless steel sink with brushed steel mixer tap
- A range of integrated appliances to include:
 - Fridge/freezer
 - Induction hob
 - Hidden extractor
 - Multifunction single oven
 - Combi oven microwave
 - Dishwasher

Heating and Hot Water

- Underfloor heating throughout ground floor
- Radiators to first floor
- Efficient boiler

Bathroom/en-suite

- Contemporary white sanitary ware
- Chrome mixer tap
- Wall mounted chrome thermostatic shower head to cubicle
- Adjustable height shower mixer fitted above bath
- Ceramic wall and floor tiling
- Fitted bathroom mirror above sink
- Floor mounted WC with soft close toilet seat, concealed cistern and dual flush plate
- Low level shower tray
- Chrome heated towel rail

Utility

- Plumbing and space for washing machine
- Sink (where indicated on floor plan)



Electrical Fittings

- USB point to living space and bedrooms
- White low profile sockets and switches
- Brushed sockets and switches above worktop to kitchen
- Shaver socket to bathroom and en-suite
- Mixture of LED lighting and pendants

Security

- Sprinkler system installed to Welsh legislation and building regulation standards
- Multi-point locking doors that meet Secure by Design standards
- Smoke and heat detectors

External Finishes

- Lawn front and rear gardens
- Slabs to pathways and patios
- Electric garage doors, power and light
- External double socket and water tap
- External light to front and rear of property

Peace of Mind

- 10 year NHBC warranty

Type A

Plot 1 - £525,000

Plot 4 - Sold

Plot 6 - £700,000

Plot 8 - Sold

Plot 9 - Reserved

GROSS INTERNAL AREA

House	1,970 sq ft
Garage (Integral)	205 sq ft
Total	2,175 sq ft



GROUND FLOOR

Kitchen/Dining/Snug Overall
10.36m x 3.72m 34' 0" x 12' 3"

Living
6.10m x 4.00m 20' 00" x 13' 1"

FIRST FLOOR

Bedroom 1
4.00m x 4.10m 13' 2" x 13' 6"

En-suite & Wardrobe
4.00m x 2.20m 13' 2" x 7' 4"

Bedroom 2
3.82m x 4.10m 12' 6" x 13' 6"

En-suite & Wardrobe
3.80m x 2.20m 12' 8" x 7' 4"

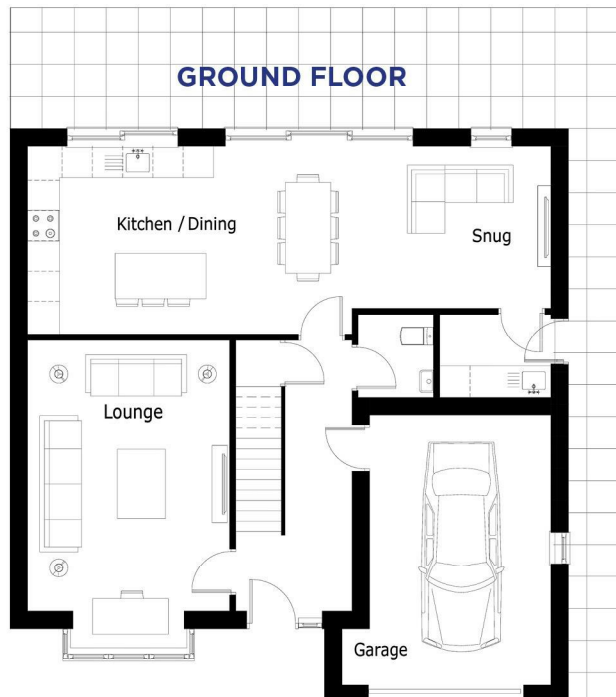
Bedroom 3
4.14m x 4.40m 13' 7" x 14' 5"

Bedroom 4
4.00m x 3.18m 13' 2" x 10' 5"

Bathroom (Family)
2.3m x 2.8m 7' 6" x 9' 2"

GARAGE

3.6m x 5.3m 11' 7" x 17' 5"



FIRST FLOOR



Rhys Evans Cyf – Datblygiadau Blaenorol

Mae Rhys Evans Cyf yn adeiladwr a datblygwr tai profiadol. Mae'r cwmni wedi bod yn geithredu am dros bymtheng mlynedd yng Nghriccieth, Porthmadog a'r cylch.



Cae Eithin, Morfa Bychan
A development of 10 homes completed in August 2018



Gerddi Madryn, Chwilog
A development of 15 houses completed in June 2022

Rhys Evans Cyf – Previous Developments

Rhys Evans Cyf is a well established and experienced contractor and housing developer. The company has been active for over fifteen years in the Criccieth, Porthmadog and surrounding area.



07867 634063



Tom Parry
01766 512505
tomparry.co.uk