

west

THE PROPERTY CONSULTANCY

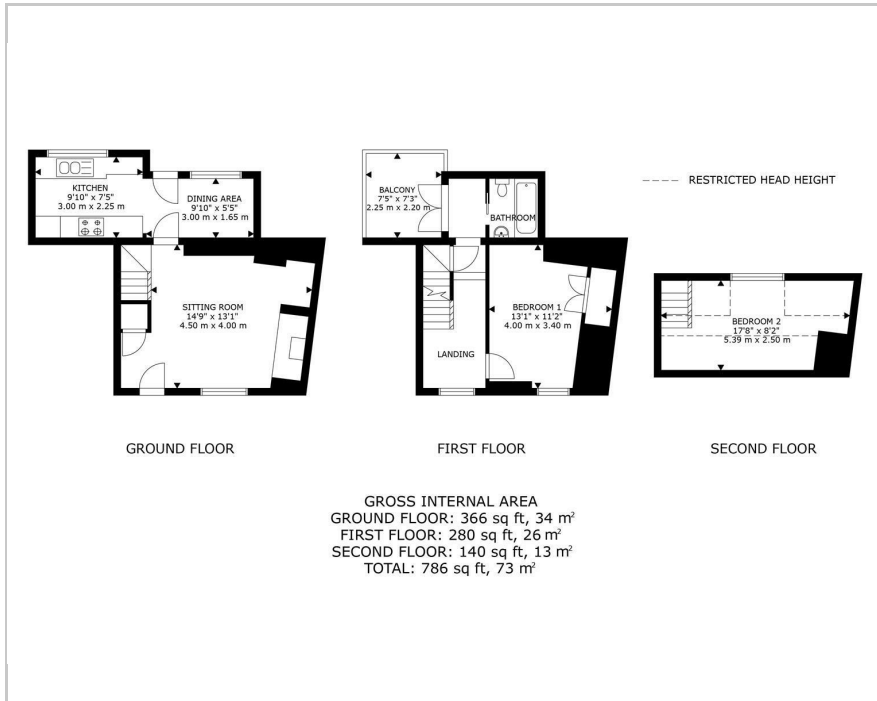


Chambers Cottage High Street, Nr. Witney, OX29 4HB

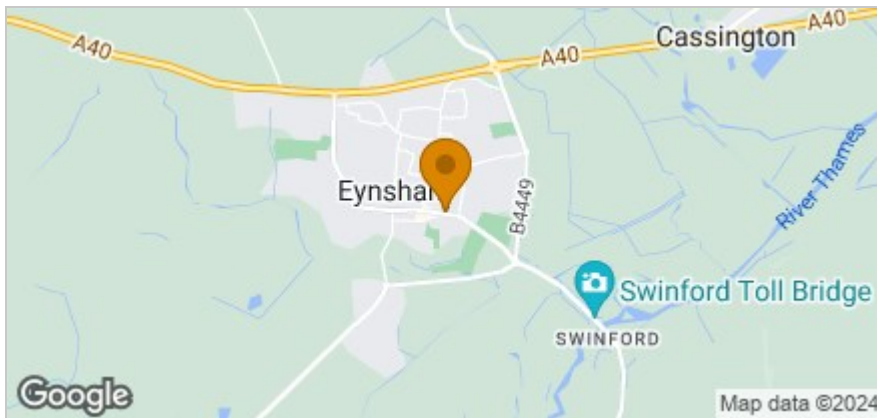
Price Guide £295,000



## Floor Plan



## Area Map



## Accommodation

- Atmospheric heart of Eynsham location
- A restored period stone cottage
- No onward chain therefore immediate vacant possession
- Very attractive reception room with open fireplace
- Two double bedrooms.
- Vaulted beamed master bedroom
- Roof terrace
- Walk to a wonderful nearby coffee house.
- Excellent village restaurants and pubs
- Thames path walks on the edge of the village

## Viewing

Please contact our Oxford Lettings Office on 01865 510000 if you wish to arrange a viewing appointment for this property or require further information.

## Energy Efficiency Graph

Energy Efficiency Rating		Current	Potential
Very energy efficient - lower running costs			
(92 plus)	A		
(81-91)	B		
(69-80)	C		
(55-68)	D		
(39-54)	E		
(21-38)	F		
(1-20)	G		
Not energy efficient - higher running costs			
England & Wales		EU Directive 2002/91/EC	



These particulars, whilst believed to be accurate are set out as a general outline only for guidance and do not constitute any part of an offer or contract. Intending purchasers should not rely on them as statements of representation of fact, but must satisfy themselves by inspection or otherwise as to their accuracy. No person in this firm's employment has the authority to make or give any representation or warranty in respect of the property.

216 Banbury Road, Oxfordshire, OX2 7BY

Tel: 01865 510000 Email: oxford@west-tpc.co.uk <https://www.west-tpc.co.uk>