



The Tower House





A UNIQUE AND STYLISH TOWN HOUSE IN A 12 ACRE GATED PARK.

ST GEORGE'S MANOR

Oxford City centre c. 3.2 miles Oxford Station c.3.4 miles

Set in the iconic converted St George's Manor, within private 12 acre gated grounds, one of the few stylish Grade II Listed 4 bedroom town houses. At the heart of this house is a substantial "social" kitchen space with luxurious kitchen architecture by renowned Bulthaup. 4 double bedrooms, 2 bathrooms, 2 reception rooms, There are attractive courtyard gardens facing south to the rear of the building overlooking one of the attractive garden squares. There are two parking spaces.

(TOTAL FLOOR AREA c.1480 sq ft / 137 sq M).

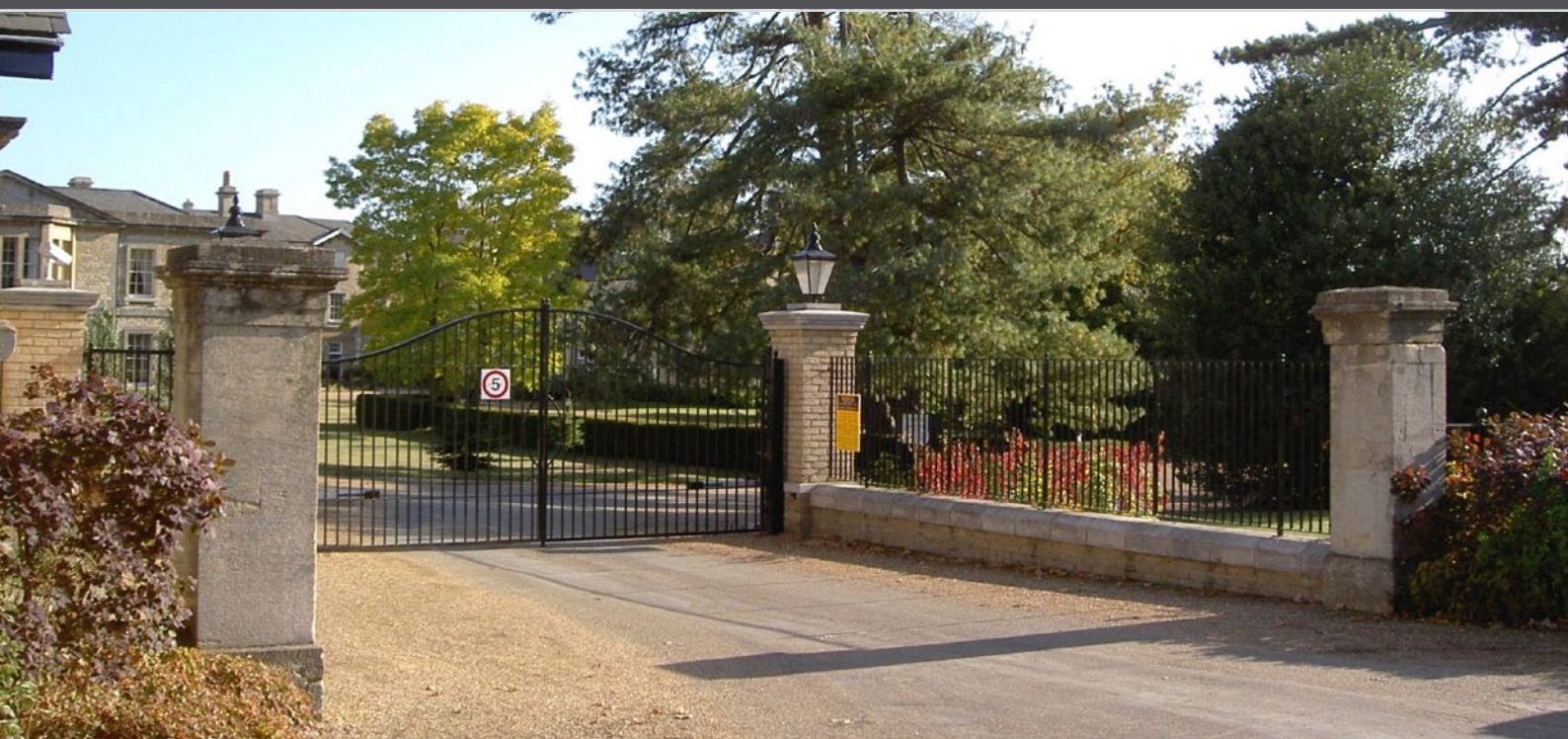
Guide Price £598,000

Contact: Gavin West

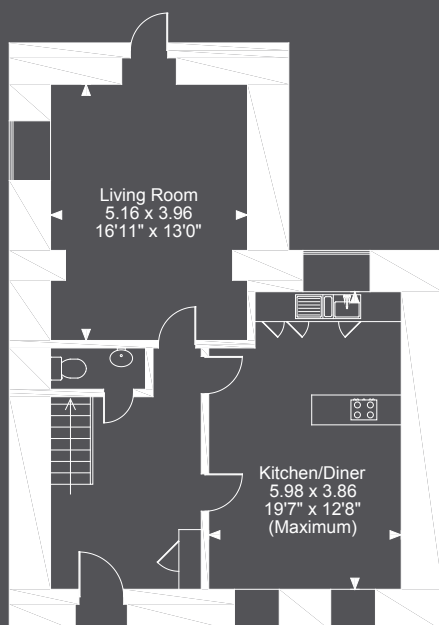
(t) 01865 510000 (e) gavin@west-tpc.co.uk

DIRECTIONS: From the Littlemore/Sandford On Thames roundabout on the Oxford Ring Road, proceed through the village of Littlemore forking right at the mini-roundabout, continue for 750 yards and on the edge of the village turn left at the lights into Armstrong Road. Turn next left into the rear gated entrance for St George's Park. Proceed through the electric gates and continue to the very top of the road and bear sharp left. Proceed to the end of Mandelbrote Drive and bear left into the parking for St George's Manor. No. 13 is found in the left hand corner of the garden square.

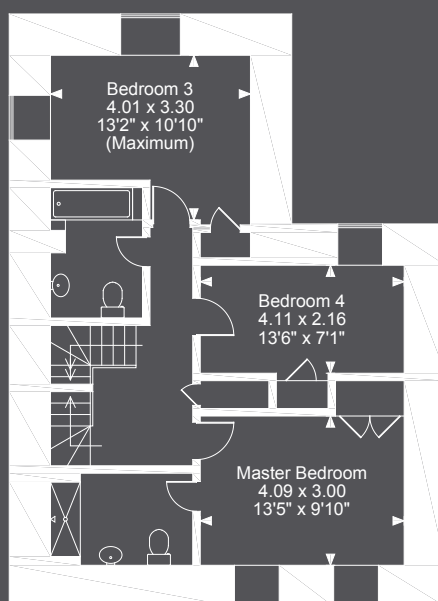
Please discuss with us any aspects which are particularly important to you before travelling to view this property. Neither these particulars, floorplans, nor oral representations, form any part of any offer or contract and their accuracy cannot be guaranteed.



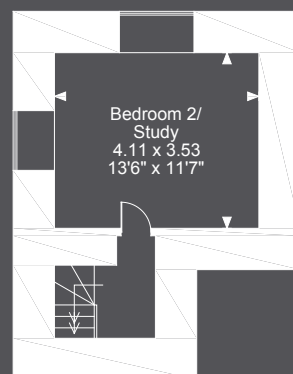
The Tower House, 13 St. Georges Manor, Mandelbrote Drive, Oxford, OX4 4TN
Approximate Gross Internal Area
1480 Sq Ft/137 Sq M



Ground Floor



First Floor



Second Floor

FOR ILLUSTRATIVE PURPOSES ONLY - NOT TO SCALE

The position & size of doors, windows, appliances and other features are approximate only.
© ehous. Unauthorised reproduction prohibited. Drawing ref. dig/8345518/SS