



ENNINGS WAY

20





PIED A TERRE IN A FIRST CLASS LOCATION

NORTH OXFORD
Summertown c. 0.3 mile
Oxford Parkway Station c.1.2 miles

Situated a short walk from Summertown and its boutique shops and restaurants, a substantial 1 bedrooms apartment with the floor area usually associated with that applied to a two bedroom property. Fully integrated contemporary kitchen, High quality floor coverings, Villeroy & Boch sanitary ware, Gas CH, Intercom, Private parking. (TOTAL FLOOR AREA: c.724 sq ft).

ASKING PRICE: £435,000

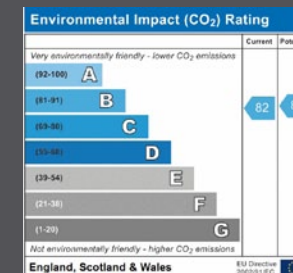
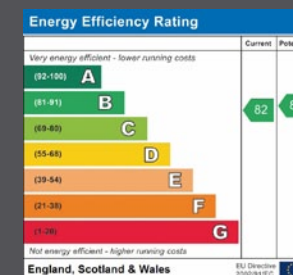
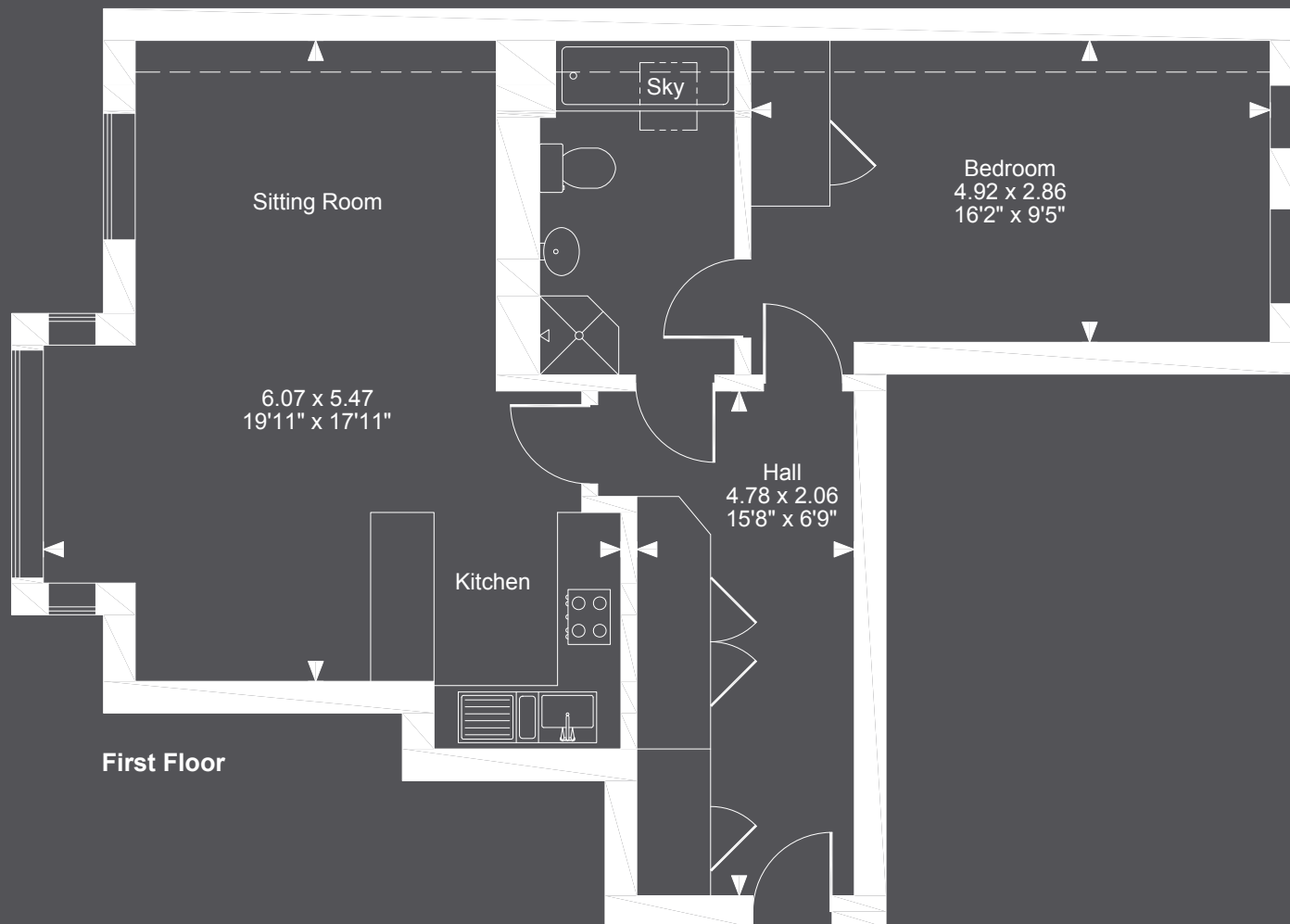
Contact: Gavin West
(t) 01865 510000 (e) gavin@butlersherborn.co.uk

DIRECTIONS: From the Wolvercote roundabout just North of Oxford take the Woodstock Road towards the city centre. Pass St Edwards School on your left and Elizabeth Jennings Way is the next turning on your right. No.11 is located in the building on the left hand corner and the apartment itself is set to the rear of the building and the private car parking is also located here.

Please discuss with us any aspects which are particularly important to you before travelling to view this property. Neither these particulars, floorplans, nor oral representations, form any part of any offer or contract and their accuracy cannot be guaranteed.



11 Elizabeth Jennings Way, North Oxford, OX2 7EJ
Approximate Gross Internal Area
611 Sq Ft/57 Sq M



Butler
Sherborn

OXFORD | CITY BUSINESS

Gavin West
T: 01865 510000
E: oxford@butlersherborn.co.uk
butlersherborn.co.uk

FOR ILLUSTRATIVE PURPOSES ONLY - NOT TO SCALE

The position & size of doors, windows, appliances and other features are approximate only.

□ □ □ □ Denotes restricted head height

© ehouse. Unauthorised reproduction prohibited. Drawing ref. dig/8317615/LPV