

COMING SOON

TO LET

Flat A, 255 Marston Road, Oxford, OX3 0EN

£1,695 PCM



- Located opposite an 'Eco' park
- A very stylish duplex apartment
- Integrated kitchen
- AVAILABLE FROM END OF MAY
- 'Gastro' pub within a short walk
- Small contemporary building
- Dual aspect 'social' space
- 2 Bedrooms + 2 Shower Rooms
- University Parks c.0.4 mile walk
- Corner shop 50 metres

HEADINGTON / MARSTON BORDER

City Centre c.1.2 mile walk, University Parks c.0.4 mile walk Bus to London c.1 mile. Oxford Station c.1.4 miles

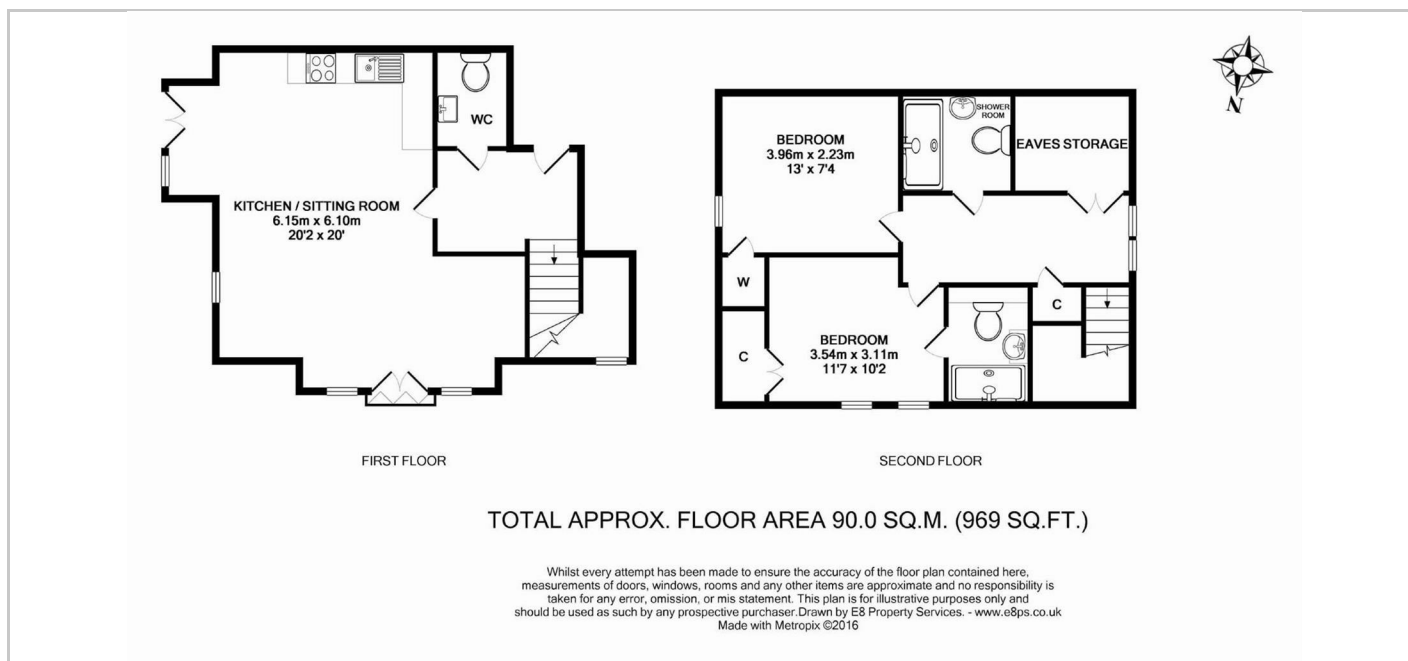
Located opposite a designated 'Eco' park, a relatively recently constructed small contemporary apartment building, in which we are offering a stylish duplex apartment of very good scale. The property offers an attractive open plan dual aspect 'social' space and fully integrated contemporary kitchen. There are 2 bedrooms and 2 bath / shower rooms. 0.4 mile walk through unspoilt green space to the beautiful University Parks and 'Mesopotamia' set between the River Cherwell and River Isis. Two Co-Op stores, a corner shop and a popular 'Gastro' pub within walking distance. AVAILABLE END OF MAY. (TOTAL FLOOR AREA: c. 969 sq ft / 90 m²)

QUOTING RENT: £1,695pcm

UNFURNISHED / OXFORD CITY COUNCIL - TAX BAND C

THE PROPERTY

SET AMIDST THE CITY'S MAIN PARKS - A STYLISH 2 BEDROOM APARTMENT 15 MINUTES WALK FROM BROAD STREET



SITUATION

Contact: Gavin West

(t) 01865 510000 (e) gavin@west-tpc.co.uk

Directions

From the St Clements roundabout at the bottom end of Oxford's High Street, take the London Road turning towards Headington. Proceed to the London Rd / Marston Rd junction traffic lights and turn left in to the Marston Road. Pass the iconic Islamic Studies Centre building on your left and continue on passing the 'Up In Arms' gastro pub on your left and take the next left turning in to Edgeway Road and the 255 Marston Rd Apartments will be found on the corner with the entrance being found on Edgeway Road. WHAT3WORDS Co-Ordinate:- ///purely.perky.shield

216 Banbury Road, Oxfordshire, OX2 7BY

Tel: 01865 510000 Email: oxford@west-tpc.co.uk <https://www.west-tpc.co.uk>