

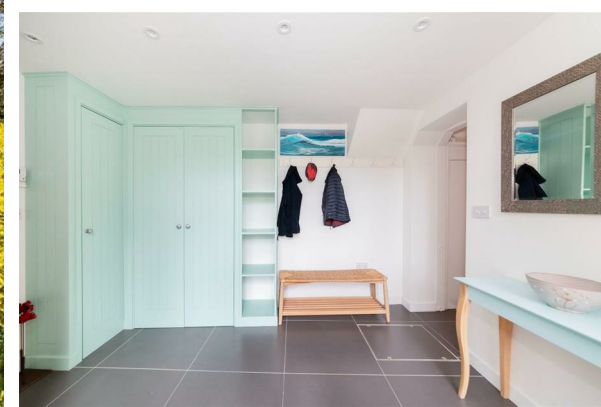
west

THE PROPERTY CONSULTANCY

TO LET

Jasmine Cottage Main Street, East Hanney, Wantage, Oxfordshire, OX12 0JF

£2,295 Per Calendar Month



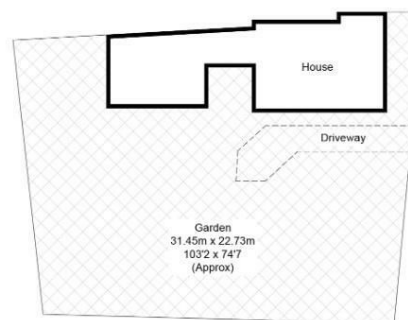
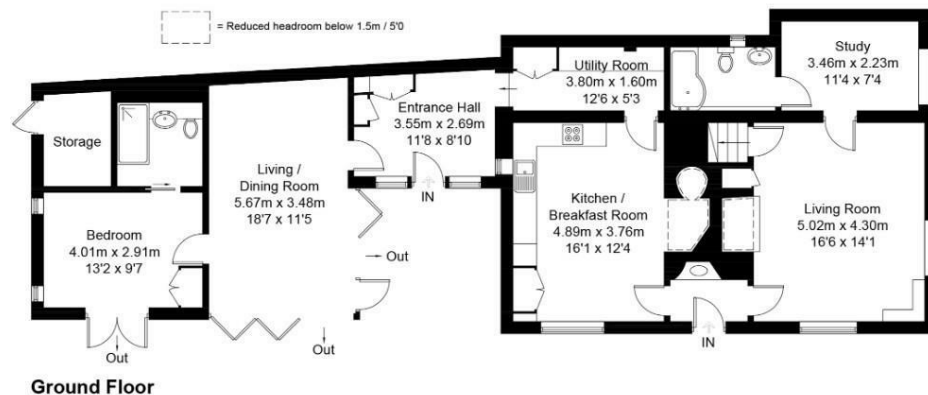
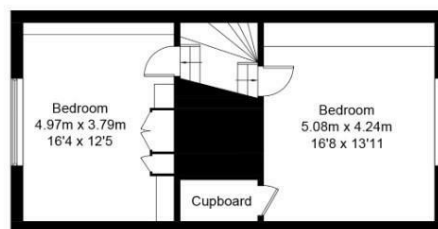
THE PROPERTY

A very beautifully restored detached period house set in special peaceful gardens in the heart of the village.



Main Street, OX12

Approximate Gross Internal Area = 169.6 sq m / 1825 sq ft
Garden / Driveway Area = 587.6 sq m / 6325 sq ft



Floor plan produced in accordance with RICS Property Measurement Standards.
© Mortimer Photography. Produced for WEST - The Property Consultancy.
Unauthorised reproduction prohibited. (ID1067372)

EAST HANNEY

Oxford c.12.6 miles Abingdon on Thames c.6.6 miles Wantage c.3.8 miles

Set in very beautifully planted 0.17 acre private gardens in a peaceful location in this much coveted village in the Vale Of The White Horse south of Oxford, a detached period thatched village house that has been the subject of a detailed restoration which features a high quality part glass curtain walled contemporary wing which also provide a future proofed ground floor bedroom or (guest) suite. This special property offers 4 reception rooms, 3 beds, 2 Baths. A 'Farmhouse' style social kitchen space. In all, a very rare find indeed. A very well connected and serviced village with a great sense of community. AVAILABLE NOW (TOTAL FLOOR AREA: c.1,825 sq ft / 170m²)

QUOTING RENT: £2,295pcm

- A beautifully restored period detached cottage in a charming village setting.
- Set in very special wonderfully planted 0.17 acre gardens
- 3 Beds (Inc ground floor en-suite bedroom or 'guest' suite).
- Stylish entrance and hall with laundry off.
- A real sense of arrival via a sweeping gravelled driveway.
- Featuring a contemporary pavillion style part glass walled extension
- 3 Reception rooms.
- An atmospheric farmhouse style 'social' kitchen space.
- Glass curtain walled reception room in the pavillion extension.
- The Hanneys are very well served villages

Take the A420 Swindon Road south from Oxford and after about 4.6 miles turn left at the roundabout onto the A338 towards Wantage. After 5.6 miles turn right opposite La Fontana restaurant onto Main St East Hanney (the left hand fork) Pass the Black Horse pub on your left and then look out for the thatched Jasmine Cottage on your right. What3words:///truffles.daffodils.capacity

Contact: Gavin West
(t) 01865 510000 (e) gavin@west-tpc.co.uk