

COMING SOON

TO LET

76 Bridge Street, Osney Island, Oxford, Oxfordshire, OX2 0BD

£1,800 PCM



- A very stylish recently refurbished garden flat
- AVAILABLE MAY 1st 2025
- A short walk from probably the county's best vegetarian restaurant.
- Peaceful reception room at the heart of the flat
- A newly installed fully equipped kitchen / dining space
- Nicely detailed Bath / shower room
- An atmospheric private 'sun trap' landscaped garden
- Oxford Railway Station c. 0.22 mile
- Oxford City Centre c.0.78 mile
- A very rare find

OSNEY ISLAND

Oxford City Centre c.0.78 mile Oxford Railway Station c. 0.22 mile

A very attractive package for someone seeking to rent a special 1 bedroom garden flat close to the centre of historic Oxford. Osney Island is a much coveted address on the banks of the River Thames and with the Thames Path providing wonderful walks within the city and out in to rural Oxfordshire. This flat has just been very stylishly refurbished and offers a tranquil double bedroom, a cosy sitting room at the heart of the property, a newly installed fully equipped kitchen / dining space and a bath / shower room. The flat has an atmospheric private sun trap garden. AVAILABLE FROM May 1st 2025. (TOTAL FLOOR SPACE: c.675 sq ft / 62.7 m2)

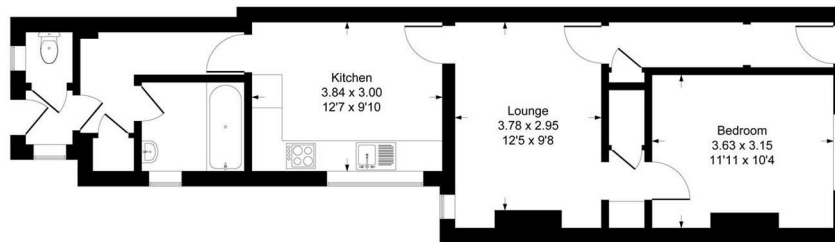
QUOTING RENT: c.£1,800pcm

THE PROPERTY

A VERY SPECIAL STYLISHLY REFURBISHED GARDEN FLAT IN MUCH COVETED OSNEY ISLAND

76 Bridge Street

Approximate Gross Internal Area = 62.7 sq m / 675 sq ft



Ground Floor

Illustration for identification purpose only, measurements approximate, and not to scale.

SITUATION

Contact: Gavin West

(t) 01865 510000 (e) gavin@west-tpc.co.uk

Directions

Leave the A34 ring road at the Botley junction and proceed down the short stretch of dual carriageway to the traffic lights and turn left towards the city centre. Proceed past Waitrose on your left and at the bridge traffic lights proceed directly ahead. Before the River Thames bridge take the right hand turning on to Osney Island in to Bridge Street and the subject property is about half way down the street on your right. WHAT3WORDS Co-Ordinate: [///wicked.spots.villa](https://www.what3words.com/villa)

216 Banbury Road, Oxfordshire, OX2 7BY

Tel: 01865 510000 Email: oxford@west-tpc.co.uk <https://www.west-tpc.co.uk>