



Thatched Cottage
Knighton, SN6 8NT
£2,150 Per Month



Thatched Cottage , Knighton, SN6 8NT

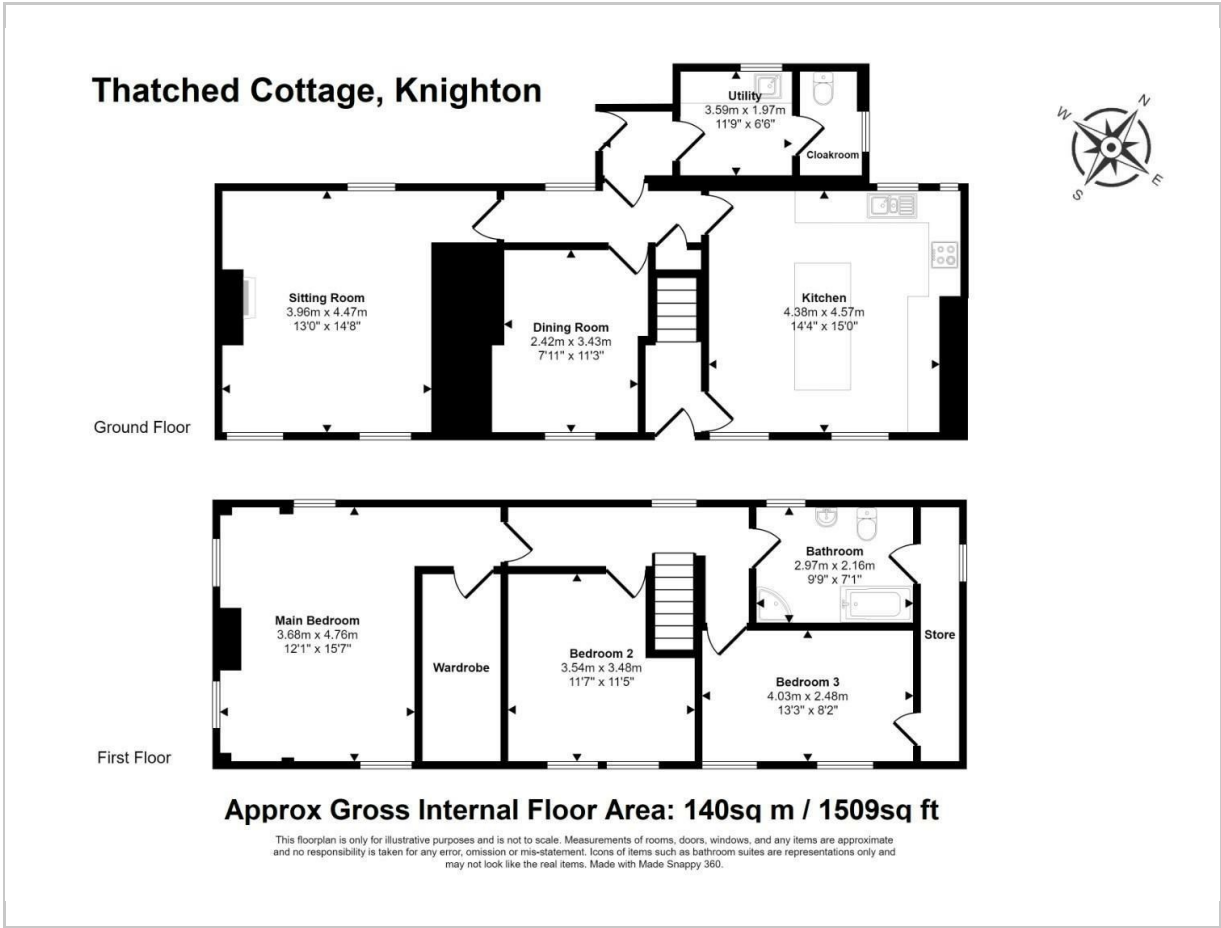
KNIGHTON
Shrivenham c4.9 miles Wantage c7.8 miles Faringdon c6.8 miles Oxford c24.8 miles Witney c19.8 miles

This stunning detached cottage sits in circa 0.3 of an acre in the heart of the tranquil hamlet of Knighton at the foot of The Downs. Within walking distance of the ancient path, The Ridgeway and White Horse Hill, the oldest chalk carving in the kingdom. The cottage offers three good bedrooms, family bathroom, triple aspect sitting room with wood burning stove, dining room, recently refitted kitchen/breakfast room, utility room and cloakroom.

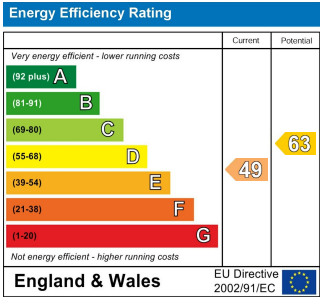
Pretty gardens to front, back and side with garden shed and parking area.

Oil fired central heating.

Floor Plan



- BEAUTIFUL DETACHED COTTAGE
- TRANQUIL SETTING IN c0.3 ACRE
- 3 BEDROOMS
- 2 RECEPTION ROOMS
- REFITTED KITCHEN/BREAKFAST ROOM
- OFF STREET PARKING
- HAMLET WHERE YOU CAN "HEAR A PIN DROP"
- COUNCIL TAX BAND F
- AVAILABLE LATE APRIL 2025
- LONG TERM LET



These particulars, whilst believed to be accurate are set out as a general outline only for guidance and do not constitute any part of an offer or contract. Intending purchasers should not rely on them as statements of representation of fact, but must satisfy themselves by inspection or otherwise as to their accuracy. No person in this firms employment has the authority to make or give any representation or warranty in respect of the property.