

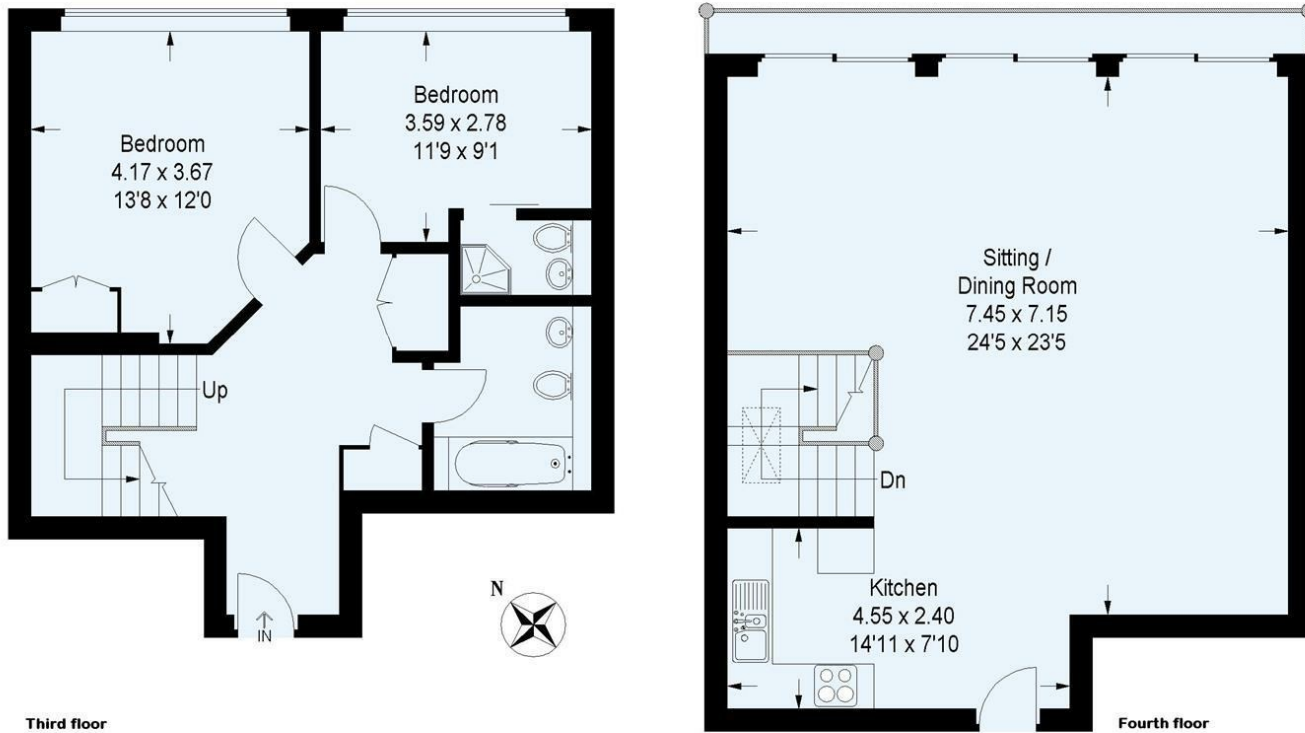


TO LET

27 The Lion Brewery, St Thomas Street, Oxford, OX1 1JE

£2,550 PCM

Approximate Gross Internal Area :-
109 sq m / 1173 sq ft



THE PROPERTY

A DISCREET CITY CENTRE LOCATION: Situated in the prestigious gated Lion Brewery development, a striking duplex apartment.

- Available August 2024
- Duplex accommodation
- Striking steel & glass staircase
- Lift access
- 2 Bedrooms
- Unfurnished
- Impressive 'Social space'
- Fully integrated kitchen
- View over Mill Stream
- 2 Bath / Shower rooms

CENTRAL OXFORD - Oxford Railway Station:
0.25 miles Westgate Oxford c.0.1 miles

The perfect central Oxford location. Peaceful, luxurious and discreet, this apartment is arranged over two floors with an impressive 'social space' full of light and spanning the width of the upper floor. A stunning glass and wood returning staircase connects the upper and lower floors. View to Oxford Castle over the Mill Stream. The apartment benefits from lift access and this is for the exclusive use of just four apartments. A very short walk to the restaurants, bars, (Curzon) cinema and shopping at the renowned Westgate Oxford. There is an allocated undercover parking space with this property. (TOTAL FLOOR AREA c.1173 sq ft / 109 m2)

Council Tax Band F

Directions

From St Giles turn right at the Randolph Hotel into Beaumont Street, continue over the traffic lights onto Hythe Bridge Street, at the traffic lights turn left and go straight over onto Hollybush Row, take the first turning on your left into St Thomas Street and The Lion Brewery is located half way down on the right hand side through its distinctive double wrought iron, golden lion topped, gated entrances.

216 Banbury Road, Oxfordshire, OX2 7BY
Tel: 01865 510000 Email: oxford@west-tpc.co.uk <https://www.west-tpc.co.uk>

Contact: Gavin West
(t) 01865 510000 (e) gavin@west-tpc.co.uk