

west

THE PROPERTY CONSULTANCY



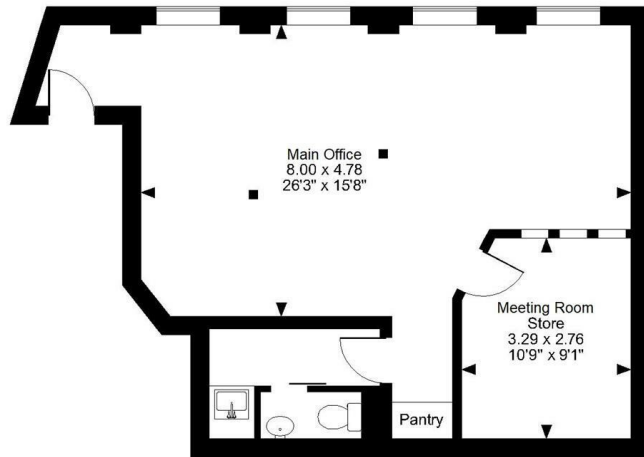
4 The Old Mill, Wantage, OX12 9AB

£7,200 Per Annum

WELL APPOINTED, SPACIOUS CHARACTER OFFICE SET WITHIN THE OLD MILL, A VERY SHORT WALK FROM THE TOWN CENTRE. A smart second floor office in a historic building with private parking space, open plan main office, meeting room, cloakroom and kitchenette. Heating and air conditioning.

Floor Plan

The Old Mill, Mill Street, Wantage
Approximate Gross Internal Area
580 Sq Ft/54 Sq M



Ground Floor

FOR ILLUSTRATIVE PURPOSES ONLY - NOT TO SCALE
The position & size of doors, windows, appliances and other features are approximate only.
© ehouse. Unauthorised reproduction prohibited. Drawing ref. dfg/8484016/DMS

Area Map



Accommodation

- Character Office Space
- Convenient & Peaceful
- Large Open Office
- Store Room
- Cloakroom & Kitchenette
- Private Parking Space
- Outlook over Letcombe Brook
- Heating & Air Conditioning
- Some furnishings available by negotiation

WANTAGE

Wantage Market Place c0.1 mile (2 min walk) Faringdon c9 miles Oxford
c14.8 miles M4 Jct 14 c10.5 miles Newbury c14.7 miles

WELL APPOINTED, SPACIOUS 2nd FLOOR CHARACTER OFFICE SET
WITHIN THE OLD MILL, A VERY SHORT WALK FROM THE TOWN
CENTRE.

Character 2nd floor office with style set in The Old mill with good natural light
and an outlook over Letcombe Brook.

FLOOR AREA c.580 sq ft Gross Internal

3 minute walk from Market Place
Air Conditioning
Large attractive open office area

Viewing

Please contact our Oxford Lettings Office
on 01865 510000 if you wish to arrange a viewing
appointment for this property or require further
information.



These particulars, whilst believed to be accurate are set out as a general outline only for guidance and do not constitute any part of an offer or contract. Intending purchasers should not rely on them as statements of representation of fact, but must satisfy themselves by inspection or otherwise as to their accuracy. No person in this firm's employment has the authority to make or give any representation or warranty in respect of the property.

216 Banbury Road, Oxfordshire, OX2 7BY

Tel: 01865 510000 Email: oxford@west-tpc.co.uk <https://www.west-tpc.co.uk>