

west
THE PROPERTY CONSULTANCY



TO LET

25 Tyndale Road, Cowley, Oxfordshire, OX4 1JL

£2,250 PCM

- NO HMO
- Tax Band E
- Enclosed rear garden
- 2 bathrooms
- Minimum qualifying income £67,500 (combined tenants)
- 4 bedrooms
- Living/dining area
- Available 22nd of May 2024
- Parking for 1 (small) car
- Suitable for professional couple or family

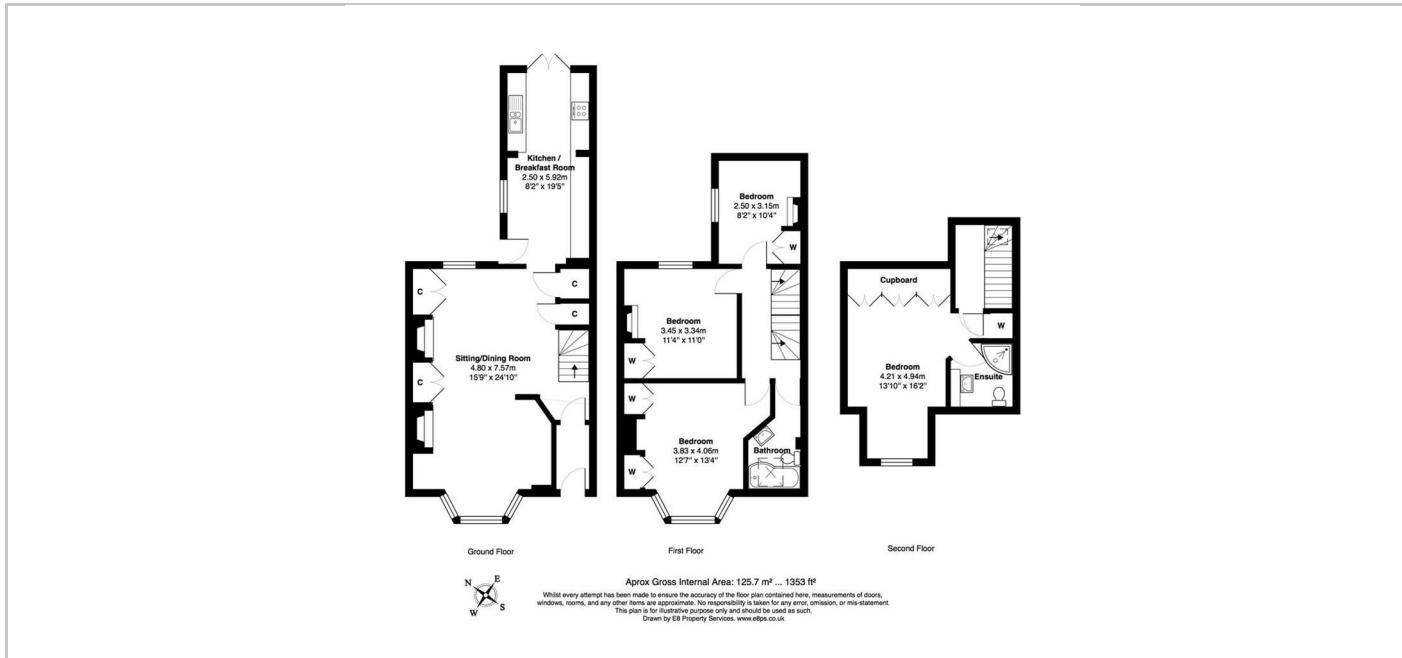
EAST OXFORD
THE PLAIN c.20 METRES, OXFORD TUBE STOP c.10 METRES

On the doorstep of vibrant St Clements and the city centre this spacious 4 bedroom Victorian town house has recently been decorated. Offering flexible accommodation to include, living/dining room, kitchen with French doors to the garden. The first floor offers 3 beds and principal bathroom, second floor offer master bedroom with en-suite shower. Outside the property has an enclosed rear garden and hard standing to the front. (Suitable for professional couple or family)

QUOTING RENT: £2,250pcm

THE PROPERTY

On the doorstep of vibrant St Clements and the city centre this spacious 4 bedroom Victorian town house



SITUATION

Contact: Sam Waddington
(t) 01865 510000
(e) sam@west-tpc.co.uk

Directions

From Oxford City centre proceed along the High street towards The Plain. Take the second exit up the Cowley Road, then take the second turning left in to Tyndale road, the property will be found on your right hand side.