



FRESHFIELDS

Freshfields
Charlbury





**A DISCREETLY LOCATED BESPOKE BUILT HOUSE -
Set in secluded private south facing gardens**

CHARLBURY
Charlbury Station c.1 mile Oxford 15.5 miles

A bespoke built house in a discreet much coveted location with fine views on the edge of Charlbury. This property represents the perfect investment as a second or retirement home, or for a professional seeking a semi-rural base with good access to a rail connection. The house has a contemporary interior with 2 reception rooms including an impressive "social" kitchen space, 3 good bedrooms,

GUIDE PRICE: £695,000

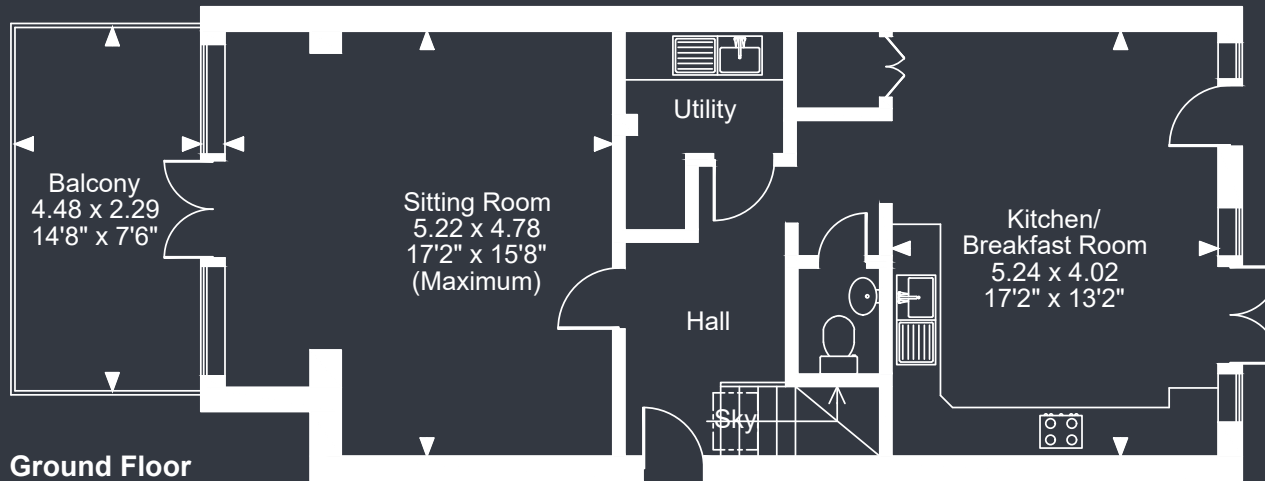
2 baths. Under floor heating. Wonderful open views to the South and the property is gated with extensive parking. Secluded picturesque gardens.

(TOTAL FLOOR AREA: c.1244 sq ft / 116 m2)

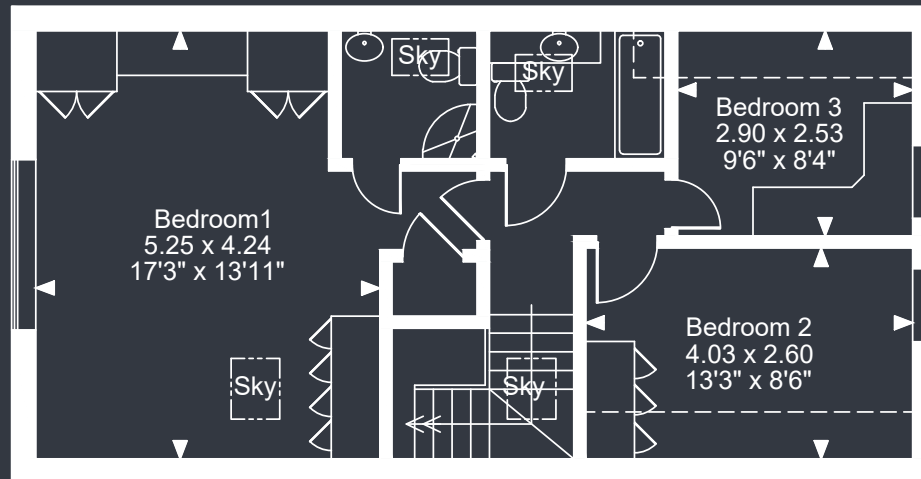
Sam Waddington
(t) 01865 510000 (e) sam@west-tpc.co.uk

DIRECTIONS: Entering Charlbury along the Woodstock Road, proceed to the bottom of the hill where the road bends to the right and Freshfields will be found a short distance along on your left hand side and is distinguishable by its cream five bar gated access, with a mature oak tree to the left of the entrance.

Freshfields, Woodstock Road Charlbury, Chipping Norton, Oxfordshire, OX7 3ER
Approximate Gross Internal Area
1213 Sq Ft/113 Sq M
Balcony external area = 110 Sq Ft/10 Sq M



Ground Floor



First Floor

FOR ILLUSTRATIVE PURPOSES ONLY - NOT TO SCALE

The position & size of doors, windows, appliances and other features are approximate only.

☐☐☐☐ Denotes restricted head height

© ehouse. Unauthorised reproduction prohibited. Drawing ref. dig/8586434/SS



west

THE PROPERTY CONSULTANCY

216 Banbury Road
 Summertown
 Oxford
 OX2 7BY

T: 01865 510000

F: 01865 558877

E: oxford@west-tpc.co.uk

west-tpc.co.uk