

west

THE PROPERTY CONSULTANCY

COMING SOON

Burcot Park, Abingdon, OX14 3DH

£995,000



4



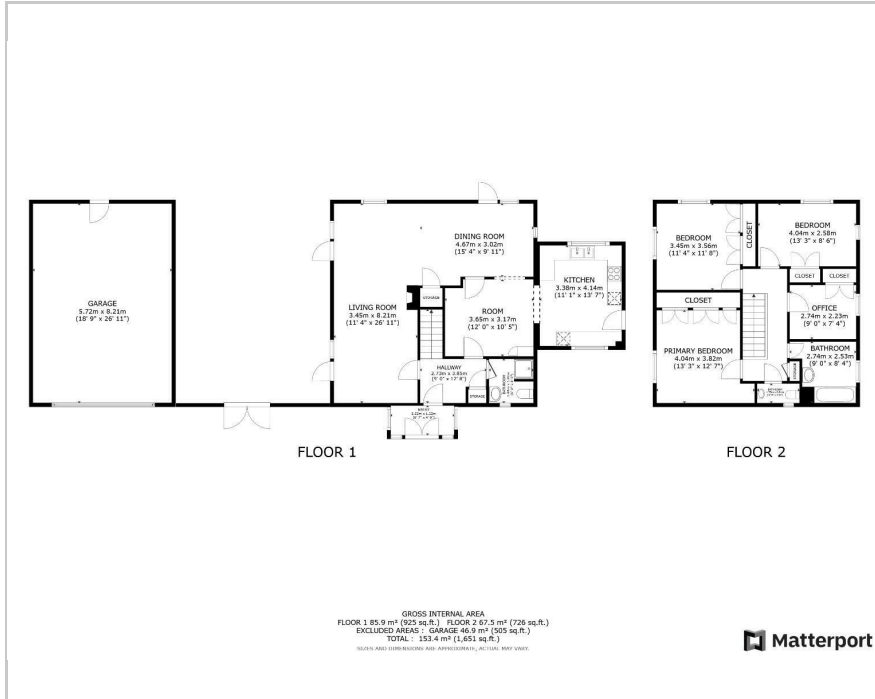
1



2



Floor Plan



Area Map



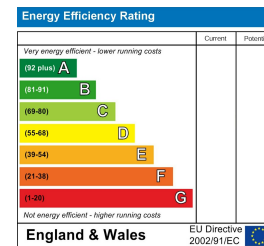
Accommodation

- Westerly facing garden with open views
- Excellent location between Dorchester on Thames and Abingdon on Thames
- Opportunity to extend (subject to planning)
- 0.32 acre development site in a much coveted location
- Good local amenities in Dorchester on Thames
- Excellent village 'gastro' pub
- Didcot Parkway Station under 6 miles distance
- Outline planning consent for two detached houses of c. 3000 sq ft / 279 m²

Viewing

Please contact our Oxford Sales Office on 01865 510000 if you wish to arrange a viewing appointment for this property or require further information.

Energy Efficiency Graph



These particulars, whilst believed to be accurate are set out as a general outline only for guidance and do not constitute any part of an offer or contract. Intending purchasers should not rely on them as statements of representation of fact, but must satisfy themselves by inspection or otherwise as to their accuracy. No person in this firm's employment has the authority to make or give any representation or warranty in respect of the property.