

# west

THE PROPERTY CONSULTANCY



20 Adelaide Street, Oxford, OX2 6EN

Guide Price £535,000



2



2



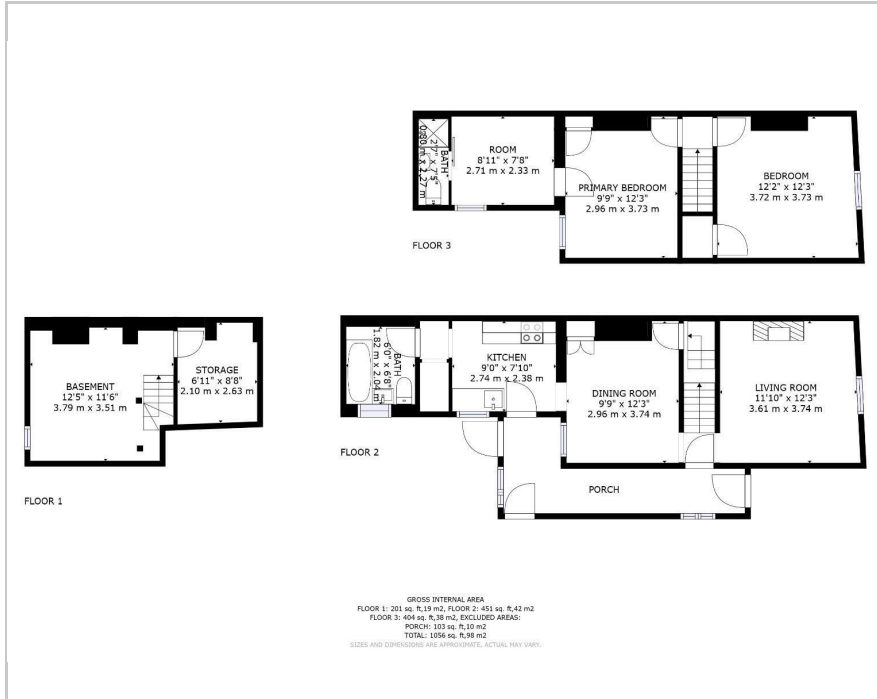
3



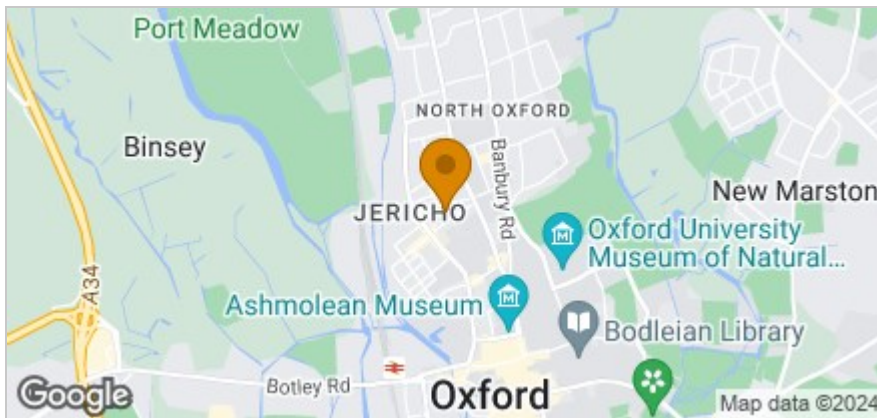
D



## Floor Plan



## Area Map



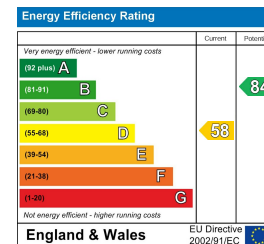
## Accommodation

- A special place to live and a special opportunity
- An end of terrace late 19th Century house
- Walton Manor / Jericho borders
- The ancient Port Meadow close at hand for a wonderful Thames side walk
- Short walk to the restaurants and bars of Jericho
- Perfect 'down-sizing' opportunity or 'lock up & leave' house
- 2 Reception rooms
- 2 Bedrooms
- 2 Bath / shower rooms
- City Centre only half a mile distance

## Viewing

Please contact our Oxford Sales Office on 01865 510000 if you wish to arrange a viewing appointment for this property or require further information.

## Energy Efficiency Graph



These particulars, whilst believed to be accurate are set out as a general outline only for guidance and do not constitute any part of an offer or contract. Intending purchasers should not rely on them as statements of representation of fact, but must satisfy themselves by inspection or otherwise as to their accuracy. No person in this firm's employment has the authority to make or give any representation or warranty in respect of the property.

216 Banbury Road, Oxfordshire, OX2 7BY

Tel: 01865 510000 Email: oxford@west-tpc.co.uk <https://www.west-tpc.co.uk>