



Queens Court, Ellesmere Road, KT13 0HX

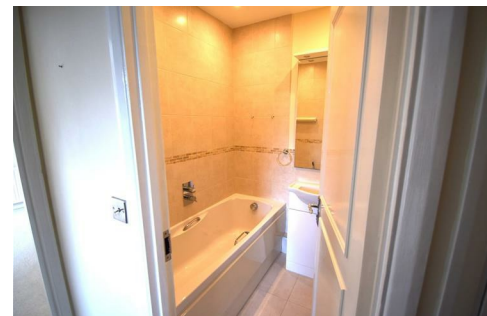




Large 2 bedroom 1st floor flat boasting modern fitted kitchen with Integrated dishwasher, washing machine, microwave 5 ring gas hob with electric oven below and a range of wall and base units.

The property also benefits from an ensuite to the master bedroom as well as a 2nd bathroom, private parking space and garage.

Approached via security entrance gates this property is available to view immediately.





EPC Rating: 69 C



Grants Homes 60 Church Street, Weybridge, Surrey, KT13 8DL
T: 01932 841020 E: lettings@grantshomes.co.uk

