

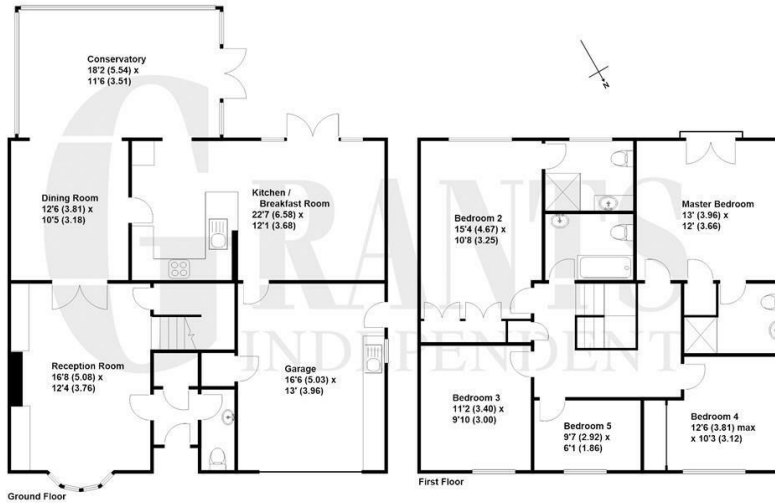


Churchill Drive, Weybridge, KT13 9HE



A bright and spacious five bedroom detached family home located in a quiet residential cul de sac within easy reach of Weybridge town centre and Oatlands village. This modern home offers a good sized living room, leading to a dining room, conservatory, and large kitchen/reception room. Upstairs, there are five bedrooms and two bedrooms have ensuite bathrooms. Also has driveway parking and an integral garage. Offered unfurnished.





Approximate Gross Internal Floor Area - 2147 sq/ft - 199.6 sq/mtr

Grants Independent has prepared these sales particulars for general guidance purposes only. They do not form or constitute any part of an offer or contract. The services, systems and appliances listed in these details have not been tested by us, and no guarantee is given to their operational ability or efficiency. Lease details, service charges and ground rent are given as a guide and should be checked by your solicitor prior to exchange of contracts. These plans are not drawn to scale and are for representational purposes only. Created by www.viewonlinetips.co.uk



EPC Rating: 67 D





Grants Homes 60 Church Street, Weybridge, Surrey, KT13 8DL
T: 01932 841020 E: lettings@grantshomes.co.uk

