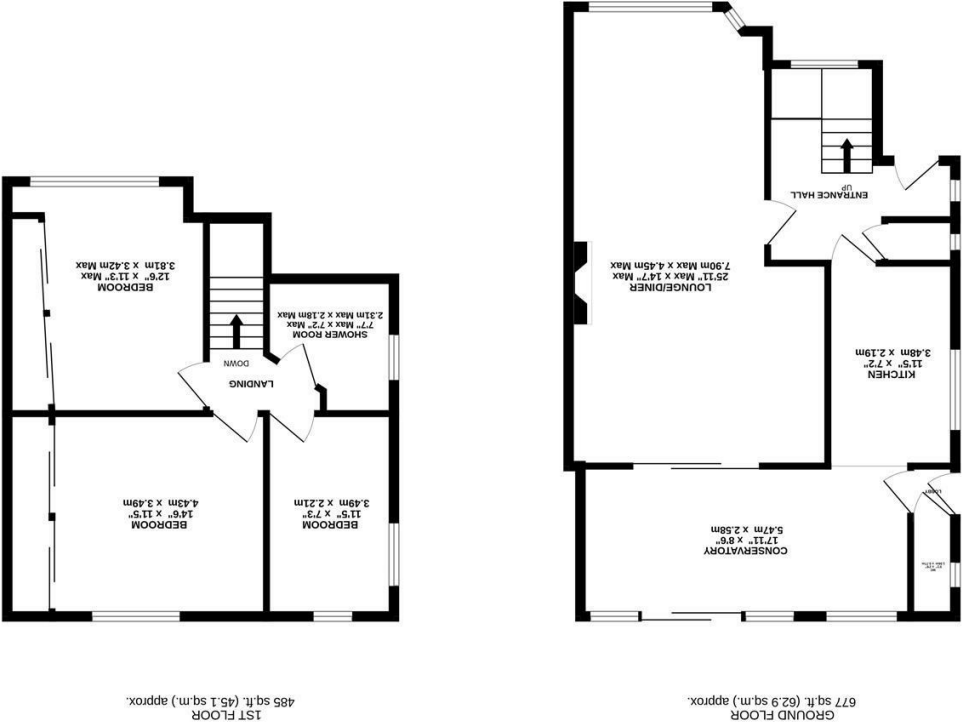


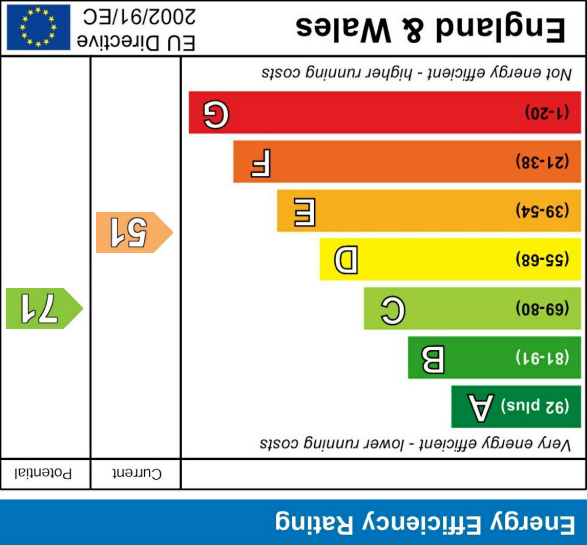
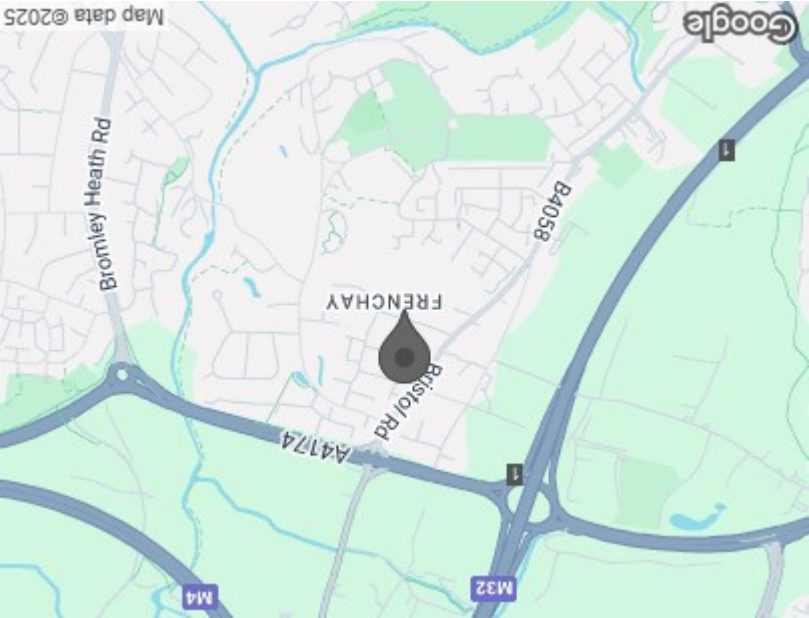


FLOOR PLAN



Whilst every attempt has been made to ensure the accuracy of the floorplan contained here, measurements of doors, windows, rooms and any other items are approximate and no responsibility is taken for any error, omission or misstatement. This plan is for information purposes only and should be used as such by any prospective purchaser. The services, systems and appliances shown have not been tested and no guarantee as to their operability or efficiency can be given.
Made with Metropix ©2025

AREA MAP



These particulars, whilst believed to be accurate are set out as a general outline only for guidance and do not constitute any part of an offer or contract. Intending purchasers should not rely on them as statements of representation of fact, but must satisfy themselves by inspection or otherwise as to their accuracy. No person in this firms employment has the authority to make or give any representation or warranty in respect of the property.



MALMAINS DRIVE

FRENCHAY, BRISTOL, BS16 1PQ

£525,000



3



1



2



E



Ground Floor

Entrance Hall

Lounge/Dining Room

25'11" x 13'1", 147'7"

Kitchen

11'5" x 7'2"

Conservatory

17'11" x 8'5"

WC

First Floor

Landing

Bedroom One

14'6" x 11'5"

Bedroom Two

12'5" x 11'2"

Bedroom Three

11'5" x 7'3"

Shower Room

7'6" x 7'1"

Outside

Front Garden

Rear Garden

Garage & Off Street Parking



M Coleman Estate Agents are delighted to bring to the market this spacious three-bedroom semi-detached home, perfectly positioned within the sought-after village of Frenchay. The property offers well-proportioned accommodation with wonderful scope for purchasers to enhance and style to their own taste.

The ground floor is arranged to provide a generous Lounge/Dining Room featuring a tiled hearth with wooden surround and gas fire, together with sliding doors opening into a part-glazed Conservatory enjoying lovely views across the rear garden. The galley-style kitchen is fitted with a range of wall and base units with space for a freestanding cooker and further appliances, and also benefits from direct access to the Conservatory. Completing the ground floor is a Cloakroom and a useful side entrance.

A feature window floods the staircase and landing with natural light, creating a bright and welcoming approach to the first floor. There are three bedrooms, all with fitted wardrobes; the principal bedroom is a particularly spacious, light-filled room overlooking the garden, while the second is another good double to the front elevation. The third enjoys a dual aspect with windows to the side and rear. The family shower room is fitted with a shower cubicle, WC and wash hand basin.

Externally, the property boasts a substantial rear garden which will appeal to both families and keen gardeners. Predominantly laid to lawn with mature trees, it also offers a paved patio—ideal for outdoor dining and entertaining. To the front, a driveway provides off-road parking for several vehicles and access to a detached single garage.

The location is superb, with easy access to the motorway network and Parkway Station for commuters, whilst Frenchay Common and the River Frome provide delightful open spaces and scenic walks just moments away.

This property is offered for sale with no onward chain.

