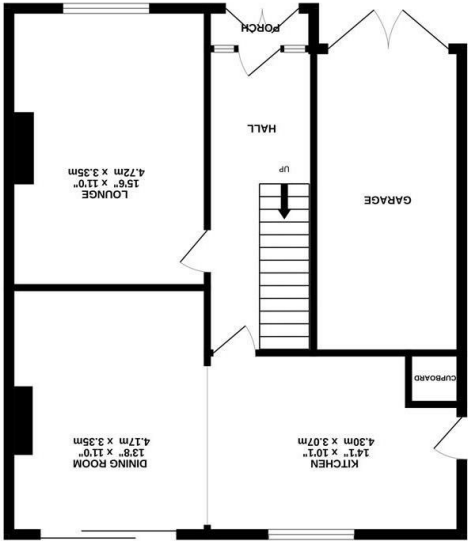
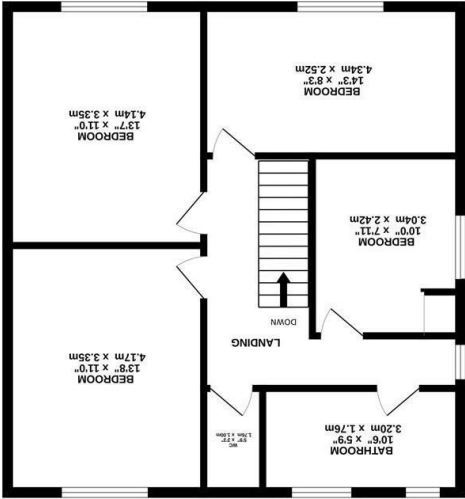




FLOOR PLAN



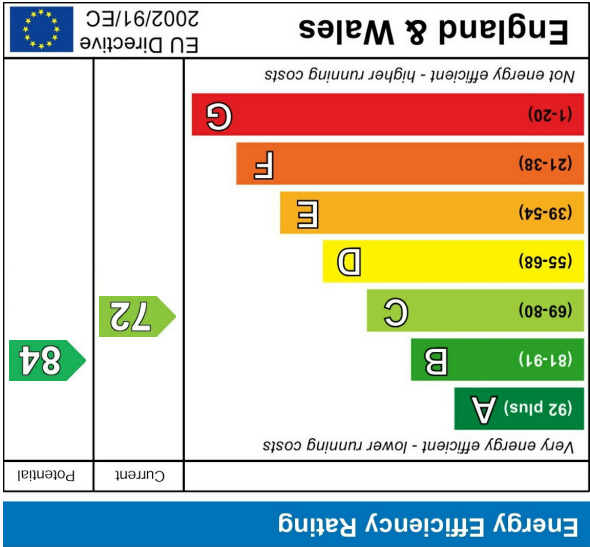
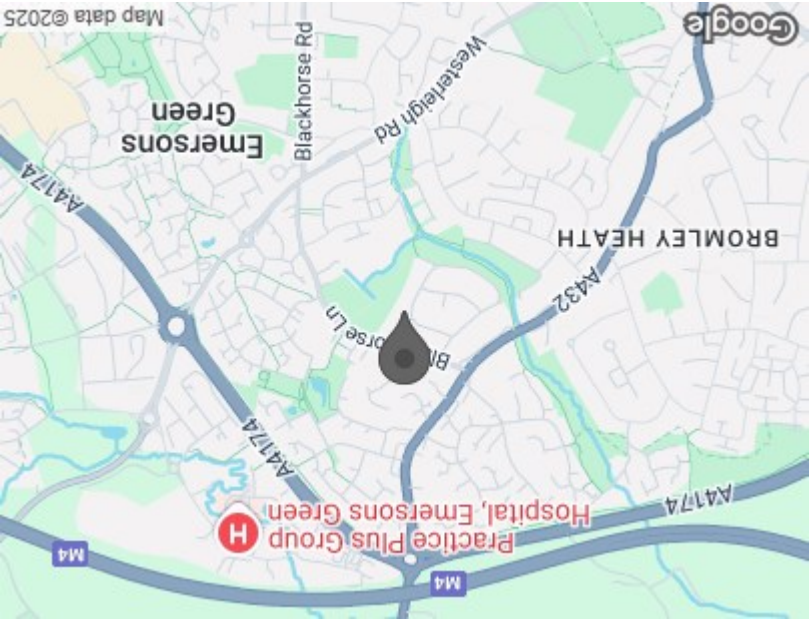
GROUND FLOOR
705 sq.ft. (65.5 sq.m.) approx.



1ST FLOOR
675 sq.ft. (62.8 sq.m.) approx.

TOTAL FLOOR AREA: 1381 sq.ft. (128.3 sq.m.) approx.
Whilst every attempt has been made to ensure the accuracy of the floorplan contained here, measurements of doors, windows, rooms and other items are approximate and no responsibility is taken for any omission or mis-statement. This plan is for illustrative purposes only and should be used as such by any prospective purchaser. The services, systems and appliances shown have not been tested and no guarantee as to their operability or efficiency can be given.
Made with Metropix ©2023

AREA MAP



These particulars, whilst believed to be accurate are set out as a general outline only for guidance and do not constitute any part of an offer or contract. Intending purchasers should not rely on them as statements of representation of fact, but must satisfy themselves by inspection or otherwise as to their accuracy. No person in this firm employment has the authority to make or give any representation or warranty in respect of the property.



LEAP VALLEY CRESCENT
DOWNEND, BRISTOL, BS16 6TQ
ASKING PRICE £525,000





GROUND FLOOR

Porch

Hall

Lounge
15'6 x 11'

Dining Area
13'8 x 11

Kitchen
14'1 x 10'1

Rear Porch

Garage

FIRST FLOOR

Landing

Bedroom
13'8 x 11'

Bedroom
13'7 x 11'

Bedroom
14'3 x 8'3

Bedroom
10' x 7'11

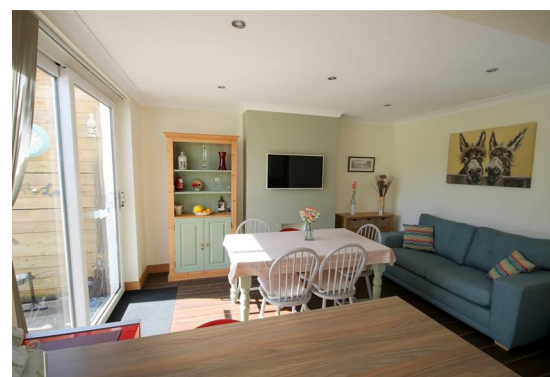
Bathroom
10'6 x 5'9

WC

OUTSIDE

Rear Garden

Drive



M.Coleman Estate Agents are delighted to offer for sale this fabulous four-bedroom semi-detached property.

The entrance porch leads to a spacious hallway that gives an immediate impression of the space that continues throughout. Positioned to the front of the property is a charming lounge whilst extending across the rear of the property is the open plan kitchen dining room.

Thoughtfully designed and following simple clean lines the kitchen has a range of wall and base units offering copious storage. Finished with cream high gloss doors and brushed steel handles, the contemporary feel is further enhanced by squared edged wood effect worktops and metro tiled splashbacks. Integrated appliances include an induction hob, double oven, extractor and dishwasher plus space for an American style fridge freezer. The dining area has patio doors opening onto the garden and there is also a door leading from the kitchen to a side porch which offers access to both the front and rear gardens plus a cupboard with space and plumbing for a washing machine and tumble dryer.

The first-floor accommodation benefits from a spacious landing leading to four lovely bedrooms, three are well proportioned doubles; the fourth is being used by the current owners as a study. The sleek family bathroom is fully tiled and has a modern white four piece suite including a separate mains plumbed shower cubicle. A rainfall style shower head adds a luxurious touch whilst two obscured double-glazed windows flood the room with light. There is also a separate cloakroom accessed from the landing which completes the accommodation on this floor.

The rear garden is certainly one of this property's key assets, large enough for even the most energetic of children it is predominantly laid to lawn with two seating areas. There is also a large storage shed which benefits from power and lighting. To the front is a block-work drive offering off road parking for several vehicles and access to the integral single garage.

