



## Porcupine Close

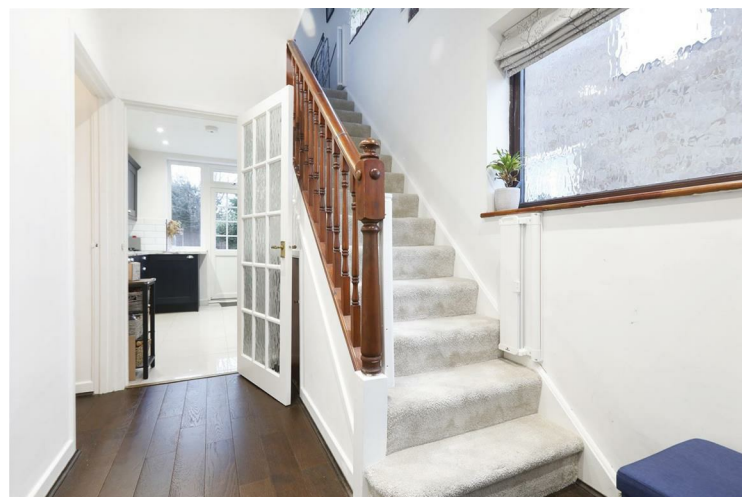
£585,000

FREEHOLD

Leonard Leese are pleased to market this lovingly presented three-bedroom semi-detached house in Porcupine Close, providing a private driveway and recently renovated garage/office space.

The property has recently benefitted from a new modern kitchen & family bathroom completed to a high standard. The main reception room is bright and welcoming, leading to a separate dining area. The garden is very spacious and has tonnes of potential!

Call the sales department to reserve a viewing 0207 015 1360.

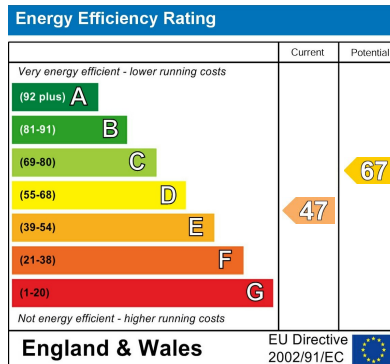


Porcupine Close,  
Mottingham, SE9



Approx Gross Internal Area 985 Sq Ft - 91.51 Sq M  
Approx Floor Area Including Office 1034 Sq Ft - 96.06 Sq M

This floor plan should be used as a general outline for guidance only. Any intending purchaser or lessee should satisfy themselves by inspection, searches, enquiries and full survey as to the correctness of each statement. Any areas, measurements or distances quoted are approximate and should not be used to value a property or be the basis of any sale or let.



Agents Note: Whilst every care has been taken to prepare these particulars, they are for guidance purposes only. All measurements are approximate and are for general guidance purposes only and whilst every care has been taken to ensure their accuracy, they should not be relied upon and potential buyers/tenants are advised to recheck the measurements

**Borough Sales**  
230 Borough High Street  
London  
SE1 1JX

020 7015 1360  
enquiries@leonardleese.com  
www.leonardleese.com

