



Flat 4, 7 Sudrey Street London

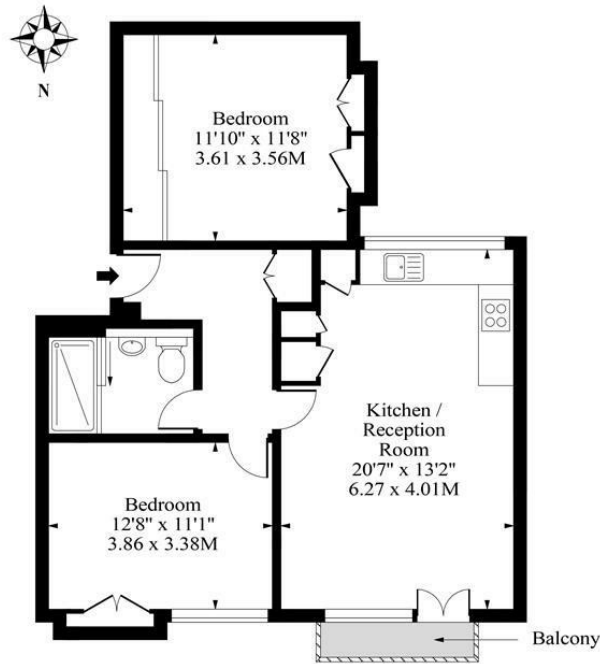
£625,000
LEASEHOLD

A spacious and superb two double bedroom, second floor modern apartment with high specification throughout and with the addition of a private balcony. Positioned perfectly between an array of great amenities and transport links - the property is minutes away from Borough/London Bridge tube stations and the ever popular Borough Market.

Call the Sales Department to reserve a viewing 0207 015 1360.



Sudrey Street, London, SE1



Second Floor

Approx Gross Internal Area 690 Sq Ft - 64.10 Sq M

Measured in accordance with RICS guidelines. Every attempt is made to ensure accuracy
 However all measurements are approximate.
 The floor plan is illustrative purposes only and is not to scale



Energy Efficiency Rating		
	Current	Potential
Very energy efficient - lower running costs		
(92 plus) A		
(81-91) B	83	83
(69-80) C		
(55-68) D		
(39-54) E		
(21-38) F		
(1-20) G		
Not energy efficient - higher running costs		
England & Wales	EU Directive 2002/91/EC	

Agents Note: Whilst every care has been taken to prepare these particulars, they are for guidance purposes only. All measurements are approximate and are for general guidance purposes only and whilst every care has been taken to ensure their accuracy, they should not be relied upon and potential buyers/tenants are advised to recheck the measurements

Borough Sales
 230 Borough High Street
 London
 SE1 1JX

020 7015 1360
 enquiries@leonardleese.com
 www.leonardleese.com

